



Apple TV/Video System

User's Guide



Apple TV/Video System

User's Guide

Apple Computer, Inc.

© 1995 Apple Computer, Inc. All rights reserved.

Under the copyright laws, this manual may not be copied, in whole or in part, without the written consent of Apple. Your rights to the software are governed by the accompanying software license agreement.

The Apple logo is a trademark of Apple Computer, Inc., registered in the U.S. and other countries. Use of the “keyboard” Apple logo (Option-Shift-K) for commercial purposes without the prior written consent of Apple may constitute trademark infringement and unfair competition in violation of federal and state laws.

Every effort has been made to ensure that the information in this manual is accurate. Apple is not responsible for printing or clerical errors.

Apple Computer, Inc.

1 Infinite Loop

Cupertino, CA 95014-2084

(408) 996-1010

Apple, the Apple logo, LaserWriter, Macintosh, and QuickTime are trademarks of Apple Computer, Inc., registered in the U.S. and other countries.

Adobe, Adobe Illustrator, Adobe Photoshop, and PostScript are trademarks of Adobe Systems Incorporated, which may be registered in certain jurisdictions.

ExposurePro is a registered trademark of Baseline Publishing, Inc.

Helvetica is a registered trademark of Linotype Company.

QuarkXPress is a registered trademark of Quark, Inc.

SuperPaint is a trademark of Aldus Corporation, a subsidiary of Adobe Systems Incorporated, which may be registered in certain jurisdictions.

Tektronix is a registered trademark of Tektronix, Inc.

Simultaneously published in the United States and Canada.

Mention of third-party products is for informational purposes only and constitutes neither an endorsement nor a recommendation. Apple assumes no responsibility with regard to the performance or use of these products.

C O N T E N T S

.....

Important safety information v

Communications regulation information vii

Preface ix

1 Installing Cards and Software 1

What you should have 2

Installing the video input and TV tuner cards in a
compact computer 3

Installing the video input and TV tuner cards in a
modular computer 21

Installing the software 32

Connecting video equipment 33

Where to go from here 40

2 Watching Video 41

Opening Apple Video Player 42

Changing the video source 43

Changing TV channels 44

Adjusting the sound 45

Adjusting the picture 48

Getting help 49

3 Customizing the TV Tuner Settings 51

Programming channels 52

Giving names to channels 56

Locking and unlocking channels 58

Creating and changing a password 59

Setting and editing TV reminders 63

Setting a hot key 66

4 Capturing Video Images 67

Capturing individual images 68

Capturing movies 70

5 Other Special Features 73

Setting the closed caption and video text options 74

Changing the video window size 75

Changing the window color 77

Setting the video input standard 78

6 Using the Remote Control 79

Controlling your TV 80

Controlling your CD-ROM player 81

Setting preferences 82

7 Troubleshooting 83

Index 87

Important safety information

The following guidelines are provided in accordance with the National Electrical Code (NEC).

Important Please read and observe these safety instructions and the other safety information in this manual and those that come with other Apple products.

Grounding plug

Your computer is equipped with a three-wire grounding plug, a plug having a third (grounding) pin. This plug will only fit into a grounding power outlet. This is a safety feature. If you are unable to insert the plug into the outlet, contact your electrician to replace your obsolete outlet. Do not defeat the safety purpose of the grounding plug.

Outdoor antenna grounding

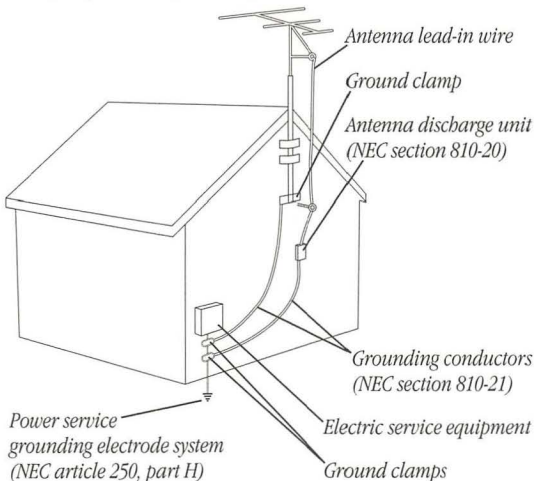
If an outside antenna or cable system is connected to the product, be sure the antenna or cable system is grounded so as to provide some protection against voltage surges and built-up static charges. Article 810 of the National Electrical Code, ANSI/NFPA 70, provides information about proper grounding of the mast and supporting structure, grounding of the lead-in wire to the antenna discharge unit, size of grounding conductors, location of the antenna discharge unit, connection to grounding electrodes, and requirements for the grounding electrode. See the National Electrical Code illustration in the following section.

Power lines

An outside antenna system should not be located in the vicinity of overhead power lines or other electric light or power circuits, or where it can fall into such power lines or circuits.

Warning When installing an outside antenna system, extreme care should be taken to avoid touching such power lines or circuits, as contact with them might be fatal.

Example of antenna grounding:



Notice to cable TV system installer

See section 820-40 of the NEC, which provides guidelines for proper grounding and, in particular, specifies that the cable ground be connected to the grounding system of the building, as close to the point of cable entry as practical.

Communications regulation information

FCC statement

This equipment has been tested and found to comply with the limits for a Class B digital device in accordance with the specifications in Part 15 of FCC rules. See instructions if interference to radio or television reception is suspected.

Radio and television interference

The equipment described in this manual generates, uses, and can radiate radio-frequency energy. If it is not installed and used properly—that is, in strict accordance with Apple's instructions—it may cause interference with radio and television reception.

This equipment has been tested and found to comply with the limits for a Class B digital device in accordance with the specifications in Part 15 of FCC rules. These specifications are designed to provide reasonable protection against such interference in a residential installation. However, there is no guarantee that interference will not occur in a particular installation.

You can determine whether your computer system is causing interference by turning it off. If the interference stops, it was probably caused by the computer or one of the peripheral devices.

If your computer system does cause interference to radio or television reception, try to correct the interference by using one or more of the following measures:

- Turn the television or radio antenna until the interference stops.
- Move the computer to one side or the other of the television or radio.
- Move the computer farther away from the television or radio.
- Plug the computer into an outlet that is on a different circuit from the television or radio. (That is, make certain the computer and the television or radio are on circuits controlled by different circuit breakers or fuses.)

If necessary, consult the service and support information that came with your computer for instructions on how to contact an Apple-authorized service provider or Apple for assistance. Or, contact an experienced radio/television technician for additional suggestions. You may find helpful the following booklet, prepared by the Federal Communications Commission: *Interference Handbook* (stock number 004-000-00345-4). This booklet is available from the U.S. Government Printing Office, Washington, DC 20402.

Important Changes or modifications to this product not authorized by Apple Computer, Inc., could void the FCC Certification and negate your authority to operate the product.

This product was tested for FCC compliance under conditions that included the use of shielded cables and connectors between system components. It is important that you use shielded cables and connectors to reduce the possibility of causing interference to radios, television sets, and other electronic devices. For Apple peripheral devices, you can obtain the proper shielded cables wherever Apple products are sold. For non-Apple peripheral devices, contact the manufacturer or dealer for assistance.

DOC statement

DOC Class B Compliance This digital apparatus does not exceed the Class B limits for radio noise emissions from digital apparatus set out in the radio interference regulations of the Canadian Department of Communications.

Observation des normes—Classe B Le présent appareil numérique n'émet pas de bruits radioélectriques dépassant les limites applicables aux appareils numériques de la Classe B prescrites dans les règlements sur le brouillage radioélectrique édictés par le Ministère des Communications du Canada.

VCCI statement

情報処理装置等電波障害自主規制について

この装置は、第二種情報装置（住宅地域又はその隣接した地域において使用されるべき情報装置）で住宅地域での電波障害防止を目的とした情報処理装置等電波障害自主規制協議会（VCCI）基準に適合しております。

しかし、本装置をラジオ、テレビジョン受信機に近接してご使用になると、受信障害の原因となることがあります。

取扱説明書に従って正しい取り扱いをしてください。

P R E F A C E

.....

This manual tells you how to install and use the hardware and software that are part of the Apple TV/Video System so that you can

- view video and TV on your computer
- capture a single image or a series of images on disk
- determine which channels you receive
- set up a password to restrict access to one or more channels
- take advantage of available closed captions, video text, and Second Audio Program (SAP) when you're watching TV on your computer
- manipulate basic TV features with the included remote control
- quickly switch between watching TV or video and using your computer programs

Installing Cards and Software

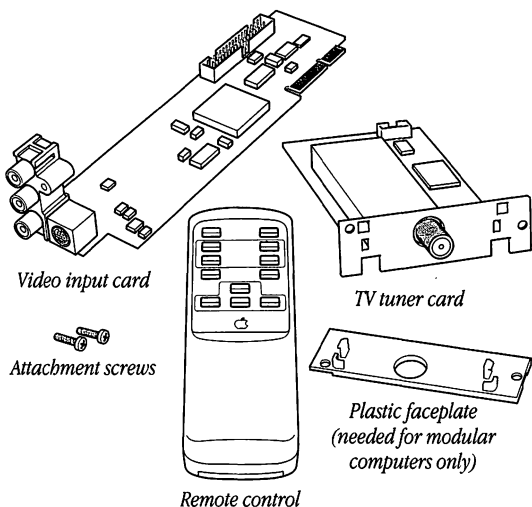
This chapter explains how to install the cards and software you need to watch video and TV on your computer. You'll find information on how to

- install the video input card
- install the TV tuner card
- install the Apple Video Player application program, which you use to watch video and TV
- attach video equipment to the video input card

If you purchased your computer with the video input card, TV tuner card, and software already installed, skip ahead to the last section in this chapter, "Where to Go From Here."

What you should have

Check your package to make sure you have everything you see here.



Note: Your remote control may look different from the one shown here.

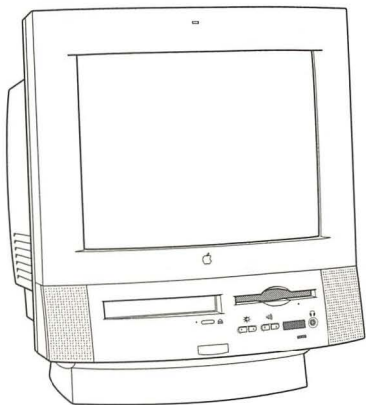
To install the video input and TV tuner cards, attach them to the computer and connect them to your video equipment.

Important The TV tuner card will not work if you do not have the video input card installed. Install the video input card even if you do not intend to connect any video equipment to it.

The steps for attaching the cards to the computer vary slightly depending on whether or not the computer has a built-in monitor.

Installing the video input and TV tuner cards in a compact computer

If your system has a built-in monitor, like this one, continue with the steps below. Otherwise, go to the section that follows, “Installing the Video Input and TV Tuner Cards in a Modular Computer.”



To install the video input and TV tuner cards in a computer with a built-in monitor, follow these steps:

Removing the logic board

- 1 Press the Power key on the keyboard to shut down your computer.

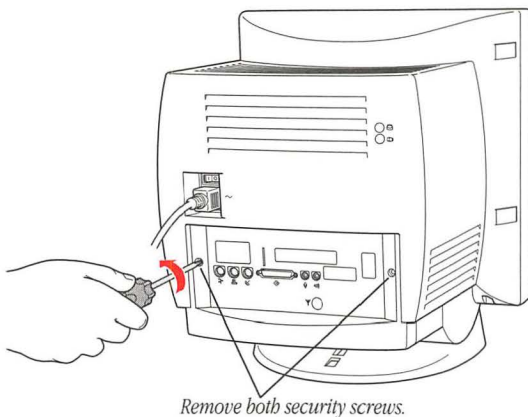
You can also choose Shut Down from the Special menu.

- 2 Unplug all the cables except the power cord from your computer.

Leaving the power cord plugged in helps protect the computer from electrostatic discharge damage.

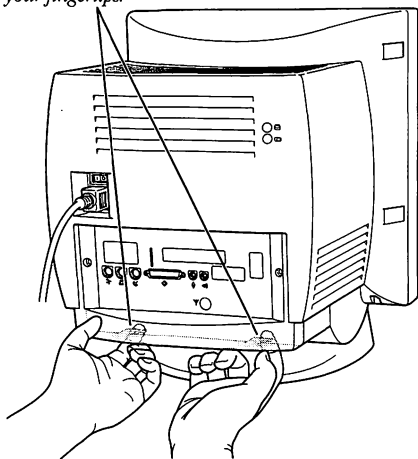
Important To avoid generating static electricity that may damage components, do not walk around the room until you have completed the installation of the card and closed the computer. Additionally, move the logic board as little as possible while it is outside the computer.

- 3 Use a Phillips screwdriver to remove the two security screws from the back panel.



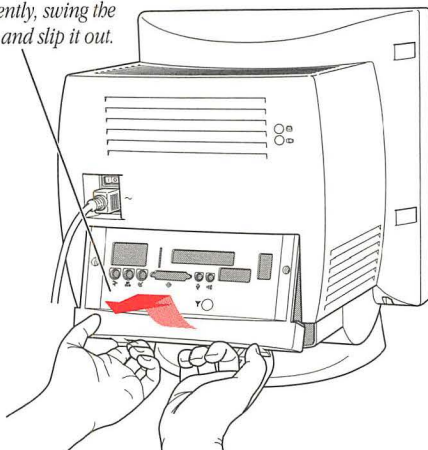
- 4 Locate the two latches on the underside of the computer's case with your fingertips.

Locate the two latches on the underside of the computer's case with your fingertips.



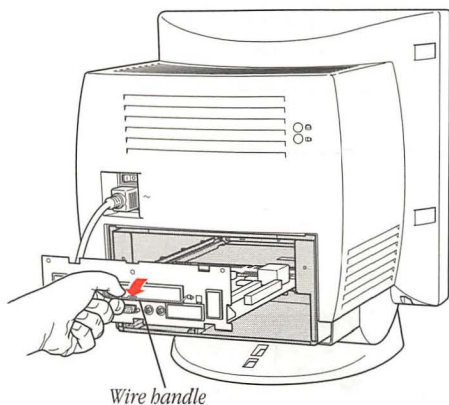
- 5** Pulling gently, swing the panel up and slip it out.

Pulling gently, swing the panel up and slip it out.



Remember: Don't walk around the room until you have finished installing the card and closed the computer. Move the logic board as little as possible while it's outside the computer.

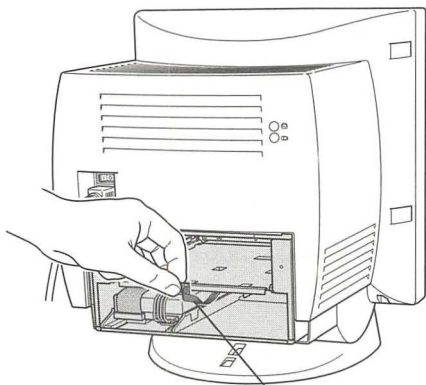
- 6** There is a wire handle on the back of the logic board. Swing it down and use it to pull the logic board toward you.



The logic board is plugged in to a slot inside the computer, so you may have to brace the computer with your other hand and pull firmly at first. Slide the entire logic board all the way out of the computer.

Installing the TV tuner card

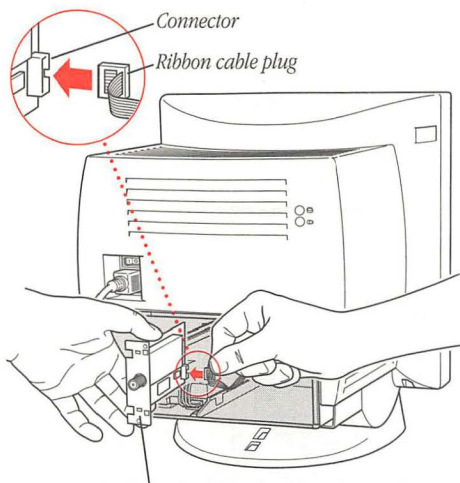
- 1 There is a ribbon cable inside the computer, held in place under the logic board tray, at the bottom of the chassis. Pull the cable gently a short way out of the opening.



If the ribbon cable is taped down on the inside of the computer, remove the tape and gently pull the ribbon cable a short way out of the opening so that you can attach it to the card.

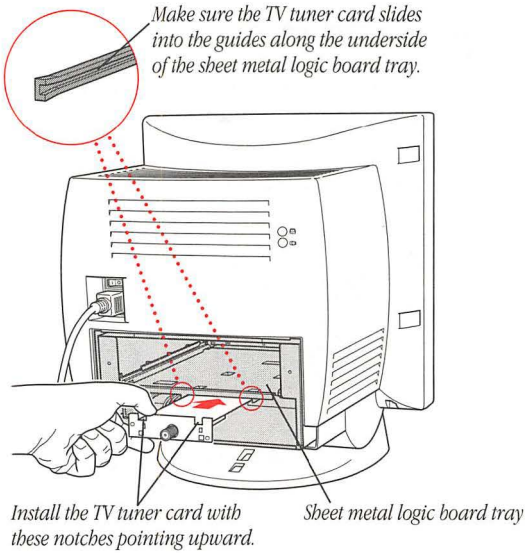
- 2 Remove the TV tuner card from its static-proof bag. Hold the card by its edges to avoid touching the connectors.

- 3** Attach the plug on the ribbon cable to the connector on the TV tuner card.

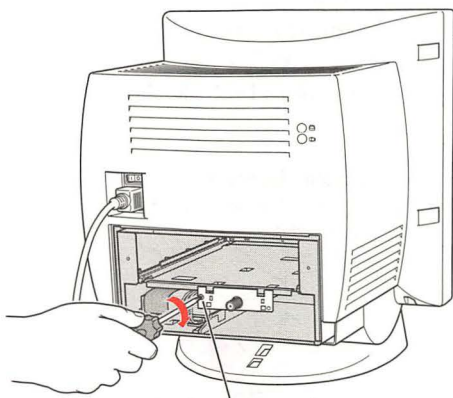


Note: The plastic faceplate should not be attached to the TV tuner when the TV tuner is installed in this type of computer.

- 4** Slide the TV tuner card into place under the logic board tray. Fit the edges of the card into both of the guides there, making sure the notches on the card point upward.



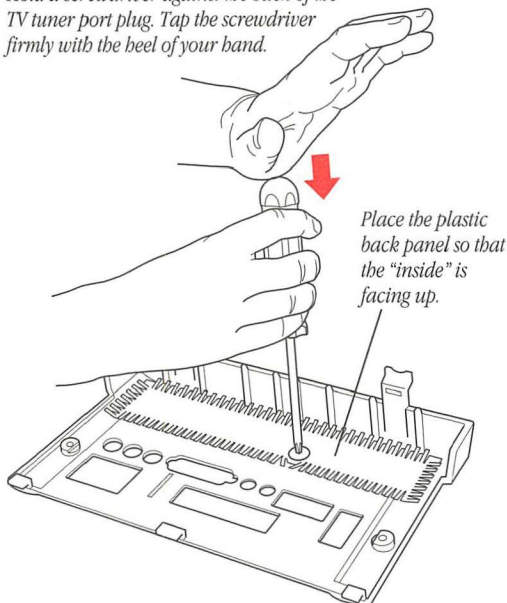
- 5** With a Phillips screwdriver, insert and gently tighten one of the provided attachment screws in the hole at the upper left of the card to secure it.



Install a single screw here to secure the TV tuner card in the computer.

- 6** Punch out the TV tuner port plug on the back panel of the computer. Place the panel, exterior side down, on a surface that won't scratch it (like carpet), and that won't be damaged when pressure is applied to it (do not place on glass, tile, or other fragile or easily marred surfaces). Then hold a screwdriver against the back of the plug and tap the screwdriver firmly, but not too hard, with the heel of your hand.

Hold a screwdriver against the back of the TV tuner port plug. Tap the screwdriver firmly with the heel of your hand.

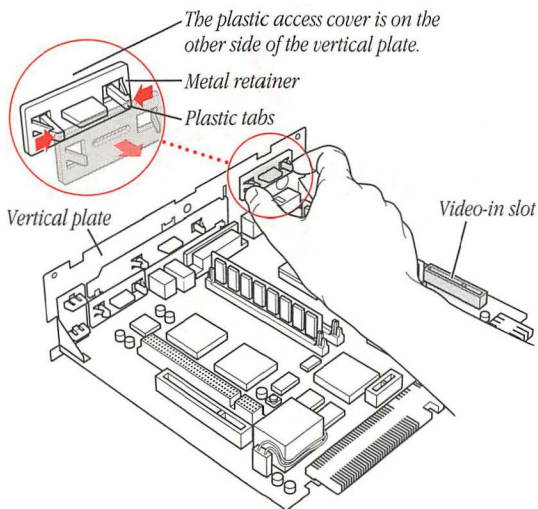


Note: You don't have to use excessive force. You want to snap one or two of the plastic "runners" holding the port plug in place so you can then remove the port plug with your fingers.

- 7** If the plug has been loosened but not quite punched out, you should be able to remove it by pressing with your thumb.

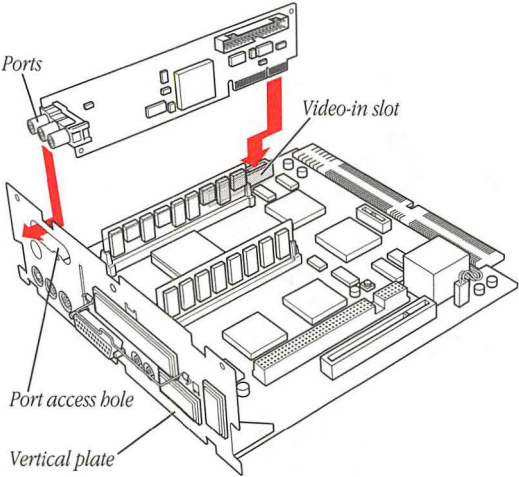
Installing the video input card

- 1 Locate the video-in access cover on one side of the vertical plate attached to the logic board. Remove the cover from its opening by squeezing together the plastic tabs that hold it in place.

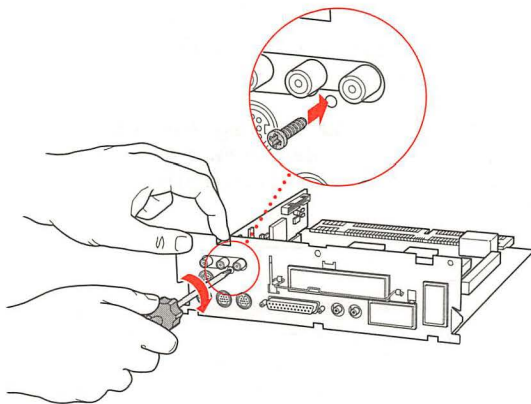


- 2 Remove the video input card from its static-proof bag. Hold the card by its edges to avoid touching the connectors.

- 3** Plug the video input card into the video-in slot on the logic board, fitting the three ports on the card into the port access hole you uncovered in the previous step. Make sure the card is firmly seated in the slot.

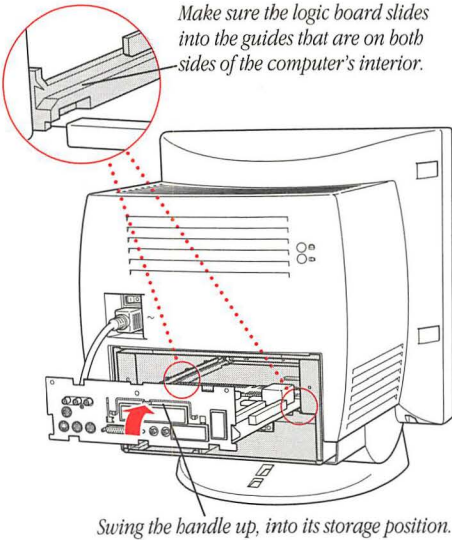


- 4** Screw the card to the vertical plate on the logic board. (Use the other attachment screw.)

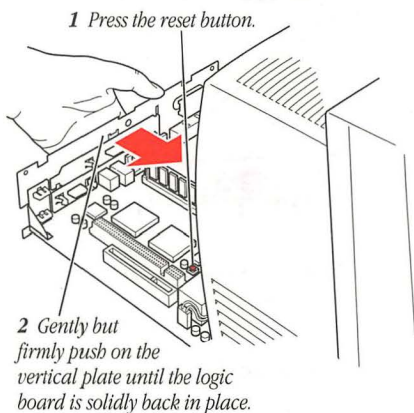


Replacing the logic board

- 1 Swing the wire handle on the logic board back up into its storage position, securing it under its catch. Then fit the logic board into the guide rails on both sides of the computer's interior.

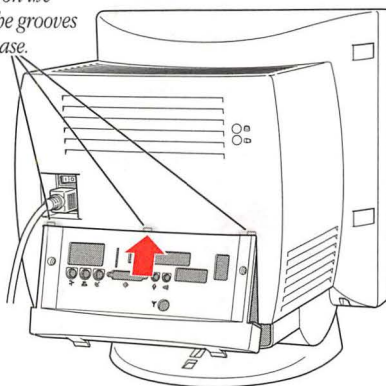


- 2** Press the reset button on the logic board, then gently but firmly push on the vertical plate until the logic board is back into place within the computer. You'll need to push a little harder at the end to make sure the connectors at the back of the board are seated in their slot.

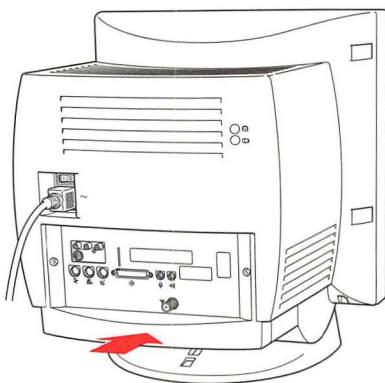


- 3** Slip the three tabs at the top of the back panel into the matching grooves in the computer case.

Slip the three tabs on the back panel into the grooves in the computer case.



- 4** Then snap the bottom of the panel into place, making sure it is flush with the back of the computer.



Snap the plastic back panel into place.

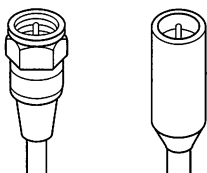
- 5** Reinsert the security screws on both sides of the back panel.

Making connections to the TV tuner card

After installing the TV tuner card by attaching the card, you then attach an antenna or cable service connection to the card.

Note: To view closed captions on a videotape that has them, you must connect the VCR to the TV tuner card, not the video input card.

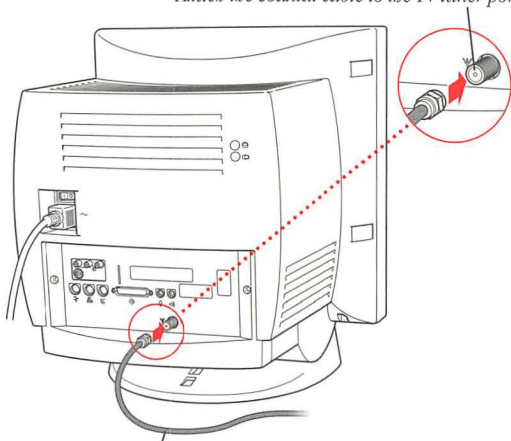
Important To connect the TV tuner card to a cable service or to an antenna, you must use an F-type coaxial cable connector. Do not attach or detach the coaxial cable while the computer is turned on.



F-type coaxial cable connectors

- 1 Connect the card to a cable service or to an antenna using an F-type coaxial cable connector.

Attach the coaxial cable to the TV tuner port.



Coaxial cable from an external TV antenna or cable TV service

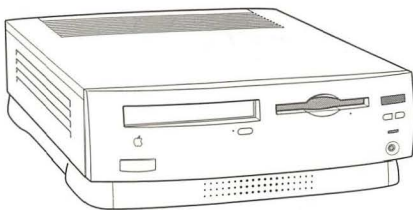
- 2 Reconnect any cables you disconnected at the start of this process.

You may need to reset the date and time on the computer. If so, see the documentation that came with your computer.

Skip the next section, “Installing the Video Input and TV Tuner Cards in a Modular Computer,” and go on to the section that follows, “Installing the Software.”

Installing the video input and TV tuner cards in a modular computer

If your system has a separate monitor, like this one, continue with the steps below. If the monitor is built into your system, go back to the section that precedes this one, “Installing the Video Input and TV Tuner Cards in a Compact Computer.”



To install the video input and TV tuner cards in your computer, follow these steps:

Installing the video input card

- 1 Press the Power key on the keyboard to shut down your computer.

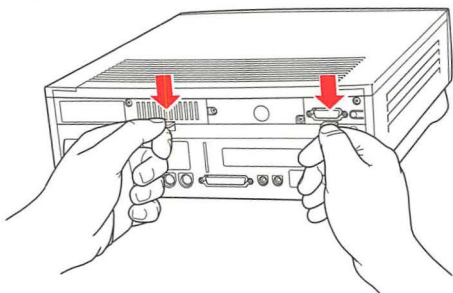
You can also choose Shut Down from the Special menu.

- 2 Unplug all the cables except the power cord from your computer.

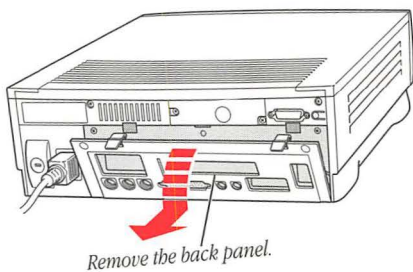
Leaving the power cord plugged in until you're ready to remove the logic board from the computer helps protect the computer from electrostatic discharge damage.

Important To avoid generating static electricity that may damage components, do not walk around the room until you have finished installing the card and closed the computer. Additionally, move the logic board as little as possible while it is outside the computer.

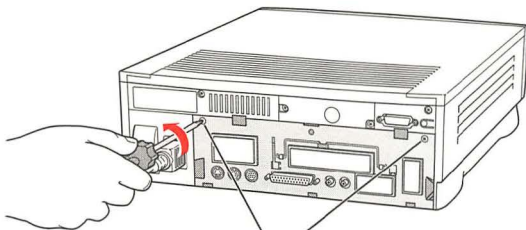
- 3** Place your thumbs on the two tabs at the top of the plastic back panel and press down.



- 4** Pulling gently, swing the panel down and slip it out.



- 5** If there are security screws on the vertical plate on the back of the computer, remove them with a Phillips screwdriver.



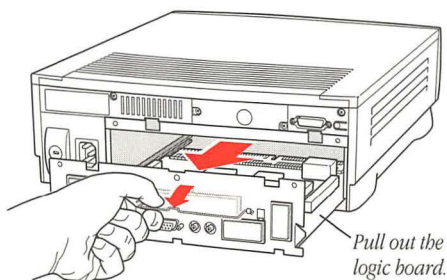
If there are security screws, remove both screws from the vertical plate.

- 6** Unplug the power cord from your computer.

Remember: Don't walk around the room until you have finished installing the card and closed the computer. Move the logic board as little as possible while it's outside the computer.

- 7** Swing the handle out from its storage position. Then grasp the handle and gently but firmly pull it toward you.

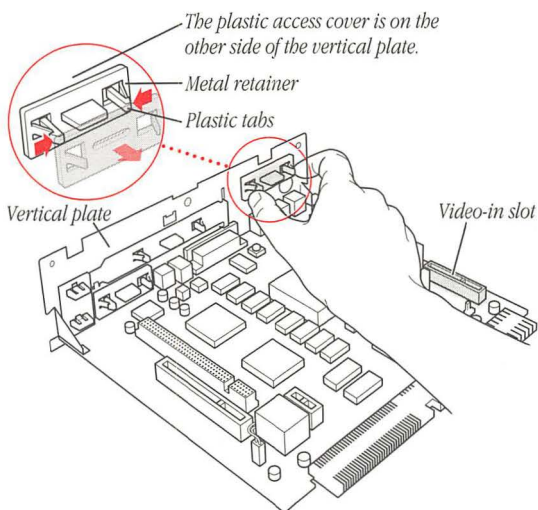
The vertical plate and the logic board to which it's attached slide all the way out of the computer.



Pull out the logic board.

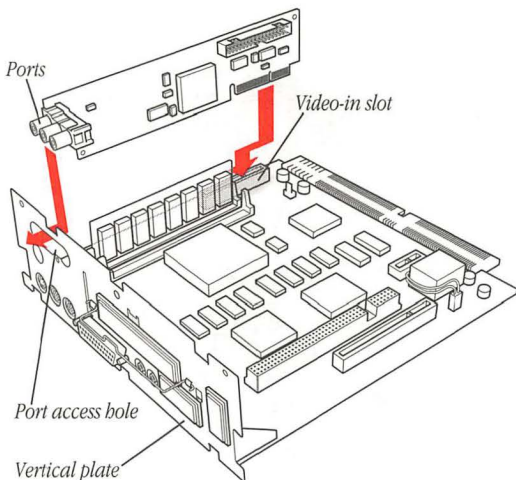
- 8** Squeeze the plastic tabs on the video input port's access cover and pull the metal retainer so the access cover can come off.

When you remove the access cover, you can see the hole that the video input card's ports slide through (as described in step 11).

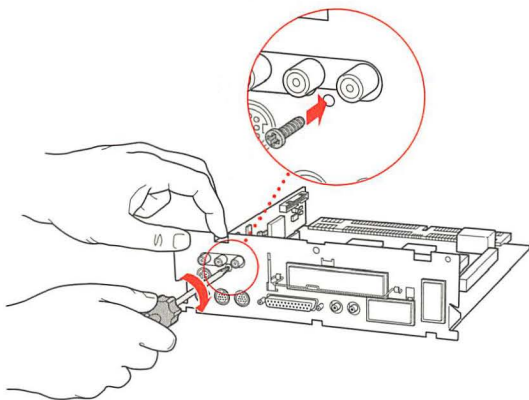


- 9** Remove the video input card from its static-proof bag.
Hold the card by its edges to avoid touching any connectors.
- 10** Locate the video-in slot on the logic board.

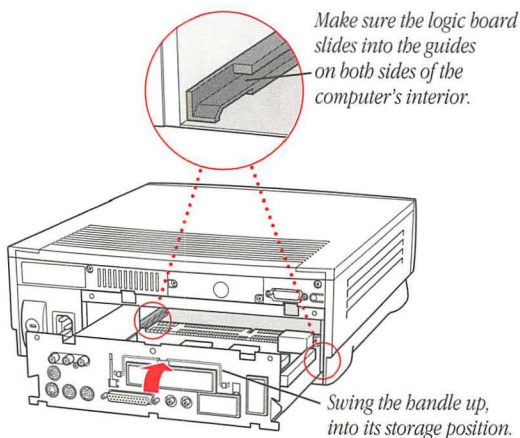
- 11** Slip the ports on the end of the card through the port access hole and gently but firmly press the card down into its slot.



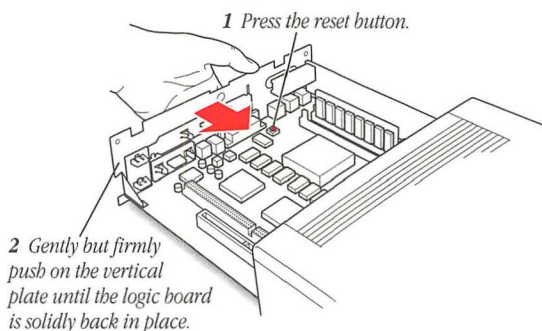
- 12** Screw the card to the vertical plate on the logic board. (Use one of the provided attachment screws.)



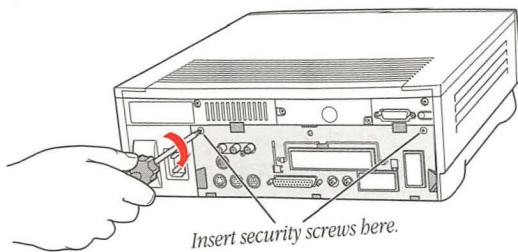
- 13** Slip the base of the logic board into the guide rails inside the computer case, and swing the handle back into its storage position.



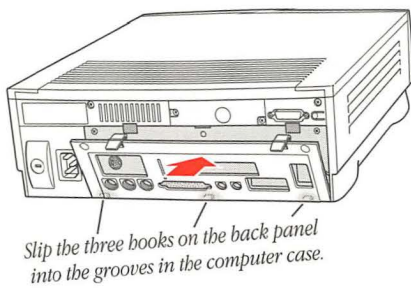
- 14** Press the reset button on the logic board, and then slide the logic board back into the computer case.



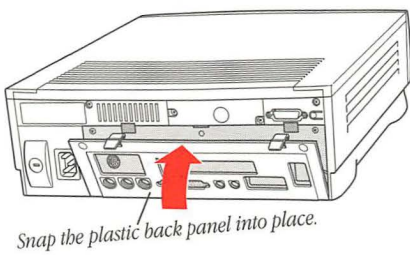
15 If you removed security screws, reinsert them now.



16 Attach the plastic back panel.



17 Swing the plastic back panel up and snap it into place.

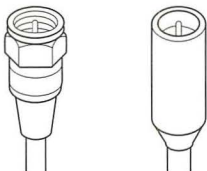


Installing and making connections to the TV tuner card

You install the TV tuner card by attaching the card to the computer and then attaching an antenna or cable service connection to the card.

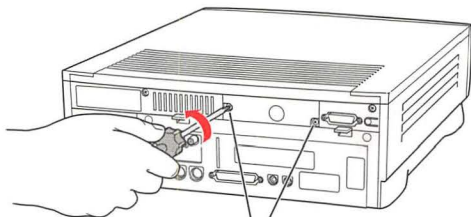
Note: To view closed captions on a videotape that has them, you must connect the VCR to the TV tuner card, not the video input card.

Important To connect the TV tuner card to a cable service or to an antenna, you must use an F-type coaxial cable connector. Do not attach or detach the coaxial cable while the computer is turned on.



F-type coaxial cable connectors

- 1 Be sure the computer is turned off.
- 2 Use a Phillips screwdriver to unscrew the access cover for the TV tuner card port.

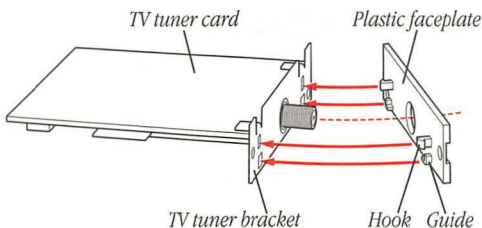


Remove both screws and the access cover.

- 3 Remove the access cover by pulling it toward you.

You won't have to replace the access cover after you've installed the TV tuner card, but you will need the screws. Store the access cover; you may want to put it back on if you ever remove the TV tuner card.

- 4 Remove the TV tuner card from its static-proof bag.
- 5 Snap the plastic faceplate onto the front of the TV tuner card.



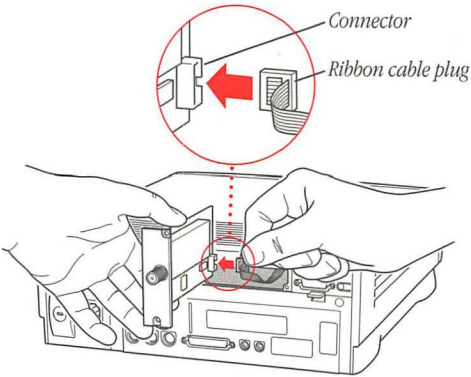
The plastic faceplate fits onto the TV tuner card only one way. Be sure to align the hooks and guides on the plastic faceplate with the corresponding holes in the TV tuner bracket.

- 6 Reach into the access hole you just uncovered and gently pull out the ribbon cable.

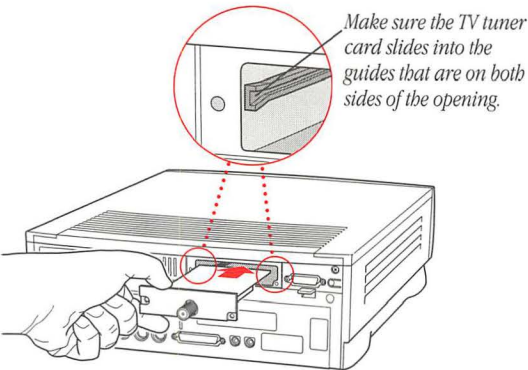
Gently pull the ribbon cable a short way out of the opening so that you can attach it to the card.



- 7** Insert the ribbon cable plug into the connector on the back of the card.

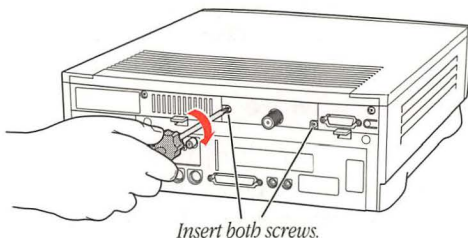


- 8** Gently slide the card into the access hole, with the ribbon cable on the side of the card that's facing down.
Be sure that all the ribbon cable goes into the access hole.

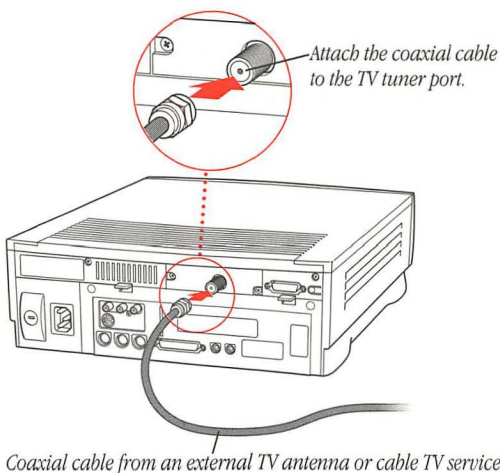


9 Screw the TV tuner card to the computer.

To do this, use the screws you removed in step 2.



10 Connect the card to a cable service or to an antenna using an F-type coaxial cable connector.



Note: To view closed captions on a videotape that has them, you must connect the VCR to the TV tuner card, not the video input card.

Important Do not attach or detach the coaxial cable while the computer is turned on.

- 11** Reconnect the power cord and any cables you disconnected at the start of this process.

You may need to reset the date and time on the computer. If so, see the documentation that came with your computer.

Installing the software

The Apple Video Player application program lets you watch both TV and video on your computer. Follow these instructions to install the Apple Video Player program.

- 1** Start the computer.
- 2** Insert the *Video Software Installer* disk into the floppy disk drive.
- 3** Double-click the disk icon to open it.
- 4** Double-click the Installer icon.
- 5** Click Install.

The program is installed automatically.

- 6** When the installation is complete, click Restart.

Connecting video equipment

If you want to see video on your computer from a VCR, laserdisc player, video camera, or other video equipment, you need to connect the equipment to the ports on the video input card.

You can connect one piece of equipment to the S-video port or one piece to the composite video input port on the video input card. Equipment connected to the S-video input port presents a higher quality video image.

You can also connect a VCR to your TV tuner card if you want to view a videotape with closed captions (for example, a videotape of a TV show with closed captions). See “Installing and Making Connections to the TV Tuner Card” earlier in this chapter.

Preparing to connect video equipment

Before you start, make sure that

- both the Macintosh and the video equipment are turned off
- you place the video equipment near your Macintosh
- you determine which type of video connector you need for your video equipment (see the next section)

Determining which video connector you need

Check the Video Out port on your video equipment. It should look like one of the ports pictured below.



S-video port



Composite video port (RCA-type)

If the Video Out port is composite, it requires a composite (RCA plug) connector. See “Connecting Video Equipment If You Use a Composite (RCA Plug) Connector.”

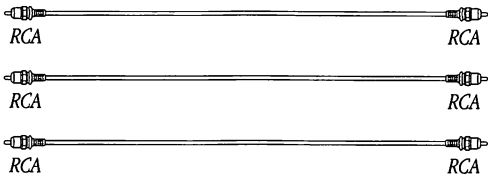


If the Video Out port is S-video, it requires an S-video connector. See “Connecting Video Equipment If You Use an S-video Connector.”

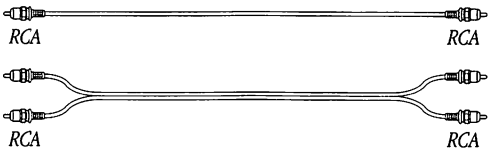


Connecting video equipment if you use a composite (RCA plug) connector

To connect your video equipment you need one video cable and two audio cables, all with RCA plugs at both ends. The cables can be separate or joined. You can purchase cables at electronics supply stores.



or



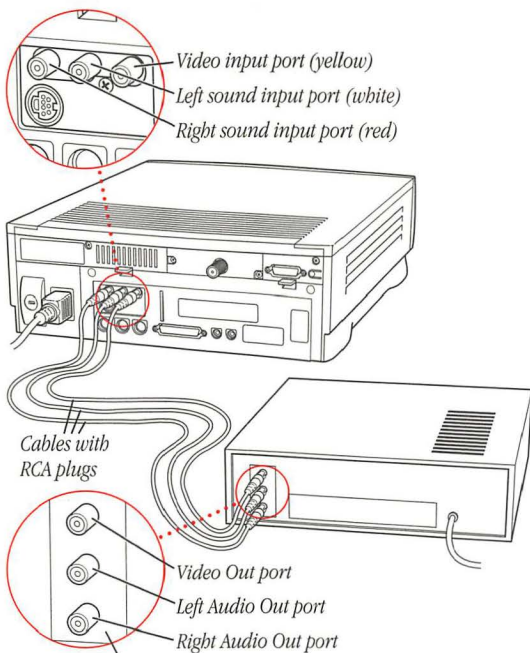
or



- 1** Make sure that both the Macintosh and the video equipment are turned off.
- 2** Attach one end of the video cable to the Video Out port on the video equipment.
- 3** Plug the other end of the video cable into the yellow composite video input port on the video input card.
- 4** Insert the RCA plugs on one end of the audio cables into the left and right Audio Out ports on the video equipment.
- 5** Insert the RCA plugs on the other end of the audio cables into the left (white) and right (red) sound input ports on the video input card.

Be sure to plug the cable from the Left Audio Out port on the video equipment to the left sound input port on the computer. Connect the right ports in the same way.

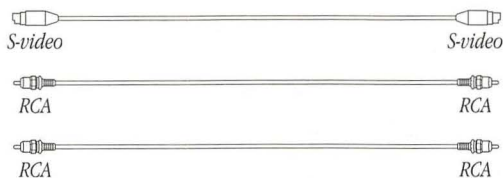
The video input card ports are exactly the same on a compact computer, and the card itself is in about the same position on the back of the unit as in the illustration below.



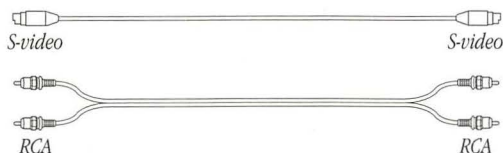
The ports on your video equipment may be arranged and labeled differently from those shown here.

Connecting video equipment if you use an S-video connector

To connect your video equipment you need one video cable with S-video connectors on both ends and two audio cables with RCA plugs at both ends. The RCA cables can be separate or joined. You can purchase cables at electronics supply stores.



or



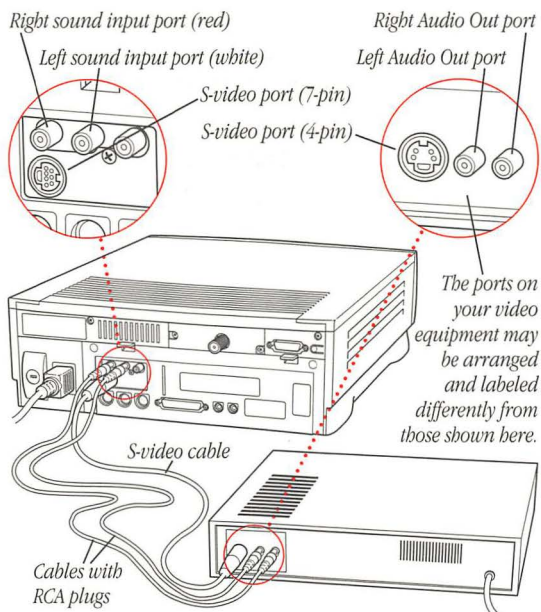
- 1 Make sure that both the Macintosh and the video equipment are turned off.
- 2 Attach one end of the video cable to the Video Out port on the video equipment.
- 3 Plug the other end of the video cable into the S-video input port on the video input card.

About the S-video port: The S-video port on your video input card accepts both 4-pin and 7-pin connectors.

If the connector doesn't slide easily into the port, realign it and try again. Avoid using force, which could damage the card or the connector.

- 4** Insert the RCA plugs on one end of the audio cables into the left and right Audio Out ports on the video equipment.
- 5** Insert the RCA plugs on the other end of the audio cables into the left (white) and right (red) sound input ports on the video input card.

The video input card ports are exactly the same on a compact computer, and the card itself is in about the same position on the back of the unit as in the illustration below.



Your video equipment is now connected to the video input card.

Where to go from here

The TV tuner card is preset to display TV shows from broadcast TV.

- To begin watching video or TV immediately, turn to Chapter 2, “Watching Video.”
- To switch the source of the TV signal from antenna to cable service, see “Choosing a Connection (Antenna or Cable Service)” in the section “Programming Channels” in Chapter 3.
- To customize tuner features in the way that best fits your viewing habits, see Chapter 3, “Customizing the TV Tuner Settings.”
- To learn how to capture individual images or whole movie sequences, see Chapter 4, “Capturing Video Images.”

Watching Video

This chapter contains most of the information you need to use the Apple Video Player program to watch video and TV on your computer whether the signal source is the TV tuner or other video equipment.

If the signal source is the tuner, you may find watching TV more convenient if you first set up some of the options discussed in Chapter 3, “Customizing the TV Tuner Settings.”

See also: “Setting the Closed Caption and Video Text Options” in Chapter 5 and Chapter 6, “Using the Remote Control.”

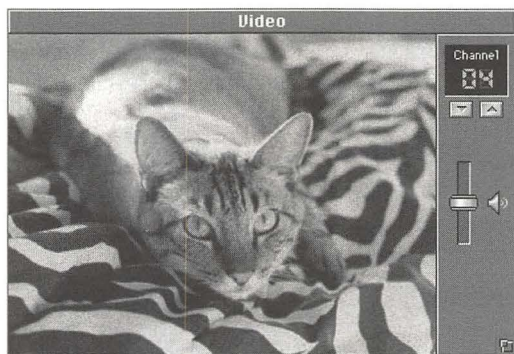
Opening Apple Video Player

To use the Apple Video Player application program, open it by double-clicking its icon in the Apple Extras folder on your hard disk or by pressing the TV/Mac button on the remote control.



Apple Video Player

When the Apple Video Player program opens, a video window appears. You can watch video or TV in the video window.



Using a keyboard shortcut

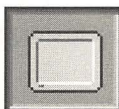
You can also open the Apple Video Player program by pressing a "hot key" (a preset key or combination of keys). When you press this hot key, you switch to the Apple Video Player program no matter what computer program you are currently in. To learn how to set a hot key, see "Setting a Hot Key" in Chapter 3.

Changing the video source

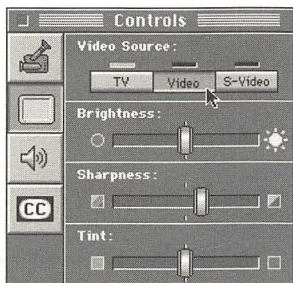
Using the Apple Video Player program, you can view video from the equipment connected to the video input card or view TV (from cable or an antenna).

To change the video source setting, follow these instructions:

- 1 Choose Show Controls Window from the Windows menu.
The Controls window appears.
- 2 Click the video screen icon.



The screen controls appear.



3 Click the video source you want to use.

Choose TV to watch TV, Video to view video from equipment attached to the composite video input port on the video input card, or S-video to view video from equipment attached to the S-video input port on the video input card.

The source change takes effect as soon as you make your choice.

Changing TV channels

When the video source is set to TV and the video window is active, you can use any of the following methods to change channels:

- Click the Up or Down arrow on the video window.
- Select a name from the Names pop-up menu on the video window (if you've given names to channels, as discussed in Chapter 3).
- Press the Left or Right Arrow key on the keyboard.
- Use the remote control.
- Type the channel number.

When you use an arrow, you go to the next available unlocked channel (a channel with unrestricted access). To go to a locked (restricted access) channel, you must enter a channel number.

To go back and forth between the current channel and the last one to which you were tuned, press the Tab key.

Each time the channel changes, the channel name (if one exists) appears briefly on top of the TV picture.

Too many channels? When you browse through channels using the remote control or the arrows on your keyboard or video window, you may see channels that have no picture or that show only static. To skip such channels entirely, see “Programming Channels” in Chapter 3.

Adjusting the sound

When you are watching TV or video in the video window, you can adjust the sound’s volume, balance, and tone. However, you can choose monaural or stereo sound only when you are watching TV in the video window.

Changing the sound volume

There are four ways to change sound volume:

- Use the volume buttons on the front of the computer.
- Drag the slider next to the speaker on the video window.
- Press the Up Arrow key or Down Arrow key on the keyboard.
- Use the remote control.

To mute the sound, click the speaker on the video window, press ⌘-M on the keyboard, or press the muting button on the remote control. To turn the sound back on, click the speaker, press ⌘-M, or press the remote control's muting button. The sound will also go back on if you adjust the volume using any method.

You can also click anywhere in a slider's track to move the slider to that position. The sound adjustments take effect immediately, so you can monitor your changes.

Choosing a sound mode

When the video source is set to TV, you can control whether the sound is mono or stereo. You can also choose the Second Audio Program (SAP), which often transmits in a second language.

To set the sound mode, follow these steps:

- 1** Choose Show Controls Window from the Windows menu.
The Controls window appears.
- 2** Click the sound icon.



The sound controls appear.



- 3 Click the sound mode you want to use (Mono, SAP, or Stereo).

The new mode takes effect immediately.

Adjusting speaker balance and tone

To adjust the speaker balance, bass, or treble:

- 1 Choose Show Controls Window from the Windows menu.
- 2 Click the sound icon.
- 3 Drag the appropriate slider to adjust the sound to your liking.

You can also click anywhere in a slider's track to move the slider to that position. The sound adjustments take effect as you make them, so you can monitor your changes.

Note: You'll only be able to hear changes in balance if you're using external speakers or headphones.

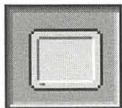
Adjusting the picture

To adjust the brightness, sharpness, and tint of the picture:

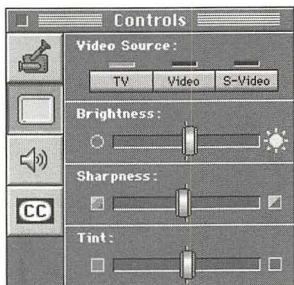
- 1 Choose Show Controls Window from the Windows menu.

The Controls window appears.

- 2 Click the video screen icon.




The screen controls appear.



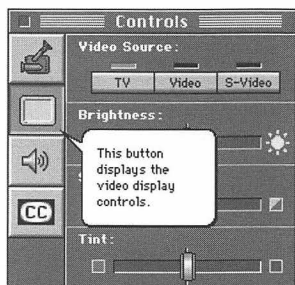
- 3 Drag the appropriate slider to adjust the picture to your liking.

You can also click anywhere in a slider's track to move the slider to that position. The picture adjustments take effect as you make them, so you can monitor your changes.

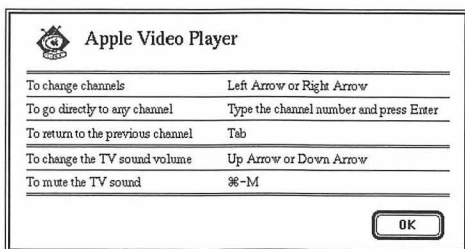
Getting help

On-screen help for the Apple Video Player program is available through the menu at the upper-right corner of the screen, marked with the  icon.

To see explanations of all the items on the screen when you use Apple Video Player, make sure that the video window is active, then choose Show Balloons.



To be reminded of keyboard shortcuts you can use with Apple Video Player, choose Apple Video Player Shortcuts.



Customizing the TV Tuner Settings

This chapter explains how to use the Apple Video Player application program and give names to channels, how to protect channels with a password, and how to set reminders that notify you when important shows are about to begin.

You'll need to open the Apple Video Player program before following the instructions in this chapter. (See "Opening Apple Video Player" in Chapter 2.)

Customizing is optional: The information and instructions provided in this chapter are meant to make using your TV tuner more convenient. You don't have to customize the TV tuner to watch television on your computer. For the basic information you need about watching TV (and other video), read Chapter 2.

See also: "Setting the Closed Caption and Video Text Options" in Chapter 5.

Programming channels

Your TV tuner card can receive channels picked up by your antenna connection (channels 2 through 69) or cable service connection (channels 1 through 125).

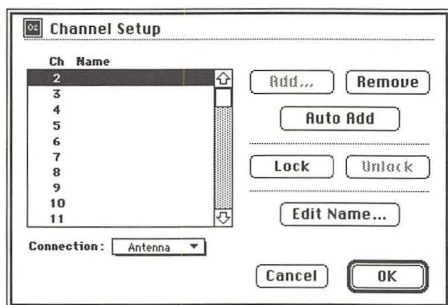
You can make changes to the list of channels that are available with a particular connection. First, you choose a connection; then you can edit the channel list for that connection.

Choosing a connection (antenna or cable service)

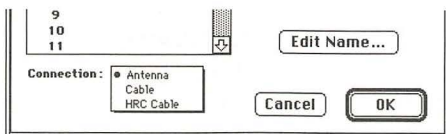
To choose a connection so that you can then edit its channel list, follow these steps:

- 1 Choose Channel Setup from the Setup menu.

The Channel Setup dialog box appears, with the channel list in a scrollable box.



- 2** Open the Connection pop-up menu (under the channel list).



- 3** Choose the connection you want.

The channel list changes to a list of channels available with that connection.

About HRC Cable: Some cable services use HRC cable frequencies instead of standard cable frequencies. If you can't receive channels above channel 13, try selecting HRC Cable in the Connection pop-up menu.

Removing channels automatically

Some channels in a channel list don't have valid signals. You can remove such channels from the list so that they're skipped when you scan through the channels.

To remove channels automatically, click the Auto Add button. Auto Add scans for valid channels and "disables" the rest, removing them from the channel list. Scanning can take up to 30 seconds depending on the number of valid channels.

Note: Auto Add scans only those channels picked up by the connection that is selected in the Connection pop-up menu. You may want to choose each of the other connections and click Auto Add to remove channels in each channel list.

Once a channel is removed, you can still get to it by typing its number on the keyboard. You can also make a channel available again by adding it to the channel list manually. See "Restoring and Adding Channels" later in this chapter.

Removing channels manually

Although Auto Add filters out channels that don't send valid signals, it doesn't remove channels that send valid but scrambled signals (for example, pay-per-view or premium cable channels). Additionally, there may be channels in your viewing area that you would simply prefer not to see when you browse through channels.

Follow these steps to remove channels manually from channel lists:

- 1 Choose Channel Setup from the Setup menu.
- 2 Choose from the Connection pop-up menu the connection for the channel list you want to edit.

Note: You can remove channels only in the channel list for the connection that's currently chosen. For example, if you remove channel 13 from the antenna channel list, it may still be available in the Cable channel list or the HRC Cable channel list.

- 3 Select the channels you want to remove.

To select several channels in a row, hold down the Shift key and drag. To select channels scattered throughout the list, hold down the Shift key and click.

You may have to scroll to see all possible choices.

4 Click Remove.

The channels you selected are removed from the channel list.

Locking channels: You may want to keep a channel in the channel list, but restrict access to it. See “Locking and Unlocking Channels” and “Creating and Changing a Password” later in this chapter.

Important If you want to use Auto Add, do so before you manually add or remove channels. You can use Auto Add after you’ve added and removed channels, but doing so undoes all your previous changes.

Restoring and adding channels

You may want to put a channel back on a channel list—for example, when a station that was temporarily off the air resumes broadcasting. Or you may want to add a channel—for example, when your local cable company adds a new station to its lineup.

Follow these steps to restore or add a channel to a channel list:

- 1 Choose Channel Setup from the Setup menu.
- 2 Choose from the Connection pop-up menu the connection for the channel list you want to edit.

Note: You can restore or add channels only in the channel list for the connection that’s currently chosen. For example, if you add channel 36 to the antenna channel list, it may still not be available in the Cable channel list or the HRC Cable channel list.

3 Click Add.

The Add Channels dialog box appears. If the Add button is dimmed, all possible channels for the currently selected signal source are already available.

4 Select the channels you want to restore or add.

To select several channels in a row, hold down the Shift key and drag. To select channels scattered throughout the list, hold down the Shift key and click.

You may have to scroll to see all possible choices.

5 Click Add.

The channels you selected are added to the channel list.

Giving names to channels

You can assign a name of up to 15 characters to a channel. The name can be the station's call letters, network affiliation, network name, or anything else you want.

Channel names appear in the Names pop-up menu of the video window. See "Changing TV Channels" in Chapter 2 for information on using a name to select a channel.

Follow the steps to name or rename channels.

1 Choose Channel Setup from the Setup menu.

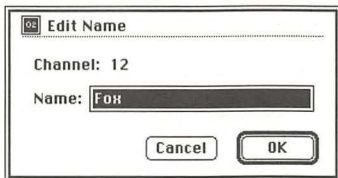
2 Choose from the Connection pop-up menu the connection for the channel list you want to edit.

Note: You can name or rename channels only in the channel list for the connection that's currently chosen. For example, if you give channel 13 a name in the antenna channel list, the name will not appear in the cable channel list or the HRC cable channel list unless you name it in those lists.

- 3 Select a channel from the channel list, then click Edit Name.

Or, you can double-click the channel number or name.

The Edit Names dialog box appears, with any name already assigned to the channel selected. (Initially, channels have no names assigned to them.)

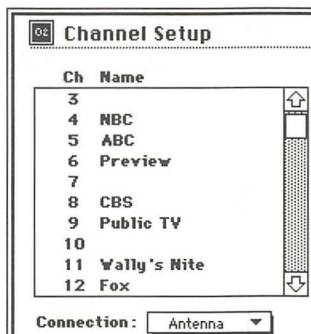


- 4 Type a name for the channel.

To remove a name from the channel, press the Delete key while the entire name is highlighted.

- 5 Click OK.

The name you typed appears to the right of the channel number in the channel list.



Locking and unlocking channels

Locked channels appear in the channel list but don't appear in the video window when you scan through the channels.

- 1 Choose Channel Setup from the Setup menu.
- 2 Choose from the Connection pop-up menu the connection for the channel list you want.

Note: You can lock or unlock channels only in the channel list for the connection that's currently chosen. For example, if you lock channel 15 in the antenna channel list, the channel will not be locked in the cable channel list or the HRC cable channel list unless you name it in those lists.

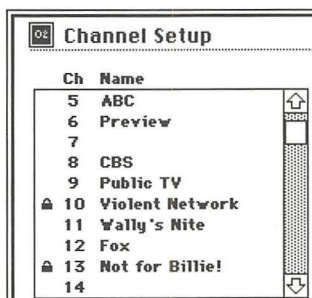
- 3 Select the channels you want to lock by highlighting them.

To select several channels in a row, hold down the Shift key and drag. To select channels scattered throughout the list, hold down the Shift key and click.

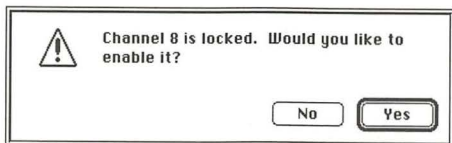
You may have to scroll to see all possible choices.

- 4 Click Lock.

The channels you selected are locked. Small locks appear at the left of the locked channels' numbers in the channel list.



You can watch a locked channel by typing its number on the keyboard. A dialog box appears:



If you click Yes and no password is in effect, you tune in to that channel. However, the channel remains locked and out of the normal scanning sequence. If a password has been set, you must type the password before the channel can become available.

To unlock a channel, choose Channel Setup from the Setup menu, select the channel, and click Unlock.

Creating and changing a password

You can create a password to limit access to the Channel Setup dialog box and locked channels. When you set a password, anyone choosing Channel Setup from the Setup menu or switching to a locked channel must type the password.



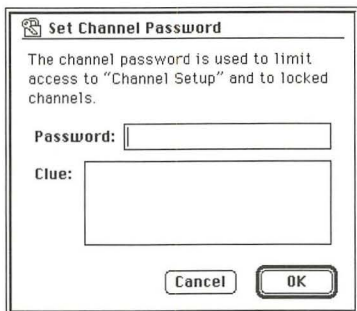
The same password applies to all locked channels.

Creating a password

Follow these steps to create a password:

- 1 Choose Set Channel Password from the Setup menu.

A dialog box appears.



The dialog box is titled "Set Channel Password" and contains the following text: "The channel password is used to limit access to "Channel Setup" and to locked channels." Below this text are two input fields: "Password:" and "Clue:". At the bottom of the dialog box are two buttons: "Cancel" and "OK".

- 2 Type a word or phrase of up to 15 characters.

You can also type a clue to help you remember the password. The clue appears every time anyone seeking access is asked for the password.

If you don't want to have a clue, don't type one.

- 3 Click OK.

Your password is now in effect.

Changing a password

Follow these steps to change a password:

- 1 Choose Set Channel Password from the Setup menu.

A dialog box appears.



- 2 Type the current password and click OK.

As you type, the characters are replaced by bullets to ensure privacy.

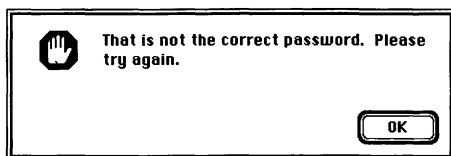
When you click OK, the Set Channel Password dialog box appears. The current password, again replaced by bullets, is selected in the Password text box.

- 3 Type a new password and click OK.

To remove a password, make sure that the password in the Password text box is selected (highlighted). Then press the Delete key before you click OK.

Forgetting your password

If you enter an incorrect password, you see this dialog box:



If you can't remember your password, you must reset the password and then create a new one.

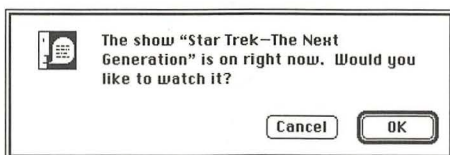
To reset the password, move the Apple Video Player Prefs file to the Trash. The Apple Video Player Prefs file is in the Preferences folder, which is in the System Folder.

When you move the Apple Video Player Prefs file to the Trash, any preferences you have set (for example, picture contrast or channel names) are changed back to the standard settings provided by the Apple Video Player program.

Setting and editing TV reminders

You can arrange to have notices appear on your screen to remind you that specific shows are about to begin.

When the time you've set for a reminder arrives, a notice appears on the screen.



The notice appears no matter which program you are using on your computer at the notification time.

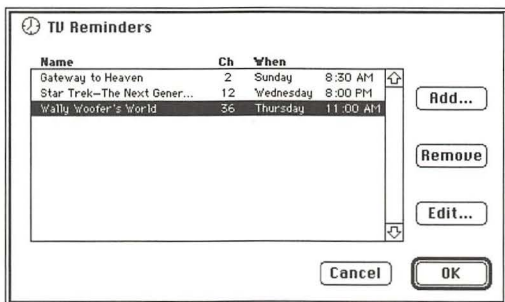
If you click OK in this notice, the Apple Video Player program starts, switches to the proper channel, and displays the show in the video window.

Setting a reminder

To set a reminder, follow these steps:

- 1 Choose TV Reminders from the Setup menu.

The TV Reminders dialog box appears.



2 Click Add.

The Edit Reminder dialog box appears.

Edit Reminder

Name:

When:

Channel:

How often: ☒ Ongoing ☐ One Time Only

☐ Warn me minutes before show

3 Type the show's name as you want it to appear in the notice.

4 Set the day and time that the show begins.

5 Set the channel by typing its number in the Channel number box.

If the channel has a name, you can select the name in the pop-up menu to the right of the Channel number box.

6 Specify whether the reminder should occur on an ongoing basis or just once.

If you select One Time Only, the reminder will be removed automatically after the show airs.

7 If you want an advance warning before the show begins, type the number of minutes before the show starts that you want a warning; then click the "Warn me" checkbox to select it.

The notice can appear up to 99 minutes before show time.

8 Click OK.

You'll return to the TV Reminders dialog box, where you'll see your new entry in the list.

Editing a reminder

To edit a reminder, follow these steps:

- 1 Choose TV Reminders from the Setup menu.
The TV Reminders dialog box appears.
- 2 Select the reminder you want to edit, then click Edit.
Or, you can double-click the reminder.
The Edit Reminder dialog box appears.
- 3 Make the changes you want to, then click OK.
The changes you've made take effect immediately.

Removing a reminder

To remove a reminder, follow these steps:

- 1 Choose TV Reminders from the Setup menu.
The TV Reminders dialog box appears.
- 2 Select the entry you want to remove.

Important There is no Undo for the Remove command. To restore an entry that you have removed, you must reenter all the settings you made in the Edit Reminder dialog box.

- 3 Click Remove.

The entry is removed immediately.

Setting a hot key

You can set a “hot key” that will switch to the Apple Video Player program when you press it, no matter what program you are currently in.

To set a hot key:

- 1 Choose Hot Key from the Setup menu.

The Hot Key dialog box appears.

- 2 Press the key or key combination you want to use for your hot key.

You can use one or more (up to four) of the modifier keys—**⌘**, Option, Control, and Shift—plus any other key.

Don’t use a key combination that is already used by other programs. For example, don’t use **⌘-P**, which is for printing in most programs.

- 3 Click OK.

Your new hot key is ready to use.

If you find that your hot key replaces a keyboard shortcut in another program, repeat these steps to choose another hot key.

Capturing Video Images

This chapter gives instructions for using the Apple Video Player application program to capture

- individual (still) images
- sequences of moving images (as QuickTime movies)

The images in the video window can come from the TV tuner or from video equipment connected to your video input card.

You'll need to open the Apple Video Player program before following the instructions in this chapter (See "Opening Apple Video Player" in Chapter 2.)

Capturing individual images

You have two ways to capture a single image—by using the capture controls in the Controls window or by using the Copy Display command in the Edit menu.

Capture controls

When you use the capture controls in the Controls window, you can freeze the screen image before you save it. Additionally, the capture controls let you save the image directly on a disk.

Follow these steps:

- 1 Choose Show Controls Window from the Windows menu.
The Controls window appears.
- 2 Click the video camera icon.



The capture controls appear.



- 3 Wait until you see the image you want to capture.

The Controls window can remain open without affecting what happens in the video window.

- To freeze the video image at the current frame, click Freeze.

The video freezes, and you can decide whether you want to save the current frame.

To unfreeze the video, click Freeze again.

- To save the current video frame on a disk, click Save.

If the video isn't already frozen, it freezes at the current frame until you complete the Save operation.

A dialog box appears so you can specify where to save the image. When you click Save, the image is saved as a PICT file under the name that you supply. (A PICT file can be opened by most graphics programs.)

Copy Display command

To capture the current screen image by copying, choose Copy Display from the Edit menu or press ⌘-C.

Important When you use Copy Display or press ⌘-C, the current screen image is copied to the Clipboard. The image is not saved on a disk. (To save an image that's on the Clipboard, you must paste it into a document or the Scrapbook.)

Capturing movies

You can capture video sequences (moving images) as QuickTime movies.

Video capture does not work as well with virtual memory on. For best results, turn off virtual memory. To check whether it is on or not, open the Memory control panel. If the On button for virtual memory is selected, click the Off button to turn virtual memory off.

To capture video images, follow these steps:

- 1 Choose Show Controls Window from the Windows menu.

The Controls window appears.

- 2 Click the video camera icon.

The capture controls appear.



- 3 Wait until the sequence that you want to capture begins.

The Controls window can remain open without affecting what happens in the video window.

- 4 Click Record.

Recording begins and the Record button changes to a Stop button.

5 Click Stop when you've recorded as much as you want.

(If you don't click the Stop button, recording continues until the hard disk is full.)

A dialog box appears, in which you can specify a name and location for your movie.

You can also preview the QuickTime movie before you save it.

Use as small a size as you can: The amount of disk storage that a movie takes is directly related to the size of the video window—the larger the window, the more disk space you use. By choosing Smallest Size from the Windows menu before you record, you may be able to save more than 50 percent in storage space. (A movie that uses about 75 megabytes per minute at the normal video window size will use only about 35 megabytes per minute at the smallest video window size.)

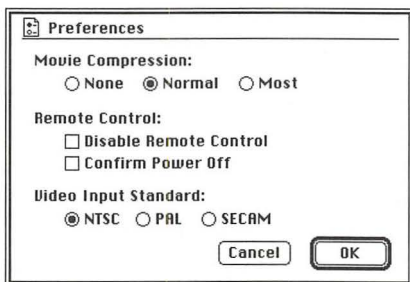
See “Changing the Video Window Size” in Chapter 5.

Using compression

With compression you can store movies in a much smaller space than they would normally require. To use compression, follow these steps before you record a movie:

- 1 Choose Preferences from the Setup menu.

The Preferences dialog box appears.



- 2 Click one of the buttons under Movie Compression.

None means that no compression takes place. *Normal*, the preset choice, uses anywhere from 12 to 50 percent of the disk space that *None* uses; the less movement in each frame of the movie, the greater the savings. *Most* uses slightly less disk space than does *Normal*.

To save the most space you can, choose the smallest size video window and the most compression.

Note: Compression affects picture quality: the more compression you use, the grainer the picture.

Other Special Features

This chapter gives instructions for using the following special features of the Apple Video Player program:

- setting closed caption and video text options
- changing the size of the video window
- changing the color of the windows
- setting the video input standard (NTSC, PAL, or SECAM)

You'll need to open the Apple Video Player program before following the instructions in this chapter (See "Opening Apple Video Player" in Chapter 2.)

Setting the closed caption and video text options

Some broadcast and cable TV programs feature closed caption text tracks for people with impaired hearing. In some areas, video text tracks that display programming schedules, news, or financial data are available. When your video source is set to TV, you may be able to take advantage of special tracks.

Note: If you have a videotape with closed captions (for example, if you've recorded a TV show with closed captions), the captions can only be viewed if your VCR is connected to the TV tuner card. (For instructions, see "Installing and Making Connections to the TV Tuner Card" in Chapter 1.)

- 1 Choose Show Controls Window from the Windows menu.

The Controls window appears.

- 2 Click the CC icon.

The closed captioning controls appear.



3 Click the track you want to use.

CC 1 provides closed captions for most broadcasts that have this feature. CC 2 sometimes provides captions in a second language. Text 1 may provide schedules of programs broadcast on a channel. Text 1 or Text 2 may provide specialized text for TV.

The track you select applies to all channels, although some channels may not provide the feature.

Changing the video window size

There are several ways to change the size of the video window. You can make choices from the Windows menu, use a keyboard shortcut for the three most common sizes, drag the size box, click the zoom box, or use the remote control.

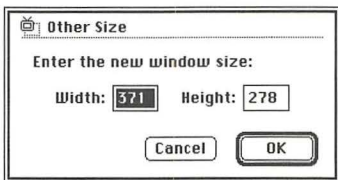
Choosing menu commands

You can choose different video window sizes from the Windows menu:

- Smallest Size uses about 1/16 of the screen.
- Normal Size uses about 1/4 of the screen.
- Largest Size uses as much of the screen as it can.

On monitors that are 640 by 480 pixels or smaller, Largest Size hides both the menu bar and the screen controls. Moving the mouse makes the menu bar visible.

- Other Size opens a dialog box in which you can enter your own size.



Width must be in the range 160 to 640 pixels. Height must be in the range 120 to 480 pixels.

Keep your proportions: The usual video window width-to-height ratio is about 4 to 3. Setting other proportions distorts the video image.

Using keyboard shortcuts

There are three keyboard shortcuts for changing the video window size:

- ⌘-1 sets the smallest size.
- ⌘-2 sets normal size.
- ⌘-3 sets the largest size.

Clicking the zoom box alternates between the current size and the largest size.

Dragging the size box

If you drag the size box, the horizontal and vertical dimensions of the screen change proportionally.

If you drag the size box while holding down the Shift key, the image becomes distorted. (It stretches or shrinks in the direction that you drag.)

Changing the window color

You can set a new color for the border surrounding the video window by choosing Window Color from the Windows menu. The current color is checked. The choices are Dark Gray, Green, Blue, Magenta, Red, and Gold.

“Window Color” is not the display color: The Window Color command has no effect on the colors you see in the video window. For information on setting the brightness, sharpness, and tint in the video window, see “Adjusting the Picture” in Chapter 2.

Setting the video input standard

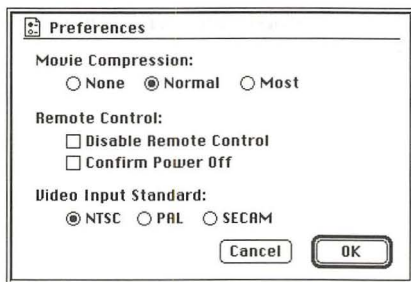
The video input standard determines how the Apple Video Player program interprets video (S-video or composite) signals. This standard is preset to your region in the Apple Video Player software. In most cases, you won't need to change it.

NTSC is the standard video signal for most of the Americas and Japan. PAL is common in Western Europe, Australia, most of Asia, and parts of South America and Africa. SECAM is used in France, Eastern Europe, and parts of Asia and Africa.

To change the video input standard, follow these steps:

- 1 Choose Preferences from the Setup menu.

The Preferences dialog box appears.



- 2 Choose the Video Input Standard setting you need.

If the setting you choose produces a strange image (for example, the picture is too small or the colors are odd), try another setting.

Using the Remote Control

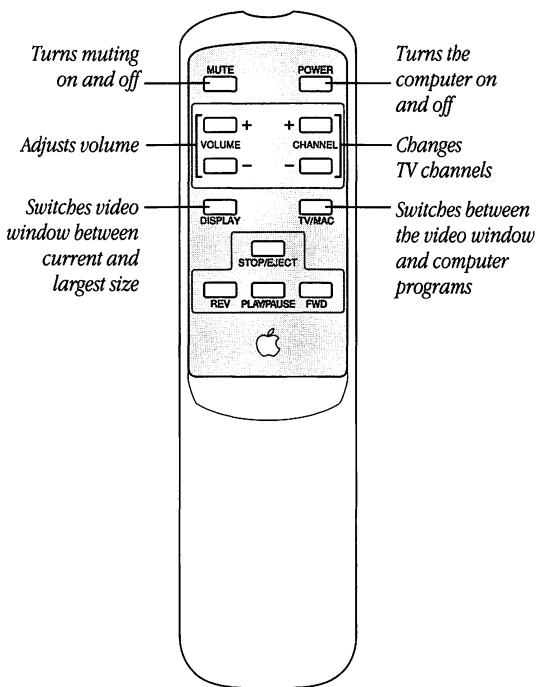
You can use your remote control to

- turn the computer on and off
- switch between computer programs and the Apple Video Player
- control the sound
- change the channel
- manipulate the size of the video window

If your computer has a CD-ROM player, you can also use the remote control to

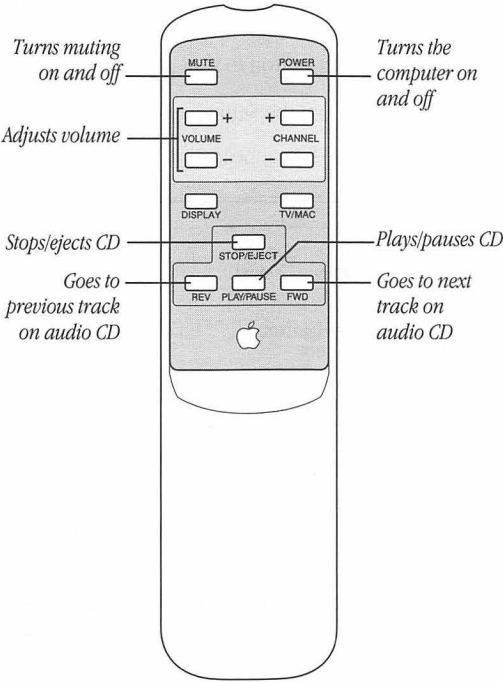
- control the sound from an audio CD
- stop and eject a CD or CD-ROM disc
- pause and continue play of an audio CD
- move to the previous track of an audio CD
- move to the next track of an audio CD

Controlling your TV



Note: Your remote control may look different from the one shown here, but it includes the same buttons.

Controlling your CD-ROM player



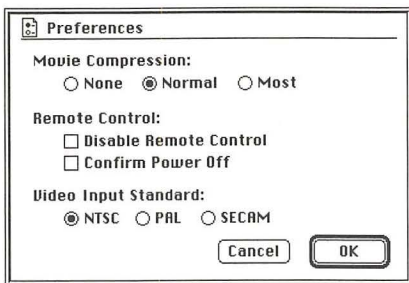
Note: Your remote control may look different from the one shown here, but it includes the same buttons.

Setting preferences

You can change preferences to turn off the remote control and to make a confirmation box appear when you press the remote control's Power button to shut down the computer.

- 1 Choose Preferences from the Setup menu.

The Preferences dialog box appears.



- 2 To turn off the remote control, select the Disable Remote Control checkbox.

If this checkbox is selected, the remote control won't work. To turn the remote control back on, click to deselect the checkbox.

- 3 To make a confirmation box appear so you can change your mind about shutting down the computer when you press the remote control's Power button, select the Confirm Power Off checkbox.

If you no longer want to see the confirmation box, deselect the checkbox.

- 4 Click OK.

The changes take effect immediately.

Troubleshooting

This chapter suggests what to do if problems occur when you're using the Apple Video Player software.

Warning If you have a problem with your Apple equipment and nothing presented in this chapter or in the documentation that came with your computer solves it, consult the service and support information that came with your Apple equipment for instructions on how to contact an Apple-authorized service provider or Apple for assistance.

If you attempt to repair the Apple equipment yourself, any damage you may cause to the Apple equipment will not be covered by the limited warranty on your Apple equipment. Contact an Apple-authorized dealer or service provider for additional information about this or any other warranty question.

Your remote control doesn't work.

- The checkbox labeled Disable Remote Control may be selected in the Preferences dialog box. Choose Preferences from the Setup menu and deselect this checkbox (click to remove the X).
- The remote control is shipped with a clear plastic tab that protects the battery during shipping. You must remove the tab before using the remote control.
- Try changing the remote control's battery. To change the battery, insert a pen tip into the small round hole on the back of the remote control. Pressing the pen tip to the right, pull out the battery, as indicated on the back of the remote control. Replace the battery with a 3-volt lithium cell.
- Try moving closer to your computer. If you are already very close to the computer, point the remote control directly at the remote control receiver on the front of the computer.

The Power button on your remote control doesn't work.

- You may have left a dialog box open. Close any open dialog box, then try the Power button again.

You can't move to the video source that you want by pressing the TV/Mac button.

- You may have the wrong video source selected. Choose Show Controls Window from the Windows menu and click the proper Video Source button.

You see static or a blank screen when you try to watch TV or video.

- Be sure your video equipment is securely connected to the appropriate video input port and your equipment is turned on.
- Be sure your antenna or cable service is securely connected to the coaxial port on the TV tuner card.
- You may have the wrong video source selected. Go to the screen controls in the Controls window and click the appropriate Video Source button.
- Some static may result from poor reception over an antenna, or from problems with cable service. Review the instructions that came with your antenna or cable, or call the supplier for assistance.

The image is too small or it's filled with odd colors.

- The video input standard is set incorrectly. Choose Preferences from the Setup menu and select a different setting.

Unexpected things happen when you try to switch modes using a keyboard shortcut.

- If you can switch between TV and computer using the remote control, but have trouble switching using the keyboard, check the hot key by choosing Hot Key from the setup menu. Be sure the key combination is not used by one of your other programs. For instance, in most Macintosh programs ⌘-P sends a document to the printer. On the desktop, ⌘-N creates a new untitled folder.

You have a cable service and you can't see any channels above channel 13.

- Some cable services use HRC cable frequencies instead of standard cable frequencies. If you can't receive channels above channel 13, choose Channel Setup from the Setup menu and select HRC Cable from the Connection pop-up menu.

You can't see the Names pop-up menu on the video window.

- You haven't given a name to any channel. See "Giving Names to Channels" in Chapter 3.
- You may have the wrong signal source selected. Each signal source (antenna, or standard or HRC cable) has its own channel list and potential list of channel names. Choose Channel Setup from the Setup menu and make a different choice from the Connection pop-up menu.

You can't see the volume slider on the video window.

- The video window is too small or too large. Change the size by making a choice from the Windows menu or by dragging the size box.

A

- access cover
 - TV tuner card port, on a modular computer 28–29
 - video-in, on a compact computer 13; on a modular computer 24
- access to channels, restricting 58–59
- Add Channels dialog box 56
- adding channels to a list 55–56
- antenna
 - choosing in Channel Setup dialog box 52–53
 - connecting the TV tuner card to, if you have a compact computer 19–20; if you have a modular computer 28, 31
 - grounding v-vi
 - troubleshooting 85
- Apple-authorized service providers, contacting vii, 83
- Apple Extras folder 42
- Apple Video Player Prefs file 62
- Apple Video Player program
 - adjusting speaker balance and tone 47
 - adjusting the picture 48
 - adjusting the sound 45–47
 - capturing video images and movies 67–72
 - changing the video source 43–44
 - changing the video window size 75–77
 - changing the window color 77
 - changing TV channels 44–45
 - creating/changing passwords 59–62
 - getting on-screen help 49
 - icon 42
 - installing 32
 - keyboard shortcuts 42, 49, 66, 76, 86
 - locking/unlocking channels 58–59
 - naming channels 56–57
 - programming channels 52–56
 - screen controls 43, 47, 48, 49
 - setting a new hot key 66
 - setting/changing TV reminders 63–65
 - setting closed caption options 74–75

- setting the video input standard 78
- setting video text options 74–75
- starting the program 42, 66
- arrow keys
 - on keyboard 44, 45
 - on video window 44
- audio cables 35, 38, 39
- Audio Out ports 36–37, 39
- Auto Add 53, 55

B

- balance, adjusting 47
- Balloon Help 49
- battery in remote control, changing 84
- blank screen, troubleshooting 85
- brightness, adjusting 48
- built-in monitor. *See* compact computer

C

- cable connectors. *See* connectors
- cables
 - audio 35, 38, 39
 - ribbon cable, on a compact computer 8–9; on a modular computer 29–30
 - video 35, 38
- cable service
 - choosing in Channel Setup dialog box 52–53

- connecting the TV tuner card to, if you have a compact computer 19–20; if you have a modular computer 28, 31
- troubleshooting 85, 86
- cable system, grounding v-vi
- capture controls 68, 70
- capturing
 - individual video images 68–69
 - movies 70–72
- CD-ROM player functions, controlling with the remote control 79, 81
- channel lists, working with 53–59
- channels
 - changing 44–45
 - locking/unlocking 58–59
 - naming 56–57
 - programming 52–56
 - removing 53–55
 - restoring or adding 55–56
- Channel Setup dialog box 52
- Choose Channel Setup (Setup menu) 52–59
- closed captioning controls 74
- closed captions
 - setting options for 74–75
 - viewing on videotape 19, 28, 31
- color of video window
 - border, changing 77
- ⌘-C, copy a screen image to the Clipboard 69
- ⌘-M, mute the sound 46

- communications regulation
 - information vii-viii
- compact computer, installing
 - the video input and TV tuner cards 3–20
- composite connectors (RCA plug) 34, 35–37
- composite video port (RCA-type) 34
- compression, using for
 - storing movies 72
- confirmation box, displaying
 - for remote control Power button 82
- connecting. *See also* installing
 - TV tuner card to cable service or antenna on a compact computer 19–20; on a modular computer 28, 31
 - video equipment 33–39
- connection, choosing a type of 52–53
- Connection pop-up menu (Channel Setup dialog box) 53–58
- connectors
 - composite (RCA plug) 34, 35–37
 - F-type coaxial 19–20, 28, 31
 - S-video 34, 38–39
- contents of your package 2
- Copy Display (Edit menu) 68, 69

D

- dialog boxes
 - Add Channels 56
 - Channel Setup 52
 - Edit Names 57
 - Edit Reminder 64, 65
 - Other Size 76
 - Preferences 72, 78, 82
 - Set Channel Password 60
 - TV Reminders 63, 65
 - Verify Channel Password 61
- disabling
 - channels 53–55
 - the remote control 82
- disk storage for movies 71–72

E

- editing
 - passwords 61
 - TV reminders 65
- Edit Names dialog box 57
- Edit Reminder dialog box 64, 65

F

- folders
 - Apple Extras 42
 - Preferences 62
- freezing a screen image
 - before capturing 68–69
- F-type coaxial cable
 - connectors 19–20, 28, 31

G

- grounding an outdoor antenna or cable system v-vi
- grounding plug v

H

- help, on-screen 49
- hot key
 - setting 66
 - troubleshooting 86
 - using 42
- HRC cable connections 53

I, J

- icons
 - Apple Video Player 42
 - sound 46
 - video camera 68
 - video screen 43, 48
- images, capturing 68–69
- installing
 - Apple Video Player program 32
 - video input and TV tuner cards in a compact computer 3–20; in a modular computer 21–40
- interference with radio or television reception vii-viii

K

- keyboard shortcuts
 - for changing the video window size 76
 - on-screen reminder of choices 49
 - for opening Apple Video Player 42, 66
 - switching modes, troubleshooting 86

L

- locking channels 58–59. *See also* passwords
- logic board
 - removing from a compact computer 3–7; from a modular computer 22–23
 - replacing in a compact computer 16–18; in a modular computer 26–27
- tray 10

M

- modifier keys 66
- modular computer, installing the video input and TV tuner cards 21–40
- Mono sound mode setting 46–47
- movies
 - capturing 70–71
 - disk storage and 71
 - using compression 72
- muting the sound 46

N

Names pop-up menu,
troubleshooting 86

naming

channels 56–57

movies 71

NTSC video signal

standard 78

O

on-screen help for Apple
Video Player 49

Other Size dialog box 76

P

package contents 2

PAL video signal standard 78

passwords, creating and
changing 59–62

PICT files, saving images
as 69

picture, adjusting 48

plastic faceplate 2, 9, 29

ports

Audio Out 36–37, 39

composite video (RCA-
type) 34

sound input 36–37, 39

S-video 34, 38–39

TV tuner 20, 31

video input card 14, 25,
36–37, 39

Video Out 34, 36–37, 38

Power button on remote
control

displaying a confirmation
box for 82

troubleshooting 84

power cord 4, 21, 23

power lines, outside antenna
system and vi

Preferences dialog box 72,
78, 82

Preferences folder 62

Preferences (Setup menu)
72, 78, 82

programming channels on
TV tuner 52–56

Q

QuickTime movies,
capturing video
sequences as 70–71

R

radio reception, interference
with vii–viii

RCA plug connectors 34,
35–37

RCA-type port 34

recording. *See* capturing
reminders, setting and
changing 63–65

remote control

changing the battery 84

displaying a confirmation
box for Power
button 82

functions of 79–81

illustration 2, 80–81

troubleshooting 84

turning off 82

- removing
 - channels from a list 53–55
 - the logic board from a compact computer 3–7; from a modular computer 22–23
 - passwords 61
 - TV reminders 65
 - replacing the logic board
 - in a compact computer 16–18
 - in a modular computer 26–27
 - reset button on logic board
 - of a compact computer 17
 - of a modular computer 26
 - restoring channels to a list 55–56
 - restricting access to channels 58–59
 - ribbon cable
 - in a compact computer 8–9
 - in a modular computer 29–30
- S**
- safety information v-vi
 - SAP sound mode setting 46–47
 - saving a video frame on disk 69
 - scrambled signals from channels 54
 - screen controls for Apple Video Player 43, 47, 48, 49
 - screen dimensions, changing with the size box 77
 - SECAM video signal standard 78
 - Second Audio Program (SAP) 46
 - second language
 - closed captions for 75
 - transmitting in 46
 - Set Channel Password dialog box 60
 - Set Channel Password (Setup menu) 60–61
 - Setup menu
 - Choose Channel Setup 52–59
 - Preferences 72, 78, 82
 - Set Channel Password 60–61
 - TV Reminders 63–65
 - sharpness, adjusting 48
 - sheet metal logic board tray 10
 - Show Balloons 49
 - Show Controls Window (Windows menu) 43, 46–48, 68–71, 74–75
 - shutting down the computer 3, 21, 82
 - sound
 - adjusting the volume 45–46
 - setting the mode 46–47
 - sound input ports 36–37, 39
 - speaker balance and tone, adjusting 47

- static electricity, avoiding
 - generating 4, 21
- static on screen,
 - troubleshooting 85
- Stereo sound mode setting 46–47
- S-video connectors and port 34, 38–39
- S-video video source setting 43–44

T

- Tab key 45
- television reception,
 - interference with
 - vii-viii
- tint, adjusting 48
- tone, adjusting 47
- troubleshooting
 - can't receive channels
 - above 13 86
 - image too small or filled
 - with odd colors 85
 - keyboard shortcuts 86
 - Names pop-up menu
 - doesn't appear 86
 - poor reception 85
 - remote control 84
 - static or blank screen 85
 - volume slider not
 - visible 86
- turning off the computer. *See* shutting down the computer
- TV channels, changing 44–45
- TV functions, controlling
 - with the remote control 79, 80
- TV/Mac button on remote control
 - opening Apple Video Player 42
 - troubleshooting 84
- TV reminders, setting and changing 63–65
- TV Reminders dialog box 63, 65
- TV tuner card
 - illustration 2
 - installing and making connections in a modular computer 28–32
 - installing in a compact computer 8–12
 - making connections in a compact computer 19–20
- TV tuner port
 - on a compact computer 20
 - on a modular computer 31
- TV tuner port plug 12
- TV video source setting 43–44

U

- unlocking channels 59. *See also* passwords

V

- Verify Channel Password
 - dialog box 61
- vertical plate
 - on a compact computer 13, 14, 17
 - on a modular computer 23, 24, 25
- Video as video source setting 46–47
- video cables 35, 38
- video camera icon 68
- video equipment, connecting 33–39
- video-in access cover
 - removing from a compact computer 13
 - removing from a modular computer 24
- video input card
 - connecting equipment to 33–39
 - illustration 2
 - installing in a compact computer 13–15
 - installing in a modular computer 21–27
- video input card ports 14, 25, 36–37, 39
- video input standard
 - setting 78
 - troubleshooting 85
- video-in slot
 - in a compact computer 13, 14
 - in a modular computer 24, 25
- Video Out ports 34, 36–37, 38

- video screen icon 43, 48
- Video Software Installer* disk 32
- video source, changing 43–44
- video text, setting options for 74–75
- video window
 - changing border color 77
 - changing size of 75–77
- virtual memory, and
 - capturing movies 70
- volume, changing 45–46
- volume slider, not visible on video window 86

W, X, Y, Z

- warranty on computer equipment 83
- window. *See* video window
- Window Color (Windows menu) 77
- Windows menu
 - changing video window size 75–76
 - Show Controls Window 43, 46–48, 68–71, 74–75
 - Window Color 77
- wire handle on logic board 7, 16



Apple Computer, Inc.

1 Infinite Loop

Cupertino, California 95014-2084

408.996.1010

030-7130-A

Printed in U.S.A.