

TERMINAL VALUE PROBLEM FOR SINGULAR ORDINARY DIFFERENTIAL EQUATIONS: THEORETICAL ANALYSIS AND NUMERICAL SIMULATIONS OF GROUND STATES

ALEX P. PALAMIDES AND THEODOROS G. YANNOPOULOS

Received 18 October 2005; Revised 26 July 2006; Accepted 13 August 2006

A singular boundary value problem (BVP) for a second-order nonlinear differential equation is studied. This BVP is a model in hydrodynamics as well as in nonlinear field theory and especially in the study of the symmetric bubble-type solutions (shell-like theory). The obtained solutions (ground states) can describe the relationship between surface tension, the surface mass density, and the radius of the spherical interfaces between the fluid phases of the same substance. An interval of the parameter, in which there is a strictly increasing and positive solution defined on the half-line, with certain asymptotic behavior is derived. Some numerical results are given to illustrate and verify our results. Furthermore, a full investigation for all other types of solutions is exhibited. The approach is based on the continuum property (connectedness and compactness) of the solutions funnel (Kneller's theorem), combined with the corresponding vector field's ones.

Copyright © 2006 A. P. Palamides and T. G. Yannopoulos. This is an open access article distributed under the Creative Commons Attribution License, which permits unrestricted use, distribution, and reproduction in any medium, provided the original work is properly cited.

1. Introduction

In order to study the behavior of nonhomogeneous fluids, Dell'Isola et al. [6] added an additional term to the volume-free energy $E_0(\rho)$ and hence the total energy of the fluid becomes

$$E(\rho, |\nabla \rho|^2) = E_0(\rho) + \frac{\gamma}{2} |\nabla \rho|^2, \quad \gamma > 0. \quad (1.1)$$

Then, under isothermal process, the D'Alembert-Lagrange principle can be applied (taking into account the conservation of mass) on the functional

$$J(\rho, \bar{\mathbf{v}}) = \int_{t_1}^{t_2} \int_{\Omega} \left(\rho \frac{|\bar{\mathbf{v}}|^2}{2} - E(\rho, |\nabla \rho|^2) \right) d\omega dt \quad (1.2)$$

2 A terminal BVP

to get the differential system

$$\rho_t + \operatorname{div}(\rho \bar{v}) = 0, \quad \frac{d\bar{v}}{dt} + \nabla(\mu(\rho) - \gamma \Delta \rho) = 0, \quad (1.3)$$

where $\mu(\rho) = dE_0(\rho)/d\rho$ is the so called *chemical potential of the fluid*. When there is no motion of the fluid, this system is reduced to the equation

$$\gamma \Delta \rho = \mu(\rho) - \mu_0, \quad (1.4)$$

where μ_0 is a constant.

The differential equation (1.4) can be regarded as a model for microscopical spherical bubbles in a nonhomogeneous fluid. Because of the symmetry, we are interested in a solution depending only on the radial variable ρ . In that case [6] (see also [12]), (1.4) can be written as

$$(r^{n-1} \rho'(r))' = \frac{r^{n-1}}{\gamma} \mu(\rho) - \mu_0, \quad (1.5)$$

where $n = 2, 3, \dots$, and it is known as the *density profile equation*. We must add boundary conditions on (1.5):

(i) because of the spherical symmetry, the derivative of ρ must vanish at the origin

$$\rho'(0) = 0; \quad (1.6)$$

(ii) since the bubble is surrounded by a liquid with density ρ_l , we must also have

$$\lim_{r \rightarrow +\infty} \rho(r) = \rho_l > 0. \quad (1.7)$$

We are interested in a strictly increasing solution $\rho = \rho(r)$ of the boundary value problem (1.5)–(1.7) with $0 < \rho(r) < \rho_l$, a function describing an *increasing mass density profile*.

In the simple case under consideration, the chemical potential $\mu(\rho)$ is a third-degree polynomial on ρ with three distinct positive roots $\rho_1 < \rho_2 < \rho_3 = \rho_l$, that is, $\mu = \mu(\rho) = 4\alpha(\rho - \rho_1)(\rho - \rho_2)(\rho - \rho_3)$. For $\lambda = \sqrt{\alpha/\gamma(\rho_2 - \rho_1)}$ and $\xi = (\rho_3 - \rho_2)/(\rho_2 - \rho_1)$, the boundary value problem (1.5)–(1.7) can be written (without loss of generality) as

$$\begin{aligned} \frac{1}{r^{n-1}} (r^{n-1} \rho'(r))' &= 4\lambda^2(\rho + 1)\rho(\rho - \xi) := f(\rho), \quad 0 < r < +\infty, \\ \lim_{r \rightarrow 0+} r^{n-1} \rho'(r) &= 0, \quad \lim_{r \rightarrow +\infty} \rho(r) = \xi. \end{aligned} \quad (1.8)$$

The solutions of this ordinary differential equation determine the mass density profile. Furthermore, BVPs of type (1.8) have also been used as models in the nonlinear field theory (see [2, 7] and the references therein). However the study of BVP (1.8) is not an easy subject (see [6, page 546]), but we endeavour to formulate a rigorous mathematical approach. Berestycki et al. [3] studied a generalized Emden equation and explained the physical significance of its solutions. In a recent paper [4], Bonheure et al. obtained some

results on existence and multiplicity of the singular BVP

$$\begin{aligned} u'' + k \frac{u'}{t} &= c(t)g(u), \\ u'(0) &= 0, \quad u(M) = 0, \end{aligned} \quad (1.9)$$

where $c(t)$ is bounded on $(0, +\infty)$ and $M \leq \infty$, combining shooting argument with variational methods.

For strongly singular higher-order linear differential equations together with two-point conjugate and right-focal boundary conditions, Agarwal and Kiguradze [1] provided easily verifiable best possible conditions which guarantee the existence of a unique solution.

Using in this paper a quite different approach, we are going to prove, the existence of an increasing solution of (1.8) with a unique zero, at least for every $\xi \in (0, \xi_M)$, where *the exact value of ξ_M remains an open problem*. Our estimation indicates that $\xi_M \simeq 0.83428$. As many previous studies pointed out, the existence of such a solution is a very important and meaningful case, in the above theories (bubble density, radius, surface tension, etc., are depending on it).

2. Preliminaries: general theory

Let us consider the following boundary value problem:

$$\begin{aligned} \frac{1}{p(r)} (p(r)\rho'(r))' &= f(r, \rho(r), p(r)\rho'(r)), \\ \rho(0) &= \rho_0 \in (-1, 0), \\ \lim_{r \rightarrow +\infty} \rho(r) &= \xi, \end{aligned} \quad (2.1)$$

where $f : \Omega := [0, +\infty) \times \mathbb{R}^2 \rightarrow \mathbb{R}$ is continuous with three distinct zeros -1 , 0 , and $\xi \in (0, 1)$, that is,

$$f(t, -1, v) = f(t, 0, v) = f(t, \xi, v) = 0 \quad \forall t \in (0, +\infty), v \in \mathbb{R}, \quad (2.2)$$

and further for all $t \in (0, +\infty)$ and $v \in \mathbb{R}$,

$$f(t, u, v) \geq 0, \quad u \in (-1, 0) \cup (\xi, +\infty), \quad f(t, u, v) \leq 0, \quad u \in (-\infty, -1] \cup (0, \xi). \quad (2.3)$$

Let us notice from the beginning that the constant functions

$$\rho(r) = -1, \quad \rho(r) = 0, \quad \rho(r) = \xi, \quad r \geq 0, \quad (2.4)$$

are solutions of the equation in (2.1) (with initial values $\rho(0) = -1$, $\rho(0) = 0$, and $\rho(0) = \xi$, resp.) and we will assume throughout of this section that they are unique.

Let us also suppose that $p \in C^1((0, +\infty), (0, +\infty))$ with $\lim_{t \rightarrow 0+} p(t) = 0$ and

$$\int_0^t p(r) dr < \infty, \quad \int_0^t \frac{1}{p(s)} \left\{ \int_0^s p(x) dx \right\} ds < \infty \quad \text{for any } t > 0. \quad (2.5)$$

4 A terminal BVP

Consider now the corresponding initial value problem

$$\begin{aligned} \frac{1}{p(r)}(p(r)\rho'(r))' - f(r, \rho(r), p(r)\rho'(r)) &= 0, \\ \rho(0) = \rho_0 \in (-1, 0), \quad \lim_{r \rightarrow 0^+} p(r)\rho'(r) &= 0, \end{aligned} \quad (2.6)$$

and prove the next existence results.

PROPOSITION 2.1. *Assume that the assumption (2.5) and the sign property on f are fulfilled and further that there is a constant $M > 0$ such that*

$$|f(t, u, v)| \leq M, \quad t \geq 0, u, v \in \mathbb{R}. \quad (2.7)$$

Then the IVP (2.6) admits a global solution.

Proof. Let ρ be a solution of (2.6). Then $\rho \in \mathcal{X}(P)$, the family of all solutions emanating from $P = (\rho_0, 0)$, implies

$$\rho(t) = (S\rho)(t), \quad (2.8)$$

where

$$(S\rho)(t) := \rho_0 + \int_0^t \frac{1}{p(s)} \int_0^s p(r) f(r, \rho(r), p(r)\rho'(r)) dr ds. \quad (2.9)$$

For any (fixed) positive T , we may define the Banach space

$$K^1[0, T] = \{u \in C[0, T], pu' \in C[0, T]\} \quad (2.10)$$

with norm

$$\|u\|_1 = \max \{\|u\|, \|pu'\|\}, \quad (2.11)$$

where $\|u\|$ denotes the usual sup-norm of u on $[0, T]$. On the other hand, in order to prove that the operator

$$S : K^1[0, T] \longrightarrow K^1[0, T] \quad (2.12)$$

is compact, we note that if ρ_0 takes values in a bounded set, there exist positives K_0 and K_1 such that

$$\begin{aligned} |(S\rho)(t)| &\leq |\rho_0| + M \int_0^t \frac{1}{p(s)} \int_0^s p(r) dr ds \leq K_0, \\ |p(t)(S\rho)'(t)| &\leq M \int_0^t p(r) dr \leq K_1, \quad 0 \leq t \leq T. \end{aligned} \quad (2.13)$$

Then,

$$\|S\rho\|_1 \leq K = \max \{K_0, K_1\}. \quad (2.14)$$

Furthermore, $\{S\rho\}$ is an equicontinuous family since

$$\begin{aligned} |(S\rho)(t) - (S\rho)(t')| &= \left| \int_{t'}^t \frac{1}{p(s)} \int_0^s p(r) f(r, \rho(r), p(r) \rho'(r)) dr ds \right| \\ &\leq M |\phi(t) - \phi(t')|, \\ |p(t)(S\rho)'(t) - p(t)(S\rho)'(t')| &< \left| \int_{t'}^t p(r) f(r, \rho(r), p(r) \rho'(r)) dr \right| \\ &\leq M |\phi^*(t) - \phi^*(t')|, \quad 0 \leq t, t' \leq T, \end{aligned} \quad (2.15)$$

and the mappings

$$\phi(t) = \int_0^t \frac{1}{p(s)} \int_0^s p(r) dr ds, \quad \phi^*(t) = \int_0^t p(r) dr \quad (2.16)$$

are absolutely continuous. Finally, by an application of the standard Schauder fixed-point theorem, we get a solution $\rho = \rho(r)$ defined over the entire interval $[0, T]$. \square

We consider now the segment

$$E := \{(\rho, p\rho') : \rho = \rho_0 \in (-1, 0), p\rho' = 0\}. \quad (2.17)$$

THEOREM 2.2. *Assume that the assumption (2.5) and the sign property on f are fulfilled. Then (2.6) has a local solution $\rho \in \mathcal{X}(P)$, $P \in E$.*

Proof. Let $B := \{(t, u, v) : t \geq 0, \max\{\|u - \rho_0\|, \|v\|\} < 1\}$. We associate to any $P \in [0, T] \times \mathbb{R}^2$, the closest point Q in B . This is obviously a continuous mapping. Defining the modification $g : [0, T] \times \mathbb{R}^2 \rightarrow \mathbb{R}$ by $g(P) = f(Q)$, we see that g is continuous, bounded, and $g = f$ on B . By the previous proposition, there is a solution $\rho \in \mathcal{X}(P)$ that solves the problem

$$\begin{aligned} \frac{1}{p(t)} (p(t) \rho'(t))' &= g(t, \rho(t), p(t) \rho'(t)), \\ \rho(0) &= \rho_0, \quad \lim_{r \rightarrow 0+} p(r) \rho'(r) = 0 \end{aligned} \quad (2.18)$$

on $[0, T]$. Let

$$\beta := \sup \{s \in [0, T] : (t, \rho(t), p(t) \rho'(t)) \in B \text{ for } 0 \leq t \leq s\}. \quad (2.19)$$

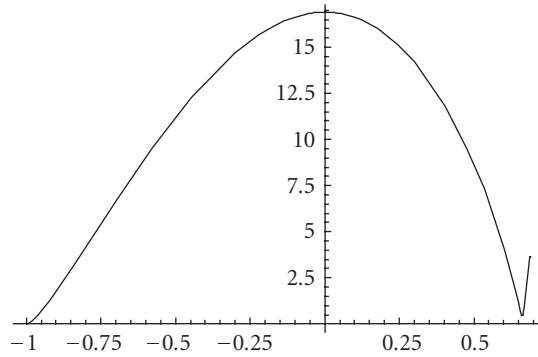
Evidently, $0 < \beta \leq T$. On the other hand, since $g = f$ on B , we have

$$\frac{1}{p(t)} (p(t) \rho'(t))' = f(t, \rho(t), p(t) \rho'(t)), \quad 0 \leq t \leq \beta, \quad (2.20)$$

consequently, ρ is a local solution of (2.6). \square

Taking into account the classical theorem of the extendability of solutions, we impose one more condition on the desired solution

$$\lim_{r \rightarrow +\infty} p(r) \rho'(r) = 0. \quad (2.21)$$

Figure 2.1. ($\xi \simeq 0.6616$, $\rho_0 \simeq -0.999112$).

Actually we seek for a strictly increasing solution of the differential equation in (2.1), which has (exactly) one zero and satisfies the asymptotic relationship $\lim_{r \rightarrow +\infty} \rho(r) = \xi$.

We notice now that a vector field can be defined on the phase plane, with crucial properties for our study. More precisely, noticing (2.3) and considering the $(\rho, p\rho')$ phase semiplane ($p\rho' \geq 0$), we easily check that

$$\begin{aligned} (p\rho')' &< 0 & \text{for } \rho \in (-\infty, -1) \cup (0, \xi), \\ (p\rho')' &> 0 & \text{for } \rho \in (-1, 0) \cup (\xi, +\infty). \end{aligned} \quad (2.22)$$

Thus, it is obvious that any solution of (2.6) with $\rho_0 \geq \xi$ does not satisfy the demand $\lim_{r \rightarrow +\infty} \rho(r) = \xi$, since it is an increasing function. Similarly, whenever $\rho_0 \leq -1$, the correspondingly solution $\rho = \rho(r)$, $r \geq 0$, is not an increasing map. Consequently, *the condition $\rho_0 \in (-1, 0)$ is necessary in order to obtain a solution with the desired properties* and this is the reason for the restriction of the parameter $\rho_0 \in (-1, 0)$ in (2.6). Finally, any trajectory $(\rho(r), p(r)\rho'(r))$, $r \geq 0$, emanating from the segment E , “moves” in a natural way (initially, when $\rho(r) < 0$) toward the positive $p\rho'$ -semiaxis and then (when $\rho(r) \geq 0$) toward the positive ρ -semiaxis (see Figures 2.1–2.4). As a result, assuming a certain growth rate on f , we can control the vector field in such a way that it assures the existence of a trajectory satisfying the given properties and the boundary conditions

$$\lim_{r \rightarrow +\infty} \rho(r) = \xi, \quad \lim_{r \rightarrow +\infty} p(r)\rho'(r) = 0. \quad (2.23)$$

These properties, will be referred to in the rest of this paper as “the nature of the vector field.” Therefore, a combination of properties of the associated vector field with the Kneser’s property of the cross sections of the solutions’ funnel is the main tool that we will employ in our study. It is obvious therefore, that the technique presented here is different from those employed in the previous papers [6, 12], but closely related, at the same time, to the methods of [9, 11] or [10].

For the convenience of the reader and to make the paper self-contained, we summarize here the basic notions used in the sequel. First, we refer to the well-known Kneser’s theorem (see, e.g., the Copel’s text book [5]).

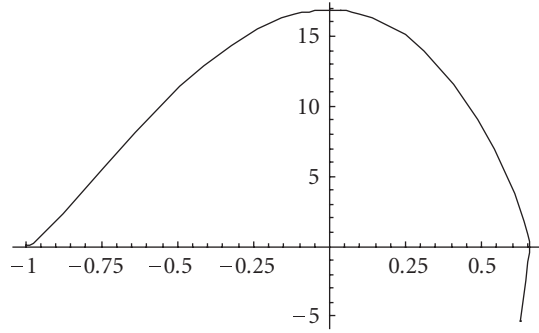


Figure 2.2. ($\xi \approx 0.6617$, $\rho_0 \approx -0.999112$).

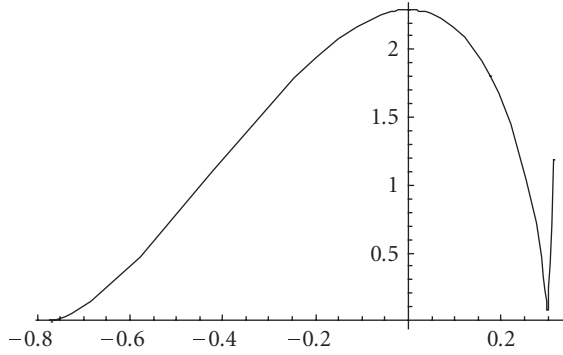


Figure 2.3. ($\rho_0 \approx -0.77075$, $\xi \approx 0.3$).

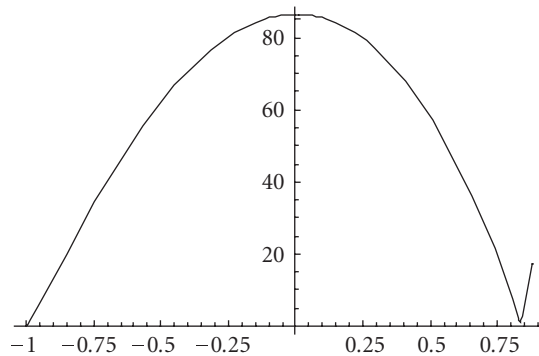


Figure 2.4. ($\rho_0 \approx -0.999999932$, $\xi \approx 0.83428$).

THEOREM 2.3. Consider the system

$$y' = f(x, y), \quad (x, y) \in [\alpha, \beta] \times \mathbb{R}^n, \quad (2.24)$$

with f continuous and let \hat{E}_0 be a continuum (i.e., compact and connected) subset of \mathbb{R}^n and let $\mathcal{X}(\hat{E}_0)$ be the family of all solutions of 2.24 emanating from \hat{E}_0 . If any solution $y \in \mathcal{X}(\hat{E}_0)$ is defined on the interval $[\alpha, \tau]$, then the cross section

$$\mathcal{X}(\tau; \hat{E}_0) = \{y(\tau) : y \in \mathcal{X}(\hat{E}_0)\} \quad (2.25)$$

is a continuum in \mathbb{R}^n .

Reminding that a set-valued mapping \mathcal{G} , which maps a topological space X into compact subsets of another one Y , is called upper semicontinuous (usc) at the point x_0 if and only if for any open subset V in Y with $\mathcal{G}(x_0) \subseteq V$ there exists a neighborhood U of x_0 such that $\mathcal{G}(x) \subseteq V$ for every $x \in U$, we recall the next two lemmas, which were proved (without any assumption of uniqueness of solutions) in [9].

LEMMA 2.4. *Let X and Y be metric spaces and let $\mathcal{G} : X \rightarrow 2^Y$ be a usc mapping. If A is a continuum subset of X such that, for every $x \in A$, the set $\mathcal{G}(x)$ is a continuum, then the image $\mathcal{G}(A) := \cup \{\mathcal{G}(x) : x \in A\}$ is also a continuum subset of Y .*

We consider the set

$$\omega := \{(\rho, p\rho') : -1 \leq \rho < \xi, p\rho' \geq 0\} \quad (2.26)$$

any point $P_0 := (\rho_0, \rho'_0) \in E \subseteq \partial\omega$ and the family $\mathcal{X}(P_0)$ of all noncontinuable solutions of the initial value problem (2.6). By the continuity of the nonlinearity and the nature of the vector field (sign of f), we have two possible cases.

(i) Considering a solution $\rho \in \mathcal{X}(P_0)$, there exists $r_1 \geq 0$ (depending on ρ) such that

$$p(r_1)\rho'(r_1) = 0, \quad \rho(r_1) < \xi, \quad \text{or} \quad p(r_1)\rho'(r_1) > 0, \quad \rho(r_1) = \xi, \quad (2.27)$$

and furthermore the restriction $\rho|_{[0, r_1]}$ is an increasing function. Consequently in this case, we can define a map $\mathcal{K} : E \rightarrow 2^{\partial\omega}$ by

$$\mathcal{K}(P_0) := \{(\rho(r_1), p(r_1)\rho'(r_1)) \in \partial\omega : \rho \in \mathcal{X}(P_0)\}. \quad (2.28)$$

(ii) In the case where $\mathcal{K}(E) = \cup \{\mathcal{K}(P_0) : P_0 \in E\} \neq \emptyset$ and there a point $P_0 \in E$ such that $\text{Dom}(\rho) = [0, +\infty)$ and

$$\lim_{r \rightarrow +\infty} p(r)\rho'(r) = 0, \quad \lim_{r \rightarrow +\infty} \rho(r) = \xi \quad (2.29)$$

for some $\rho \in \mathcal{X}(P_0)$, we will say that P_0 is a singular point of the above map \mathcal{K} . This is exactly the case, the existence of which we must investigate.

LEMMA 2.5 [9]. *The above mapping \mathcal{K} is upper semicontinuous (usc) at any nonsingular point $P_0 := (\rho_0, \rho'_0) \in E$ and the set $\mathcal{K}(P_0)$ is a continuum. Moreover, the image $\mathcal{K}(B)$ of any continuum B is also a connected and compact set.*

We also need another lemma from the classical topology.

LEMMA 2.6 (see [8, Chapter V, Paragraph 47, point III, Theorem 2]). *If A is an arbitrary proper subset of a continuum B and S a connected component of A , then*

$$\overline{S} \cap \overline{(B \setminus A)} \neq \emptyset, \quad (2.30)$$

that is,

$$\overline{S} \cap \partial A \neq \emptyset. \quad (2.31)$$

Let A be a subset of ω . We set

$$\mathcal{X}(A) := \cup \{ \mathcal{X}(P) : P \in A \} \quad (2.32)$$

and recall that $\mathcal{X}(r^*; A) := \{ (\rho(r^*), p(r^*)\rho'(r^*)) : \rho \in \mathcal{X}(A) \}$ represents the *cross-section* of all solutions $\rho \in \mathcal{X}(A)$ at the point $r = r^*$. For the domain ω , let \mathcal{H} denote the above mapping, which is defining with respect to the set ω . Then the following lemma holds.

LEMMA 2.7. *If the subset $E_0 \subset E$ is a continuum such that*

$$\mathcal{H}(E_0) \cap E_\xi^* \neq \emptyset, \quad \mathcal{H}(E_0) \cap E^* \neq \emptyset \quad (2.33)$$

and contains exactly one singular point $P_0 := (\rho_0, p\rho'_0)$ of the map \mathcal{H} , then both the sets $\mathcal{H}(E_0) \cap E_\xi^$ and $\mathcal{H}(E_0) \cap E^*$ are bounded and connected subsets of $\partial\omega$, where*

$$E_\xi^* = \{ (\rho, p\rho') \in \partial\omega : \rho = \xi \}, \quad E^* := \{ (\rho, p\rho') \in \partial\omega : p\rho' = 0 \}. \quad (2.34)$$

Proof. By the continuation of solutions and the singularity of \mathcal{H} at the point P_0 , the set $\mathcal{H}(P_0) = \emptyset$. Taking into account the nature of the vector field and the definition of the singularity of the map \mathcal{H} , this means that

$$\lim_{r \rightarrow +\infty} p(r)\rho'(r) = 0, \quad \lim_{r \rightarrow +\infty} \rho(r) = \xi. \quad (2.35)$$

Since P_0 separates E_0 into two bounded connected sets, the result follows by the continuity of \mathcal{H} and the uniqueness of the solution $\rho(r) = \xi$. \square

PROPOSITION 2.8. *Let $P_0 = (\rho_0, p\rho'_0) \in E_0$ be a singular point of the consequent map \mathcal{H} , where $E_0 \subset E$ is a continuum. Then, every connected component S of the (assuming non-empty) set $S = E^* \cap \mathcal{H}(E_0)$ approaches the boundary E_ξ^* of $\partial\omega$ in the sense that $\overline{S} \cap \partial E_\xi^* \neq \emptyset$.*

Proof. By Lemma 2.7, the set $B = (E^* \cup E_\xi^*) \cap (\mathcal{H}(E_0) \cup \{(\xi, 0)\})$ is a continuum. The set $A = E^* \cap \mathcal{H}(E_0)$ is a connected subset of B . Then the same set $S = E^* \cap \mathcal{H}(E_0)$ is a connected subset of A . Therefore, an ample use of Lemma 2.6 gives $\overline{S} \cap \partial E_\xi^* \neq \emptyset$. \square

Now we give a theorem which summarizes the main results, concerning the existence of a solution of the boundary value problem, under consideration.

THEOREM 2.9. *Let also E_0 be a continuum in E such that*

$$\mathcal{H}(E_0) \cap E^* \neq \emptyset, \quad \mathcal{H}(E_0) \cap E_\xi^* \neq \emptyset. \quad (2.36)$$

Then the boundary value problem (2.1)–(2.21) admits a strictly increasing solution.

Proof. The result follows by Proposition 2.8. \square

Remark 2.10. In view of the above procedure and since by assumption $\lim_{t \rightarrow 0+} p(t) = 0$, it is clear that the second initial condition $\lim_{r \rightarrow 0+} p(r)\rho'(r) = 0$ in (2.6) can be relaxed to any one of the form $\lim_{r \rightarrow 0+} p^*(r)\rho'(r) = 0$, where the new function $p^*(r) > 0$, $r > 0$, satisfies also the restriction (2.5) and

$$\lim_{r \rightarrow 0+} p^*(r)\rho'(r) = 0 \implies \lim_{r \rightarrow 0+} p(r)\rho'(r) = 0. \quad (2.37)$$

In particular, if $\lim_{t \rightarrow 0+} p^*(t) = l > 0$, for example whenever $p^*(t) = 1$ is the constant map, then (2.5) are fulfilled automatically, that is, the boundary conditions in (2.6) can read as

$$\rho(0) = \rho_0 \in (-1, 0), \quad \lim_{r \rightarrow 0+} \rho'(r) = 0. \quad (2.38)$$

3. Main results

Consider the following singular boundary value problem:

$$\begin{aligned} \frac{1}{r^{n-1}} (r^{n-1} \rho'(r))' &= 4\lambda^2(\rho + 1)\rho(\rho - \xi) := f(\rho), \\ \lim_{r \rightarrow 0+} r^{n-1} \rho'(r) &= 0, \quad \lim_{r \rightarrow +\infty} \rho(r) = \xi, \end{aligned} \quad (3.1)$$

modeling the density profile problem.

Since $\lim_{\rho \rightarrow 0} (f(\rho)/\rho) = -4\lambda^2\xi$ for every $\varepsilon \in (0, \xi)$, there exists an $\eta \in (0, 1)$ such that

$$\begin{aligned} -4\lambda^2(\xi + \varepsilon)\rho &\leq f(\rho) \leq 4\lambda^2(-\xi + \varepsilon)\rho \leq 0, \quad 0 \leq \rho \leq \eta, \\ 0 &\leq 4\lambda^2(-\xi + \varepsilon)\rho \leq f(\rho) \leq -4\lambda^2(\xi + \varepsilon)\rho, \quad -\eta \leq \rho \leq 0. \end{aligned} \quad (3.2)$$

Consider the corresponding initial value problem

$$\begin{aligned} \frac{1}{r^{n-1}} (r^{n-1} \rho'(r))' &= 4\lambda^2(\rho + 1)\rho(\rho - \xi) := f(\rho), \\ \rho(0) &= -\eta, \quad \lim_{r \rightarrow 0+} r^{n-1} \rho'(r) = 0. \end{aligned} \quad (3.3)$$

In view of Theorem 2.2 and Remark 2.10, this singular IVP has a local solution. By the nature of the vector field (sign of the nonlinearity), any solution $\rho = \rho(r)$ of (3.3) as well as its derivative $r^{n-1}\rho'(r)$ are strictly increasing functions in a (right) neighborhood of $r = 0$, precisely as far as $\rho(r) \leq 0$. With respect to the existence of $\rho = \rho(r)$, we notice that the point $r = 0$ is a regular singularity for the equation in (3.3) (see, e.g., [14] or [13]). Precisely, this initial value problem has a unique solution, which is a holomorphic function at the point $r = 0$, that is,

$$\rho(r) = -\eta + \sum_{k=1}^{+\infty} \rho_{2k}(-\eta) r^{2k}, \quad 0 \leq r \leq \delta, \quad (3.4)$$

where the coefficients $\rho_{2k} = \rho_{2k}(-\eta)$ are given by a recurrence formulae, for example,

$$\rho_2(-\eta) = (2\lambda^2/n)(-\eta)(-\eta+1)(-\eta-\xi). \quad (3.5)$$

Remark 3.1. Although the initial condition $\lim_{r \rightarrow 0+} r^{n-1} \rho'(r) = 0$ in (3.3) seems to be weaker than the natural boundary condition $\lim_{r \rightarrow 0+} \rho'(r) = 0$ (see (1.6)), in the present situation the later follows. Indeed, since

$$\lim_{r \rightarrow 0+} \frac{(r^{n-1} \rho'(r))'}{r^{n-1}} = 4\lambda^2(-\eta+1)(-\eta)(-\eta-\xi) = \theta_0 > 0 \quad (3.6)$$

for any small enough $\varepsilon > 0$,

$$0 \leq (r^{n-1} \rho'(r))' \leq (\theta_0 + 1)r^{n-1}, \quad 0 \leq r \leq \varepsilon. \quad (3.7)$$

Hence, an integration on the interval $[0, \varepsilon]$ yields

$$\rho'(\varepsilon) \leq \frac{(\theta_0 + 1)}{n} \varepsilon, \quad (3.8)$$

that is,

$$\lim_{r \rightarrow 0+} \rho'(r) = 0. \quad (3.9)$$

LEMMA 3.2. *For any (small) $\gamma_0 > 0$, there exists an $\eta_0 \in [0, \eta]$ and $r_1 > 0$ such that the solution $\rho = \rho(r)$ of (3.3), (with η replaced by η_0) satisfies*

$$-\eta_0 \leq \rho(r) < 0, \quad \rho(r_1) = 0, \quad 0 \leq r^{n-1} \rho'(r) \leq \gamma_0, \quad 0 \leq r < r_1. \quad (3.10)$$

Proof. We assume that there is not any $r_1 > 0$ for which the first of (3.10) is fulfilled. Then, let us suppose that

$$\rho(r) \leq 0, \quad r \geq 0. \quad (3.11)$$

In view of (3.1)–(3.3) and recalling the nature of the vector field, we have

$$(r^{n-1} \rho'(r))' \geq 4\lambda^2(-\xi + \varepsilon) \rho(r) r^{n-1}, \quad 0 \leq r < +\infty. \quad (3.12)$$

Consequently, $(r^{n-1} \rho'(r))' \geq 0$, $0 \leq r < +\infty$, so $r^{n-1} \rho'(r) > 0$, $0 \leq r < +\infty$ and further this means that the solution $\rho = \rho(r)$, $0 \leq r < +\infty$ is an increasing map. Hence,

$$\lim_{r \rightarrow +\infty} \rho(r) = l \leq 0, \quad (3.13)$$

and this implies

$$\lim_{r \rightarrow +\infty} \rho'(r) = 0. \quad (3.14)$$

Now given that

$$\lim_{r \rightarrow 0+} r \rho'(r) = 0 \implies \lim_{r \rightarrow 0+} r^{n-1} \rho'(r) = 0, \quad (3.15)$$

an integration of (3.12) on the interval $[0, r]$ yields

$$r^{n-1}\rho'(r) \geq -4\lambda^2(\xi - \varepsilon) \int_0^r \rho(t)t^{n-1} dt, \quad 0 \leq r < +\infty. \quad (3.16)$$

We notice first that for $l = 0$ (by the L'Hospital's rule),

$$\lim_{t \rightarrow +\infty} t^{n-1}[-\rho(t)] = \lim_{t \rightarrow +\infty} \frac{-\rho(t)}{1/t^{n-1}} = \frac{1}{n-1} \lim_{t \rightarrow +\infty} t^n \rho'(t) = +\infty, \quad (3.17)$$

because the function $r^{n-1}\rho'(r)$ is positive and increasing. Hence,

$$\lim_{r \rightarrow +\infty} \int_0^r [-\rho(t)]t^{n-1} dt = +\infty. \quad (3.18)$$

If $l < 0$, then (3.18) is still true and further

$$\lim_{r \rightarrow +\infty} \rho'(r) \geq 4\lambda^2(\xi - \varepsilon) \lim_{r \rightarrow +\infty} \frac{\int_0^r [-\rho(t)]t^{n-1} dt}{r^{n-1}} = -\frac{4\lambda^2(\xi - \varepsilon)}{n-1} \lim_{r \rightarrow +\infty} r\rho(r) = +\infty, \quad (3.19)$$

a contradiction to (3.14). Let us now assume that $l = 0$. Then by (3.14), we have $\lim_{r \rightarrow +\infty} \rho'(r) = 0$ and then noticing (3.16),

$$\begin{aligned} 0 &= \lim_{r \rightarrow +\infty} \rho'(r) \geq -4\lambda^2(-\xi + \varepsilon) \lim_{r \rightarrow +\infty} \frac{\int_0^r [-\rho(t)]t^{n-1} dt}{r^{n-1}} \\ &= -\frac{4\lambda^2(-\xi + \varepsilon)}{n-1} \lim_{r \rightarrow +\infty} \frac{r^{n-1}[-\rho(r)]}{r^{n-2}} \\ &= -\frac{4\lambda^2(-\xi + \varepsilon)}{n-1} \lim_{r \rightarrow +\infty} \frac{\rho(r)}{1/r} = \frac{4\lambda^2(\xi - \varepsilon)}{n-1} \lim_{r \rightarrow +\infty} r^2 \rho'(r) \geq 0, \end{aligned} \quad (3.20)$$

provided that the last limit $\lim_{r \rightarrow +\infty} r^2 \rho'(r)$ exists.

In order to demonstrate this assertion, we notice first that

$$\lim_{r \rightarrow +\infty} r^{n-1}\rho'(r) = m \leq +\infty, \quad (3.21)$$

because $(r^{n-1}\rho'(r))' \geq 0$, $0 \leq r < +\infty$. Now since

$$\lim_{r \rightarrow +\infty} r^2 \rho'(r) = \lim_{r \rightarrow +\infty} \frac{r^{n-1}\rho'(r)}{r^{n-3}}, \quad (3.22)$$

we immediately get

$$\lim_{r \rightarrow +\infty} r^2 \rho'(r) = \begin{cases} m & \text{if } n = 3, \\ 0 & \text{if } n > 3, \end{cases} \quad m < +\infty. \quad (3.23)$$

So assume that $n > 3$ and $m = +\infty$. Then

$$\lim_{r \rightarrow +\infty} r^2 \rho'(r) = \lim_{r \rightarrow +\infty} \frac{(r^{n-1}\rho'(r))'}{(r^{n-3})'} = \lim_{r \rightarrow +\infty} \frac{r^{n-1}4\lambda^2(\rho(r) - 1)\rho(r)(\rho(r) - \xi)}{(n-3)r^{n-4}}, \quad (3.24)$$

given that the limit

$$\lim_{r \rightarrow +\infty} r^3 [-\rho(r)] = \lim_{r \rightarrow +\infty} \frac{[-\rho(r)]}{r^{-3}} \quad (3.25)$$

exists. One more application of the L'Hospital's rule guarantee, that (3.25) exists if

$$\lim_{r \rightarrow +\infty} r^4 \rho'(r) \quad (3.26)$$

exists too. As above

$$\lim_{r \rightarrow +\infty} r^4 \rho'(r) = \begin{cases} +\infty & \text{if } n = 3, 4, \\ m & \text{if } n = 5, \quad m < +\infty, \\ 0 & \text{if } n > 5, \end{cases} \quad (3.27)$$

For $n > 5$ and $m = +\infty$, we similarly get

$$\lim_{r \rightarrow +\infty} r^4 \rho'(r) = \lim_{r \rightarrow +\infty} \frac{r^{n-1} 4\lambda^2 (\rho(r) - 1) \rho(r) (\rho(r) - \xi)}{(n-5)r^{n-6}}, \quad (3.28)$$

given that

$$\lim_{r \rightarrow +\infty} \frac{[-\rho(r)]}{r^{-5}} \quad (3.29)$$

exists.

Continuing this procedure, we conclude that the limit $\lim_{r \rightarrow +\infty} r^2 \rho'(r)$ exists if at least one of

$$\lim_{r \rightarrow +\infty} r^{n-1} [-\rho(r)] \quad \text{or} \quad \lim_{r \rightarrow +\infty} r^{n-1} \rho'(r) \quad (3.30)$$

exists. But this is true (see (3.17) or (3.21)).

This is a contradiction if $n \leq 3$, in view of (3.16). If $n > 3$, we assert that there exists a sequence $\{r_\nu\}$ with $\lim r_\nu = +\infty$, such that $\lim r_\nu^2 \rho'(r_\nu) > 0$ and this clearly contradicts the above equality $\lim_{r \rightarrow +\infty} r^2 \rho'(r) = 0$. In order to demonstrate the last assertion, let us suppose that $\lim r_\nu^2 \rho'(r_\nu) = 0$ for any such sequence. On the other hand, we know that $\lim_{r \rightarrow +\infty} r^{n-1} \rho'(r) > 0$ and so let

$$k = \max \{m = 2, 3, \dots, n-2 : \exists r_\nu \rightarrow \infty, \lim r_\nu^m \rho'(r_\nu) = 0\}. \quad (3.31)$$

Then since $\lim_{r \rightarrow +\infty} r^{n-1} \rho'(r) > 0$, it is clear that $k \leq n-3$ and further by maximality of k , there is a subsequence of $\{r_\nu\}$, say itself such that

$$\lim r_\nu^k \rho'(r_\nu) = 0, \quad \lim r_\nu^{k+2} \rho'(r_\nu) > 0. \quad (3.32)$$

Then again (3.16) implies

$$r_\nu^k \rho'(r_\nu) \geq -4\lambda^2 (\xi - \varepsilon) \frac{1}{r_\nu^{n-1-k}} \int_0^{r_\nu} \rho(t) t^{n-1} dt, \quad 0 \leq r_\nu < +\infty, \quad (3.33)$$

and hence, given that

$$\lim_{r \rightarrow +\infty} \frac{\int_0^r [-\rho(t)] t^{n-1} dt}{r^{n-1-k}} = \frac{1}{n-1-k} \lim_{r \rightarrow +\infty} \frac{r^{n-1} [-\rho(r)]}{r^{n-2-k}}, \quad (3.34)$$

it follows that

$$\begin{aligned} 0 = \lim r_\nu^k \rho'(r_\nu) &\geq 4\lambda^2(\xi - \varepsilon) \lim \frac{\int_0^{r_\nu} [-\rho(t)] t^{n-1} dt}{r_\nu^{n-1-k}} = \frac{4\lambda^2(\xi - \varepsilon)}{n-1-k} \lim \frac{r_\nu^{n-1} [-\rho(r_\nu)]}{r_\nu^{n-2-k}} \\ &= \frac{4\lambda^2(-\xi + \varepsilon)}{n-1-k} \lim \frac{\rho'(r_\nu)}{(-k-1)r_\nu^{-k-2}} = \frac{4\lambda^2(\xi - \varepsilon)}{(n-1-k)(k+1)} \lim r_\nu^{k+2} \rho'(r_\nu) > 0, \end{aligned} \quad (3.35)$$

a contradiction.

Consequently for each $\eta_0 \in [0, \eta]$, there is an $r_{\eta_0} > 0$ such that

$$-\eta_0 \leq \rho(r) \leq 0, \quad 0 \leq r < r_{\eta_0}, \quad \rho(r_{\eta_0}) = 0. \quad (3.36)$$

Consider now the set

$$\omega_0 = \{(\rho, r^{n-1}\rho') : -\eta \leq \rho \leq 0, r^{n-1}\rho' \geq 0\} \quad (3.37)$$

and define a map $\mathcal{H}_0 : E_0 = [-\eta, 0] \times \{0\} \rightarrow 2^{\partial\omega_0}$ by the formula

$$\mathcal{H}_0(-\eta_0, 0) = (\rho(r_{\eta_0}), r_{\eta_0}^{n-1}\rho'(r_{\eta_0})). \quad (3.38)$$

Clearly the image $\mathcal{H}_0(E_0)$ is a continuum. Thus the point

$$r_\eta = \max \{r_{\eta_0} : \eta_0 \in [0, \eta]\} \quad (3.39)$$

is finite and independent η_0 .

On the other hand, by (3.2), we also have

$$(r^{n-1}\rho'(r))' \leq -4\lambda^2(\xi + \varepsilon)\rho(r)r^{n-1}, \quad 0 \leq r < r_{\eta_0} \leq r_\eta \quad (3.40)$$

and so

$$\begin{aligned} r_{\eta_0}^{n-1}\rho'(r_{\eta_0}) &\leq -4\lambda^2(\xi + \varepsilon) \int_0^{r_{\eta_0}} \rho(r)r^{n-1} dr \leq -4\lambda^2(\xi + \varepsilon)\rho(0) \int_0^{r_{\eta_0}} r^{n-1} dr \\ &= -4\lambda^2(\xi + \varepsilon) \frac{r_{\eta_0}^n}{n} \rho(0) = 4\lambda^2(\xi + \varepsilon) \frac{r_{\eta_0}^n}{n} \eta_0. \end{aligned} \quad (3.41)$$

Hence we get

$$r_{\eta_0}^{n-1}\rho'(r_{\eta_0}) \leq 4\lambda^2(\xi + \varepsilon)\eta_0 \frac{r_{\eta_0}^n}{n}, \quad (3.42)$$

that is, we may choose

$$\eta_0 \leq \min \left\{ \eta, \frac{n}{(\xi + \varepsilon)4\lambda^2 r_\eta^n} y_0 \right\} \quad (3.43)$$

and then clearly (3.10) is fulfilled. \square

LEMMA 3.3. *Consider any $\eta_1 \leq \eta$, then there is a (small enough) y_0^* such that for every positive $y_0 \leq y_0^*$ the corresponding solution $\rho = \rho(r)$ with initial value $\rho(r_1) = 0$, $r_1^{n-1}\rho'(r_1) = y_0$ satisfies*

$$0 \leq \rho(r) < \eta_1, \quad y_0 \geq r^{n-1}\rho'(r) > 0, \quad r_1 \leq r < r_2, \quad r_2^{n-1}\rho'(r_2) = 0, \quad (3.44)$$

for some $r_2 > r_1$.

Proof. Let us suppose on the contrary that an arbitrary small point y_0 exists, with

$$r^{n-1}\rho'(r) > 0, \quad r_1 \leq r < +\infty. \quad (3.45)$$

We will show there exists an $r_2 > r_1$ such that

$$\rho(r_2) = \eta_1. \quad (3.46)$$

Assume on the contrary that

$$0 \leq \rho(r) < \eta_1, \quad r \geq r_1. \quad (3.47)$$

Since the function $r^{n-1}\rho'(r)$, $r \geq r_1$, is decreasing,

$$\lim_{r \rightarrow +\infty} r^{n-1}\rho'(r) = m \geq 0. \quad (3.48)$$

Hence

$$\lim_{r \rightarrow +\infty} \rho'(r) = 0, \quad \text{and then } \lim_{r \rightarrow +\infty} \rho(r) = l \in (0, \eta_1). \quad (3.49)$$

Now in view of (3.2),

$$(r^{n-1}\rho'(r))' \leq 4\lambda^2(-\xi + \varepsilon)\rho(r)r^{n-1}, \quad r_1 \leq r < +\infty, \quad (3.50)$$

and this yields the contradiction

$$\begin{aligned} \lim_{r \rightarrow +\infty} \rho'(r) &\leq 4\lambda^2(-\xi + \varepsilon) \lim_{r \rightarrow +\infty} \frac{\int_{r_1}^r [\rho(t)]t^{n-1} dt}{r^{n-1}} - \lim_{r \rightarrow +\infty} \frac{y_0}{r^{n-1}} \\ &= \frac{4\lambda^2(-\xi + \varepsilon)}{n-1} \lim_{r \rightarrow +\infty} r\rho(r) = -\infty. \end{aligned} \quad (3.51)$$

Thus (3.46) holds.

We fix a point $\hat{y}_0 > 0$ and we will prove first that the set

$$\left\{ \begin{array}{l} r_2 > r_1 : \exists y_0 \in (0, \hat{y}_0] \text{ such that the corresponding solution with} \\ \rho(r_1) = 0, r_1^{n-1} \rho'(r_1) = y_0 \text{ satisfies (3.45)-(3.46)} \end{array} \right\} \quad (3.52)$$

is bounded, say by r_2^* . Assume on the contrary, that there exist sequences

$$\{y_{0k}\} \subset (0, \hat{y}_0], \quad \{r_{2,k}\} \text{ with } \lim r_{2,k} = +\infty \quad (3.53)$$

such that the corresponding solutions $\{\rho_k\}$ satisfy

$$0 \leq \rho_k(r) < \eta_1, \quad y_{0k} \geq r^{n-1} \rho'_k(r) > 0, \quad r_1 \leq r < r_{2,k}, \quad \rho_{2k}(r_{2,k}) = \eta_1. \quad (3.54)$$

Then by (3.2) and (3.45), we get

$$(r^{n-1} \rho'_k(r))' \leq 4\lambda^2(-\xi + \varepsilon) \rho_k(r) r^{n-1}, \quad r_1 \leq r < r_{2,k}. \quad (3.55)$$

Thus, an integration on the interval $[r_1, r_{2,k}]$ yields

$$\begin{aligned} r_{2,k}^{n-1} \rho'_k(r_{2,k}) &\leq y_{0k} + 4\lambda^2(-\xi + \varepsilon) \int_{r_1}^{r_{2,k}} \rho_k(t) t^{n-1} dt \\ &= y_{0k} + 4\lambda^2(-\xi + \varepsilon) \left[\frac{r_{2,k}^n}{n} \rho_k(r_{2,k}) - \frac{r_1^n}{n} \rho_k(r_1) - \int_{r_1}^{r_{2,k}} \frac{t^n}{n} \rho'_k(t) dt \right] \\ &\leq y_{0k} + 4\lambda^2(-\xi + \varepsilon) \frac{r_{2,k}^n}{n} \eta_1 - 4\lambda^2(-\xi + \varepsilon) y_{0k} \frac{r_{2,k}^2 - r_1^2}{2n}, \quad r \in [r_1, r_{2,k}]. \end{aligned} \quad (3.56)$$

Hence we get

$$\rho'_k(r_{2,k}) \leq \frac{y_{0k}}{r_{2,k}^{n-1}} \left[1 - 4\lambda^2(-\xi + \varepsilon) \frac{r_{2,k}^2 - r_1^2}{2n} \right] + 4\lambda^2(-\xi + \varepsilon) \frac{r_{2,k}}{n} \eta_1, \quad (3.57)$$

and then for all large k , we conclude the contradiction $\rho'_k(r_{2,k}) < 0$.

We set now

$$y_0^* = \min \left\{ \hat{y}_0, \frac{4\lambda^2(\xi - \varepsilon)(r_1^n/n) \eta_1}{1 + 4\lambda^2(\xi - \varepsilon)(r_2^{*n} - r_1^n)/2n} \right\} \quad (3.58)$$

and consider any

$$y_0 \in (0, y_0^*) \quad (3.59)$$

such that (3.45)-(3.46) are fulfilled. Then again by (3.2), we get

$$(r^{n-1} \rho'(r))' \leq 4\lambda^2(-\xi + \varepsilon) \rho(r) r^{n-1}, \quad r_1 \leq r < r_2. \quad (3.60)$$

Thus, noticing (3.58) and the definition of r_2^* , an integration on the interval $[r_1, r_2]$ yields

$$\begin{aligned}
 r_2^{n-1} \rho'(r_2) &\leq y_0 + 4\lambda^2(-\xi + \varepsilon) \int_{r_1}^{r_2} \rho(t) t^{n-1} dt \\
 &= y_{0k} + 4\lambda^2(-\xi + \varepsilon) \left[\frac{r_2^n}{n} \rho(r_2) - \frac{r_1^n}{n} \rho(r_1) - \int_{r_1}^{r_2} \frac{t^n}{n} \rho'(t) dt \right] \\
 &= y_0 + 4\lambda^2(-\xi + \varepsilon) \frac{r_2^n}{n} \eta_1 - 4\lambda^2(-\xi + \varepsilon) y_0 \frac{r_2^2 - r_1^2}{2n} \\
 &\leq y_0 \left[1 - \frac{4\lambda^2(-\xi + \varepsilon) y_0 ((r_2^{*2} - r_1^2)/2n)}{2n} \right] + 4\lambda^2(-\xi + \varepsilon) \frac{r_2^n}{n} \eta_1 \\
 &\leq y_0^* \left[1 - \frac{4\lambda^2(-\xi + \varepsilon) y_0 ((r_2^{*2} - r_1^2)/2n)}{2n} \right] + 4\lambda^2(-\xi + \varepsilon) \frac{r_1^n}{n} \eta_1.
 \end{aligned} \tag{3.61}$$

Consequently, in view of (3.58) we obtain $r_2^{n-1} \rho'(r_2) \leq 0$, a contradiction to (3.45). \square

PROPOSITION 3.4. *For any $\eta_1 \leq \eta$, there is a positive $\eta_0 \leq \eta$ such that the solution $\rho = \rho(r)$ with initial value*

$$\rho(0) = -\eta_0, \quad \lim_{r \rightarrow 0^+} r^{n-1} \rho'(r) = 0 \tag{3.62}$$

satisfies

$$-\eta_0 \leq \rho(r) < \eta_1, \quad r^{n-1} \rho'(r) \geq 0, \quad 0 < r < r_2, \quad r_2^{n-1} \rho'(r_2) = 0 \tag{3.63}$$

for some $r_2 > 0$.

Proof. By the previous Lemma 3.3, for the given η_1 , there exists a y_0^* such that for all positive $y_0 \leq y_0^*$, the solution passing through the point $(0, y_0)$ satisfies inequalities (3.44). On the other hand, in view of Lemma 3.2, there is an $\eta_0 > 0$ such that (3.10) is fulfilled. Therefore, the result follows. \square

LEMMA 3.5. *There is a $y_1 > y_0$ such that for any solution $\rho = \rho(r)$ with*

$$\rho(r_1) = 0, \quad r_1^{n-1} \rho'(r_1) = y_1 \tag{3.64}$$

for some $r_1 > 0$, there exist $0 < r_0 < r_1 < r_2$ so that

$$\begin{aligned}
 -1 &\leq \rho(r) < 0, \quad r^{n-1} \rho'(r) > 0, \quad r_0 \leq r \leq r_1, \quad \rho(r_0) = -1, \\
 0 &\leq \rho(r) < \xi, \quad r^{n-1} \rho'(r) > 0, \quad r_1 \leq r \leq r_2, \quad \rho(r_2) = \xi.
 \end{aligned} \tag{3.65}$$

Moreover, this solution is a (both sides) nonbounded strictly increasing solution, that is,

$$\lim_{r \rightarrow 0^+} \rho(r) = -\infty, \quad r^{n-1} \rho'(r) > 0, \quad r \in (0, +\infty), \quad \lim_{r \rightarrow +\infty} \rho(r) = +\infty. \tag{3.66}$$

Proof. Supposing first that $n > 2$ and that the first conclusion is false. Then for any $y_1 > y_0$,

$$-1 < \rho(r) \leq 0 \quad \forall r \in (0, r_1). \tag{3.67}$$

Now we fix any positive $r_0 < r_1$. By its definition, the nonlinearity $f(\rho)$, $-1 \leq \rho \leq \xi$ is a bounded function, namely,

$$-4\lambda^2 \leq f(\rho) \leq 4\lambda^2, \quad -1 \leq \rho \leq \xi. \quad (3.68)$$

So it follows that

$$(r^{n-1}\rho'(r))' \leq 4\lambda^2 r^{n-1}, \quad r_0 \leq r \leq r_1, \quad (3.69)$$

which in turn implies

$$r_1^{n-1}\rho'(r_1) - r^{n-1}\rho'(r) \leq 4\lambda^2 \frac{r_1^n - r^n}{n}, \quad r_0 \leq r \leq r_1, \quad (3.70)$$

Consequently, as in the precedent argument, we obtain

$$\rho(r_0) \leq -m_1 y_1 + \frac{4\lambda^2}{n} \frac{r_1^n}{2-n} \left[\frac{1}{r_1^{n-2}} - \frac{1}{r_0^{n-2}} \right] - \frac{4\lambda^2}{n} \left[\frac{r_1^2 - r_0^2}{2} \right], \quad (3.71)$$

where

$$m_1 = \frac{1}{n-2} \left[\frac{1}{r_0^{n-2}} - \frac{1}{r_1^{n-2}} \right] > 0. \quad (3.72)$$

Thus, by choosing y_1 large enough, we conclude the contradiction

$$\rho(r_0) \leq -1. \quad (3.73)$$

Similarly, let us assume that for every $y_1 > 0$ and an (also fixed) $r_2 > r_1$, it holds

$$0 \leq \rho(r) < \xi, \quad r^{n-1}\rho'(r) > 0, \quad r_1 \leq r \leq r_2, \quad r_2^{n-1}\rho'(r_2) = 0. \quad (3.74)$$

Also by 3.68, we have

$$(r^{n-1}\rho'(r))' \geq -4\lambda^2 r^{n-1}, \quad r_1 \leq r \leq r_2, \quad (3.75)$$

which implies

$$r^{n-1}\rho'(r) - r_1^{n-1}\rho'(r_1) \geq -4\lambda^2 \frac{r^n - r_1^n}{n}, \quad r_1 \leq r \leq r_2. \quad (3.76)$$

Hence, as above we obtain (recall that $n > 2$)

$$\rho(r_2) - \rho(r_1) \geq -\frac{4\lambda^2}{n} \left[\frac{r_2^2 - r_1^2}{2} - \frac{r_1^n}{2-n} \left(\frac{1}{r_2^{n-2}} - \frac{1}{r_1^{n-2}} \right) \right] + \frac{y_1}{2-n} \left[\frac{1}{r_2^{n-2}} - \frac{1}{r_1^{n-2}} \right], \quad (3.77)$$

that is, for y_1 large enough, $\rho(r_2) \geq \xi$, another contradiction. Noticing now the nature of the vector field, we conclude immediately that the obtained solution is a strictly increasing map.

In order to demonstrate (3.66), we assume that there exists $M > 0$ such that for every $y_1 > y_0$,

$$-M < \rho(r) < M, \quad \forall r \in (0, +\infty). \quad (3.78)$$

We suppose first that for any $y_1 > y_0$,

$$-M < \rho(r) \leq 0, \quad \forall r \in (0, r_1) \quad (3.79)$$

and fix any positive $r_0 < r_1$. By its definition, the nonlinearity $f(\rho)$, $-M \leq \rho \leq M$ is a bounded function, namely,

$$-K \leq f(\rho) \leq K, \quad -M \leq \rho \leq M. \quad (3.80)$$

So it follows that

$$(r^{n-1}\rho'(r))' \leq Kr^{n-1}, \quad r_0 \leq r \leq r_1, \quad (3.81)$$

which in turn implies

$$r_1^{n-1}\rho'(r_1) - r^{n-1}\rho'(r) \leq K \frac{r_1^n - r^n}{n}, \quad r_0 \leq r \leq r_1, \quad (3.82)$$

Consequently, as in the preceding argument, we obtain

$$\rho(r_0) \leq -m_1 y_1 + \frac{K}{n} \frac{r_1^n}{2-n} \left[\frac{1}{r_1^{n-2}} - \frac{1}{r_0^{n-2}} \right] - \frac{K}{n} \left[\frac{r_1^2 - r_0^2}{2} \right]. \quad (3.83)$$

where

$$m_1 = \frac{1}{n-2} \left[\frac{1}{r_0^{n-2}} - \frac{1}{r_1^{n-2}} \right] > 0. \quad (3.84)$$

Thus, by choosing y_1 large enough, we conclude the contradiction

$$\rho(r_0) \leq -M. \quad (3.85)$$

Similarly, let us assume that for every $y_1 > 0$ and an (also fixed) $r_2 > r_1$, it holds

$$0 \leq \rho(r) < M, \quad r^{n-1}\rho'(r) > 0, \quad r_1 \leq r \leq r_2, \quad r_2^{n-1}\rho'(r_2) = 0. \quad (3.86)$$

Also by (3.80), we have

$$(r^{n-1}\rho'(r))' \geq -Kr^{n-1}, \quad r_1 \leq r \leq r_2, \quad (3.87)$$

which implies

$$r^{n-1}\rho'(r) - r_1^{n-1}\rho'(r_1) \geq -K \frac{r^n - r_1^n}{n}, \quad r_1 \leq r \leq r_2. \quad (3.88)$$

Hence, as above we obtain (recall that $n > 2$)

$$\rho(r_2) - \rho(r_1) \geq -\frac{K}{n} \left[\frac{r_2^2 - r_1^2}{2} - \frac{r_1^n}{2-n} \left(\frac{1}{r_2^{n-2}} - \frac{1}{r_1^{n-2}} \right) \right] + \frac{y_1}{2-n} \left[\frac{1}{r_2^{n-2}} - \frac{1}{r_1^{n-2}} \right], \quad (3.89)$$

that is, for y_1 large enough, $\rho(r_2) \geq M$, another contradiction.

A similar argument works for the case $n = 2$ and this clearly ends the proof. \square

Remark 3.6. We notice that, since the inequality $f(\rho) = (\rho + 1)\rho(\rho - \xi) < 0$ holds true for $\rho < -1$, the map $r^{n-1}\rho'(r) > 0$, $0 < r < r_0$, is decreasing (see the nature of vector field), hence by the extendability of solutions, $\lim_{r \rightarrow 0+} r^{n-1}\rho'(r) = +\infty$ and so $\lim_{r \rightarrow 0+} \rho(r) = -\infty$. Similarly $f(\rho) > 0$, for $\rho > \xi$ and this yields $\lim_{r \rightarrow +\infty} \rho(r) = +\infty$.

Remark 3.7. Consider the solution $\rho = \rho(r)$ of the initial value problem (3.3), with (fixed) $-\eta \in (-1, 0)$ and let r_1, r_2 be two points such that

$$\begin{aligned} -\eta \leq \rho(r) < 0, \quad r^{n-1}\rho'(r) \geq 0, \quad 0 \leq r < r_1, \quad \rho(r_1) = 0, \\ \rho(r) \geq 0, \quad r^{n-1}\rho'(r) \geq 0, \quad r_1 \leq r < r_2. \end{aligned} \quad (3.90)$$

Since the graph of the function $\lim_{\xi \rightarrow 1} f(\rho) = 4\lambda^2(\rho^2 - 1)\rho$ is symmetric with respect to the $r^{n-1}\rho'$ -axis, it is clear that

$$\rho(r) < \xi, \quad r_1 \leq r < r_2, \quad (3.91)$$

for the case when ξ is close enough to 1.

Indeed, considering the initial value problem

$$\begin{aligned} (r^{n-1}\rho'(r))' &= 4\lambda^2(\rho^2 - 1)\rho r^{n-1}, \\ \rho(0) &= -\eta, \quad \lim_{r \rightarrow 0+} r^{n-1}\rho'(r) = 0, \end{aligned} \quad (3.92)$$

if we prove that $(\rho = \rho(r))$ denotes now the solution of IVP (3.92)

$$\rho(r) < \eta, \quad r \geq 0, \quad (3.93)$$

by the continuity of solutions upon the nonlinearity, at the case when $\xi \rightarrow 1-$, the boundary value problem (3.1) does not admit any solution.

Suppose in the contrary, that there exists a point $\hat{r}_2 > \hat{r}_1 = r_1$ such that

$$\rho(\hat{r}_2) = \eta, \quad 0 < m_0 = \hat{r}_2^{n-1}\rho'(\hat{r}_2) \leq \hat{r}_1^{n-1}\rho'(\hat{r}_1) = m_1. \quad (3.94)$$

Then there exist a point $\hat{r}_0 \in (0, \hat{r}_1)$ such that $\hat{r}_0^{n-1}\rho'(\hat{r}_0) = m_1$ and furthermore, for any $t \in (\hat{r}_1, \hat{r}_2)$, there is an $r \in (\hat{r}_0, \hat{r}_1)$ with

$$r^{n-1}\rho'(r) = t^{n-1}\rho'(t). \quad (3.95)$$

Since $r < t$, it follows that (for all such r and t)

$$\rho'(r) > \rho'(t). \quad (3.96)$$

Consider now a partition $\{m_0 < m_1 < \dots < m_k\}$ of the interval $[m_0, m_1]$ as well as the corresponding partitions

$$\{\hat{r}_0 = r_0 < r_1 < \dots < r_k = \hat{r}_1\}, \quad \{\hat{r}_2 = t_0 > t_1 > \dots > t_k = \hat{r}_1\} \quad (3.97)$$

of $[\hat{r}_0, \hat{r}_1]$ and $[\hat{r}_1, \hat{r}_2]$, respectively, so that

$$r_i^{n-1} \rho'(r_i) = t_i^{n-1} \rho'(t_i), \quad (i = 0, 1, \dots, k). \quad (3.98)$$

Then, of course,

$$\rho'(r_i) > \rho'(t_i), \quad (i = 0, 1, \dots, k). \quad (3.99)$$

In addition, because the map $\rho' = \rho'(t)$, $\hat{r}_0 \leq r \leq \hat{r}_2$, is continuous (and bounded), we can choose the max $\{m_i - m_{i-1} : i = 1, 2, \dots, k\}$ small enough, so that

$$\frac{t_{i+1} - t_i}{2} \rho'(t_i) \leq \frac{r_{i+1} - r_i}{2} \rho'(r_i), \quad (i = 0, 1, \dots, k-1). \quad (3.100)$$

Hence

$$\sum_{i=1}^k \frac{t_{i+1} - t_i}{2} \rho'(t_i) \leq \sum_{i=1}^k \frac{r_{i+1} - r_i}{2} \rho'(r_i), \quad (3.101)$$

and thus we obtain the contradiction

$$\eta = \rho(\hat{r}_2) = \int_{\hat{r}_1}^{\hat{r}_2} \rho'(t) dt \leq \int_{\hat{r}_0}^{\hat{r}_1} \rho'(r) dr < \int_0^{\hat{r}_1} \rho'(r) dr = -\rho(0) = \eta. \quad (3.102)$$

In conclusion, (3.93) and so (3.91) hold true. In others words, using the terminology of the previous section, for all large enough $\xi \in (0, 1)$, we have

$$\mathcal{H}(P_0) \subset E^* := \{(\rho, p\rho') \in \partial\omega : p\rho' = 0\}, \quad P_0 = (-\eta, 0). \quad (3.103)$$

On the other hand, when $\xi \rightarrow 0+$, there always exists a solution $\rho = \rho(r)$ of the IVP (3.3) such that

$$\begin{aligned} -\eta \leq \rho(r) < 0, \quad r^{n-1} \rho'(r) \geq 0, \quad 0 \leq r < r_1, \quad \rho(r_1) = 0, \\ 0 \leq \rho(r) < \xi, \quad r^{n-1} \rho'(r) > 0, \quad r_1 \leq r < r_2, \quad \rho(r_2) = \xi, \end{aligned} \quad (3.104)$$

that is,

$$\mathcal{H}(P_0) \subset E_1^* = \{(\rho, p\rho') \in \partial\omega : \rho = \xi\}. \quad (3.105)$$

THEOREM 3.8. *For every small enough $\xi \in (0, 1)$, the boundary value problem (3.1) admits (at least) one strictly increasing solution.*

Proof. In view of Proposition 3.4, for a given ξ , there is an $\eta_1^* > 0$ small enough and a solution $\rho = \rho_0(r)$ of the IVP (3.3), such that (3.103) is satisfied, with $P_0 = (-\eta_1^*, 0)$. On the other hand, since ξ is small, there exists an $\eta_0^* \in (0, 1)$ large enough and a solution $\rho = \rho_1(r)$ with

$$\begin{aligned} -\eta_0^* \leq \rho(r) < 0, \quad r^{n-1}\rho'(r) \geq 0, \quad 0 \leq r < r_1, \quad \rho(0) = -\eta_0^*, \quad \rho(r_1) = 0, \\ 0 \leq \rho(r) < \xi, \quad r^{n-1}\rho'(r) > 0, \quad r_1 \leq r < r_2, \quad \rho(r_2) = \xi \end{aligned} \quad (3.106)$$

for some positive values r_1 and r_2 of the variable r , that is, (3.105) is also fulfilled with $P_0 = (-\eta_0^*, 0)$.

Considering finally the continuum set

$$E_0 := [-\eta_0^*, -\eta_1^*] \times \{0\}, \quad (3.107)$$

we may apply Theorem 2.9 to get an $\eta \in [-\eta_0^*, -\eta_1^*]$ and the unique solution $\rho = \rho(r) \in \mathcal{X}(P)$, $P = (\eta, 0)$ of the initial value problem (3.3) such, that $\lim_{r \rightarrow +\infty} \rho(r) = \xi$. \square

Conjecture 3.9. If we know that the above obtained singular point $P = (\eta, 0)$ is unique, then by Theorem 2.9, the corresponding solution $\rho \in \mathcal{X}(P)$ is also unique. Numerical trials indicate that is true! However this actually is an open problem.

Remark 3.10. The above obtained solution of the boundary value problem (3.1), transferring via the transformation given above of (1.8), clearly gives a positive solution $\rho = \rho(r)$ of our problem (1.5)–(1.7), that is,

$$0 < \rho_1 < \rho(r) < \rho_l, \quad 0 < r < +\infty. \quad (3.108)$$

THEOREM 3.11. *A unique $\xi_M \in (0, 1)$ exists such that the terminal value problem*

$$\begin{aligned} \frac{1}{r^{n-1}}(r^{n-1}\rho'(r))' &= 4\lambda^2(\rho+1)\rho(\rho-\xi_M) := f(\rho), \\ \lim_{r \rightarrow 0+} \rho(r) &= -1, \quad \lim_{r \rightarrow +\infty} \rho(r) = \xi_M \end{aligned} \quad (3.109)$$

admits at least one strictly increasing solution.

Furthermore, the point $\xi_M \in (0, 1)$ is the maximal one in the sense that, for every $\xi > \xi_M$, the boundary value problem (3.1) does not admit any solution.

Proof. We consider a fixed $\xi \in (0, 1)$ and notice Lemma 3.2. Then for any (small) $y_0 > 0$ there exists an $\eta_0 \in [0, 1)$ and $r_1 > 0$ such that the solution of IVP

$$\begin{aligned} \frac{1}{r^{n-1}}(r^{n-1}\rho'(r))' &= 4\lambda^2(\rho+1)\rho(\rho-\xi), \\ \rho(0) &= -\eta_0, \quad \lim_{r \rightarrow 0+} r^{n-1}\rho'(r) = 0 \end{aligned} \quad (3.110)$$

satisfies

$$-\eta_0 \leq \rho(r) < 0, \quad \rho(r_1) = 0, \quad 0 \leq r^{n-1}\rho'(r) \leq y_0, \quad 0 \leq r < r_1. \quad (3.111)$$

In view of Lemma 3.5, there is a $y_1 > y_0$ such that the solution $\rho = \rho(r)$ which satisfies $\rho(r_1) = 0$ and $r_1^{n-1}\rho'(r_1) = y_1$, for some $r_1 > 0$, there exists an $r_0 \in (0, r_1)$ such that

$$-1 \leq \rho(r) < 0, \quad r^{n-1}\rho'(r) > 0, \quad r_0 \leq r \leq r_1, \quad \rho(r_0) = -1. \quad (3.112)$$

Consider the continuum

$$E_0 = \{0\} \times [y_0, y_1] \quad (3.113)$$

in the domain

$$\Omega := \{(\rho, \rho') : -1 \leq \rho \leq 0, \quad r^{n-1}\rho' \geq 0\}. \quad (3.114)$$

By the sign property of the nonlinearity (nature of the vector field), it is clear that every solution $\rho \in \mathcal{X}(E_0)$ extended backwards is a strictly increasing function. Therefore, by the fundamental continuation theorem, we can define a map

$$\mathcal{H}^* : E_0 \longrightarrow 2^{\partial\Omega}, \quad (3.115)$$

analogously with the similarly defined one above, by

$$\mathcal{H}^*(P) := \{(\rho(r_0), r_0^{n-1}\rho'(r_0)) \in \partial\Omega : \rho \in \mathcal{X}(P), \quad P = (0, y) \in E_0\}, \quad (3.116)$$

for some $r_0 \in (0, r_1)$. Consider the subsets

$$E_{-1}^* = \{(\rho, r^{n-1}\rho') \in \partial\Omega : \rho = -1\}, \quad E_* := \{(\rho, r^{n-1}\rho') \in \partial\Omega : r^{n-1}\rho' = 0\} \quad (3.117)$$

of Ω , and notice that both sets

$$\mathcal{H}^*(E_0) \cap E_{-1}^*, \quad \mathcal{H}^*(E_0) \cap E_* \quad (3.118)$$

are nonempty connected subsets of the boundary $\partial\Omega$. Consequently, in view of Lemma 2.6, we must have

$$\partial(\mathcal{H}^*(E_0) \cap E_*) \cap E_{-1}^* = \{(-1, 0)\} \neq \emptyset. \quad (3.119)$$

This means that there exists a singular point $P \in E_0$ of the map \mathcal{H}^* , that is, there is a solution $\rho = \rho(r) \in \mathcal{X}(P)$ which remains left asymptotic in Ω and so it satisfies the left asymptotic relations in (3.109).

Finally, noticing Remark 3.7, for the case where $\xi = \xi_1$ is close enough to the right end of the interval $(0, 1)$, there is an $r_2 > 0$ such that

$$0 \leq \rho_1(r) < \xi_1, \quad r^{n-1}\rho'_1(r) \geq 0, \quad r_1 \leq r \leq r_2, \quad r_2^{n-1}\rho'_1(r_2) = 0, \quad (3.120)$$

and mainly $\rho_1(r_2) < \xi_1$, where $\rho = \rho_1(r)$ is a solution of the equation in (3.109), with ξ_M replaced by ξ_1 such that $\lim_{r \rightarrow 0+} \rho_1(r) = -1$.

On the other hand, there exists a $\xi_0 < \xi_1$ such that (now $\rho = \rho_0(r)$ is a solution of the equation in (3.109), with ξ_M replaced by ξ_0 and the new r_2 generally different by the above one)

$$\lim_{r \rightarrow 0+} \rho_0(r) = -1, \quad \rho_0(r_2) = \xi_0, \quad r^{n-1}\rho'_0(r) > 0, \quad 0 < r \leq r_2 \quad (3.121)$$

for (at least) one such solution. This is obvious, since for $\xi = 0$, the nonlinearity $f(\rho) = 4\lambda^2(\rho + 1)\rho^2 > 0$, $\rho \geq -1$, that is, the function $r^{n-1}\rho'(r)$ is strictly increasing and thus $\lim_{r \rightarrow +\infty} \rho(r) = +\infty$.

Now we set $\xi_0 = \xi_{00}$, $\xi_1 = \xi_{10}$, and

$$\frac{\xi_{00} + \xi_{10}}{2} = \begin{cases} \xi_{01} & \text{if the analogous of (3.121) with respect to} \\ & \frac{\xi_{00} + \xi_{10}}{2} \text{ instead of } \xi_0 \text{ holds true,} \\ \xi_{11} & \text{if the analogous of (3.120) with respect to} \\ & \frac{\xi_{00} + \xi_{10}}{2} \text{ instead of } \xi_1 \text{ holds true.} \end{cases} \quad (3.122)$$

This definition of ξ_{01} and ξ_{11} is well posed because, since the function $r^{n-1}\rho'(r)$ is decreasing on $[r_1, r_2]$ and $\rho = \rho(r)$ is an increasing one on $[r_1, r_2]$, we may apply the usual continuation theorem to guarantee that there is not other case. We repeat this procedure replacing the interval $[\xi_{01}, \xi_{10}]$ or $[\xi_{00}, \xi_{11}]$, according to (3.121) or (3.120), with $[\xi_{01}, \xi_{11}]$ to get a second interval $[\xi_{02}, \xi_{12}]$ with same as $[\xi_{01}, \xi_{11}]$ properties and so forth and finally we can obtain sequences $\{\xi_{0n}\}$ and $\{\xi_{1n}\}$ such that

$$\lim \xi_{0n} = \lim \xi_{1n} = \xi_M. \quad (3.123)$$

By the construction of $\{\xi_{in}\}$ ($i = 0, 1$) and the definition of ξ_M , we conclude that the BVP (3.109) is solvable.

The last result for the maximality of $\xi_M \in (0, 1)$ follows by the monotonicity of $\{\xi_{in}\}$. \square

Remark 3.12. If the singular point P_0 of the map \mathcal{H}^* is unique, then the uniqueness of the point ξ_M and the uniqueness of solutions with respect to their initial data function $\rho_M(r)$ yield the uniqueness of the above obtained solution $\rho = \rho_M(r)$, $0 < r < +\infty$. This remains also an open problem. Some monotonicity assumptions on the nonlinearity, possibly, are sufficient for that.

4. A numerical approach

By the previous and especially in view of Theorems 3.8 and 3.11, it is obvious that we cannot find out theoretically the maximal point ξ_M and (then an initial one) ρ_0 such that the BVP (3.1) admits an increasing solution. But if we know that for some ξ^* there is an initial point ρ_0^* such that the corresponding solution $\rho = \rho(r)$ satisfies for some $r_1 > 0$,

$$\rho(0) = \rho_0^*, \quad \rho_0^* < \rho(r) < \xi^*, \quad r^{n-1}\rho'(r) > 0, \quad 0 < r < r_1, \quad \rho(r_1) = \xi^*, \quad (4.1)$$

then we can approximate numerically the solution of (3.1), for every $\xi \in (0, \xi^*]$, using the NDSolve command of MATHEMATICA and applying the shooting method. So, we restrict our consideration in the sequel for the case $n = 3$ and $\lambda = 1$. Precisely, by the series expression (3.4)-(3.5) of the solutions, we may use as initial values

$$\rho(r_0) = \rho_0, \quad r_0^{n-1}\rho'(r_0) = (4/3)r_0^n\lambda^2(\rho_0 + 1)\rho_0(\rho_0 - \xi), \quad (4.2)$$

for a small enough r_0 . In this way for $r_0 = 0.01$, and $\xi = 0.6616$, $\rho_0 = -0.999112$ or $\xi = 0.6617$, $\rho_0 = -0.999112$, we obtained the two curves on the phase plane $(\rho, r^{n-1}\rho')$, respectively, (see Figures 2.1 and 2.2). We notice that at the first case the relations

$$\rho(0) = \rho_0, \quad \rho_0 < \rho(r) < \xi, \quad r^{n-1}\rho'(r) > 0, \quad 0 < r < r_1, \quad \rho(r_1) = \xi, \quad (4.3)$$

are fulfilled, while at the second one, we have

$$\rho(0) = \rho_0, \quad \rho_0 \leq \rho(r) < \xi, \quad r^{n-1}\rho'(r) \geq 0, \quad 0 \leq r \leq r_1, \quad r_1^{n-1}\rho'(r_1) = 0. \quad (4.4)$$

Following the same technique, we get the next two Figures 2.3 and 2.4 and notice that in view of the last one, it seems that $\xi = 0.83428 \simeq \xi_M$ is a “good” approximation of the extreme (existence) point ξ_M according to Theorem 3.11.

We notice finally, for the convenience of the reader, that we have used the next NDSolve command of MATHEMATICA:

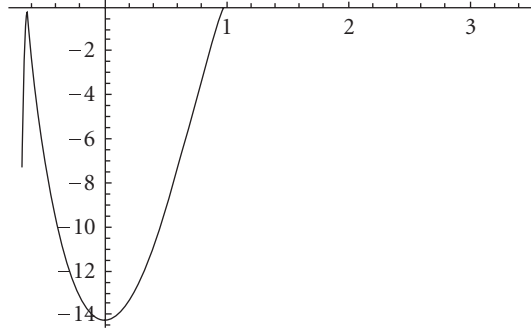
$$\xi = 0.8; \quad \rho_0 = -0.9999997; \quad r_0 = 0.01; \quad \rho'_0 = (4/3)(\rho_0 + 1)\rho_0(\rho_0 - \xi)r_0^3;$$

solution

$$\begin{aligned} &= \text{NDSolve} [\{p'_1[r] = p_2[r], \quad r^2 p'_2[r] + 2r p_2[r] = 4r^2(p_1[r] + 1)p_1[r](p_1[r] - \xi), \\ &\quad p_1[r_0] = \rho_0, r_0^2 p_2[r_0] = \rho_0\}, \{p_1[r], p_2[r]\}, \{r, 0.1, 12\}, \text{MaxSteps} \rightarrow 10^3]. \end{aligned}$$

$$\text{ParametricPlot} [\text{Evaluate} [\{p_1[r], r^2 p_2[r]\} /. \text{solution}], \{r, 0, 12\}]. \quad (4.5)$$

Remark 4.1. Following the same technique, we may prove the following existence result (see Figure 4.1).

Figure 4.1. ($\rho_0 \simeq 0.999112$, $\xi \simeq -0.6372$).

There is a minimum $\xi_m \in (-1, 0)$ such that for every $\xi \in (\xi_m, 0)$, there exists a $\rho_0 \in (0, 1)$ such that the solution $\rho \in \mathcal{X}(P_0)$, $P_0 = (\rho_0, 0)$ of the IVP

$$\begin{aligned} \frac{1}{r^{n-1}} (r^{n-1} \rho'(r))' &= 4\lambda^2 (\rho - 1) \rho (\rho - \xi), \\ \lim_{r \rightarrow 0+} r^{n-1} \rho'(r) &= 0, \quad \rho(0) = \rho_0 \end{aligned} \quad (4.6)$$

is a strictly decreasing function, which satisfies

$$\lim_{r \rightarrow +\infty} r^{n-1} \rho'(r) = 0, \quad \lim_{r \rightarrow +\infty} \rho(r) = \xi. \quad (4.7)$$

Furthermore, there exists a strictly decreasing solution ρ_m of the terminal value problem

$$\begin{aligned} \frac{1}{r^{n-1}} (r^{n-1} \rho'(r))' &= 4\lambda^2 (\rho - 1) \rho (\rho - \xi_m), \\ \lim_{r \rightarrow 0+} \rho(r) &= 1, \quad \lim_{r \rightarrow +\infty} \rho(r) = \xi_m. \end{aligned} \quad (4.8)$$

Also, there is a (monoparametric) family of strictly decreasing solutions

$$\lim_{r \rightarrow 0+} \rho(r) = +\infty, \quad r^{n-1} \rho'(r) < 0, \quad -\infty < r < +\infty, \quad \lim_{r \rightarrow +\infty} \rho(r) = -\infty. \quad (4.9)$$

Finally by Proposition 3.4 and taking into account Remark 3.7, we presume (Figure 4.2).

Conjecture 4.2. For any $\xi \in (0, 1)$, there is a maximal $\rho_{0M} \in (0, 1)$ such that the solution of IVP

$$\begin{aligned} \frac{1}{r^{n-1}} (r^{n-1} \rho'(r))' &= 4\lambda^2 (\rho + 1) \rho (\rho - \xi) := f(\rho), \\ \lim_{r \rightarrow 0+} r^{n-1} \rho'(r) &= 0, \quad \lim_{r \rightarrow 0} \rho(r) = \rho_0, \end{aligned} \quad (4.10)$$

with $0 < \rho_0 < \rho_{0M}$, is oscillating and asymptotically stable, that is, $\lim_{r \rightarrow +\infty} \rho(r) = 0$.

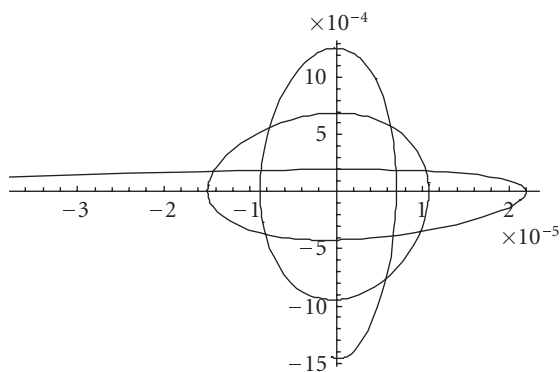


Figure 4.2. ($\rho_0 \simeq -0.0001$, $\xi \simeq 0.6597253$).

Acknowledgment

We thank referees for their careful reading and deep understanding of this paper, as well as for their significant comments, which helped us to improve the manuscript considerably.

References

- [1] R. P. Agarwal and I. Kiguradze, *Two-point boundary value problems for higher-order linear differential equations with strong singularities*, Boundary Value Problems **2006** (2006), Article ID 83910, 32 pages.
- [2] J. V. Baxley, *Boundary value problems on infinite intervals*, Boundary Value Problems for Functional-Differential Equations (J. Henderson, ed.), World Scientific, New Jersey, 1995, pp. 49–62.
- [3] H. Berestycki, P.-L. Lions, and L. A. Peletier, *An ODE approach to the existence of positive solutions for semilinear problems in \mathbf{R}^N* , Indiana University Mathematics Journal **30** (1981), no. 1, 141–157.
- [4] D. Bonheure, J. M. Gomes, and L. Sanchez, *Positive solutions of a second-order singular ordinary differential equation*, Nonlinear Analysis **61** (2005), no. 8, 1383–1399.
- [5] W. A. Copel, *Stability and Asymptotic Behavior of Differential Equations*, Heath, Massachusetts, 1965.
- [6] F. Dell’Isola, H. Gouin, and G. Rotoli, *Nucleation of spherical shell-like interfaces by second gradient theory: numerical simulations*, European Journal of Mechanics. B. Fluids **15** (1996), no. 4, 545–568.
- [7] F. Gazzola, J. Serrin, and M. Tang, *Existence of ground states and free boundary problems for quasilinear elliptic operators*, Advances in Differential Equations **5** (2000), no. 1–3, 1–30.
- [8] K. Kuratowski, *Topology II*, Academic Press, New York, 1968.
- [9] P. K. Palamides, *Singular points of the consequent mapping*, Annali di Matematica Pura ed Applicata. Serie Quarta **129** (1981), 383–395 (1982).
- [10] ———, *Boundary-value problems for shallow elastic membrane caps*, IMA Journal of Applied Mathematics **67** (2002), no. 3, 281–299.
- [11] P. K. Palamides and G. N. Galanis, *Positive, unbounded and monotone solutions of the singular second Painlevé equation on the half-line*, Nonlinear Analysis **57** (2004), no. 3, 401–419.
- [12] Y. Rocard, *Thermodynamique*, chapter 5, Masson, Paris, 1967.

- [13] W. Walter, *Ordinary Differential Equations*, Graduate Texts in Mathematics, vol. 182, Springer, New York, 1998.
- [14] W. Wasov, *Asymptotic Expressions for Ordinary Differential Equations*, John Wiley & Sons, New York, 1965.

Alex P. Palamides: Department of Telecommunications Science and Technology,
University of Peloponnesse, 22100 Tripolis, Greece
E-mail address: palamid@uop.gr

Theodoros G. Yannopoulos: Department of Mathematics, Technological Educational Institute (TEI)
of Athens, 12210 Egaleo, Greece
E-mail address: thyann@teiath.gr

Special Issue on Intelligent Computational Methods for Financial Engineering

Call for Papers

As a multidisciplinary field, financial engineering is becoming increasingly important in today's economic and financial world, especially in areas such as portfolio management, asset valuation and prediction, fraud detection, and credit risk management. For example, in a credit risk context, the recently approved Basel II guidelines advise financial institutions to build comprehensible credit risk models in order to optimize their capital allocation policy. Computational methods are being intensively studied and applied to improve the quality of the financial decisions that need to be made. Until now, computational methods and models are central to the analysis of economic and financial decisions.

However, more and more researchers have found that the financial environment is not ruled by mathematical distributions or statistical models. In such situations, some attempts have also been made to develop financial engineering models using intelligent computing approaches. For example, an artificial neural network (ANN) is a nonparametric estimation technique which does not make any distributional assumptions regarding the underlying asset. Instead, ANN approach develops a model using sets of unknown parameters and lets the optimization routine seek the best fitting parameters to obtain the desired results. The main aim of this special issue is not to merely illustrate the superior performance of a new intelligent computational method, but also to demonstrate how it can be used effectively in a financial engineering environment to improve and facilitate financial decision making. In this sense, the submissions should especially address how the results of estimated computational models (e.g., ANN, support vector machines, evolutionary algorithm, and fuzzy models) can be used to develop intelligent, easy-to-use, and/or comprehensible computational systems (e.g., decision support systems, agent-based system, and web-based systems)

This special issue will include (but not be limited to) the following topics:

- **Computational methods:** artificial intelligence, neural networks, evolutionary algorithms, fuzzy inference, hybrid learning, ensemble learning, cooperative learning, multiagent learning

- **Application fields:** asset valuation and prediction, asset allocation and portfolio selection, bankruptcy prediction, fraud detection, credit risk management
- **Implementation aspects:** decision support systems, expert systems, information systems, intelligent agents, web service, monitoring, deployment, implementation

Authors should follow the Journal of Applied Mathematics and Decision Sciences manuscript format described at the journal site <http://www.hindawi.com/journals/jamds/>. Prospective authors should submit an electronic copy of their complete manuscript through the journal Manuscript Tracking System at <http://mts.hindawi.com/>, according to the following timetable:

Manuscript Due	December 1, 2008
First Round of Reviews	March 1, 2009
Publication Date	June 1, 2009

Guest Editors

Lean Yu, Academy of Mathematics and Systems Science, Chinese Academy of Sciences, Beijing 100190, China; Department of Management Sciences, City University of Hong Kong, Tat Chee Avenue, Kowloon, Hong Kong; yulean@amss.ac.cn

Shouyang Wang, Academy of Mathematics and Systems Science, Chinese Academy of Sciences, Beijing 100190, China; sywang@amss.ac.cn

K. K. Lai, Department of Management Sciences, City University of Hong Kong, Tat Chee Avenue, Kowloon, Hong Kong; mskkklai@cityu.edu.hk