

SHEAR-FREE BOUNDARY IN STOKES FLOW

D. PALANIAPPAN*, S. D. NIGAM and T. AMARANATH

School of Mathematics & C.I.S.
University of Hyderabad
Hyderabad - 500 134, INDIA

*Department of Mathematics
Indian Institute of Science
Bangalore - 560 012, INDIA

(Received March 31, 1993)

ABSTRACT. A theorem of Harper for axially symmetric flow past a sphere which is a stream surface, and is also shear-free, is extended to flow past a doubly-body \mathfrak{B} consisting of two unequal, orthogonally intersecting spheres. Several illustrative examples are given. An analogue of Faxen's law for a double-body is observed.

KEY WORDS AND PHRASES. Shear-free, axisymmetric flow, double-body, impervious, image, bubble, drag.

1991 AMS SUBJECT CLASSIFICATION CODE(S). 76D05.

1. INTRODUCTION.

In Stokes' flow, no-slip circle theorems for two dimensional and sphere theorems for axisymmetric flows have been proved ([1], [2], [3], [6], [7], [9]). Recently, Harper [5] has proved the following theorem for axisymmetric flows in which a sphere is a stream surface and is also shear-free.

THEOREM. If $\psi(r, \theta)$ is the Stokes' stream function of an axially symmetric steady slow viscous flow with no singularities on the sphere $r = a$, then so is

$$\psi_1(r, \theta) = \psi(r, \theta) - (r^3/a^3) \psi(a^2/r, \theta)$$

(r, θ) being spherical polar coordinates and the fluid motion described by ψ_1 , has the sphere $r = a$ as a shear-free stream surface for which

$$\psi_1 = 0 \text{ and } \frac{\partial}{\partial r} \left(r^{-2} \frac{\partial \psi_1}{\partial r} \right) = 0.$$

The term $-(r^3/a^3) \psi(a^2/r, \theta)$ is defined to be the image of $\psi(r, \theta)$ in the sphere $r = a$. In the special case when $\psi(r, \theta) = \frac{U}{2} r^2 \sin^2 \theta$, the theorem gives

$$\psi_1(r, \theta) = \frac{U}{2} r^2 \sin^2 \theta - \frac{U}{2} a r \sin^2 \theta.$$

This is the stream function for the flow past a shear-free sphere, Rybczynski-Hadamard [4].

In this note, we have proved a theorem which may be considered as an extension of Harper's result when the flow is axisymmetric and takes place outside a double-body \mathfrak{B} , formed by two

orthogonally intersecting unequal spheres, which is impervious and shear-free. Several illustrative examples are given and in each case the drag on the double-body is calculated. A result which is an analogue of Faxen's law [4] for a double-body is observed. We also consider a pair of spherical bubbles intersecting orthogonally and rising steadily in a viscous fluid. The drag on this system is calculated and compared with Harper's result for two equal spherical bubbles touching each other and rising in a viscous fluid.

A theorem for axisymmetric inviscid flow past a double-body has also been proved by the authors [8].

2. THE DOUBLE-BODY \mathfrak{B} .

Consider a double-body \mathfrak{B} (Fig. 1) formed by two unequal spheres S_a and S_b of radii 'a' and 'b' intersecting orthogonally, with centres O and O' respectively. In the right-angled triangle $OA'O'$, $c^2 = a^2 + b^2$ where $OO' = c$. In the meridian plane, join AB to intersect OO' in D ; then $OD = \frac{a^2}{c}$, $DO' = \frac{b^2}{c}$, $DA = DB = \frac{ab}{c}$ and D is inverse point of the centres O and O' with respect to the spheres S_a and S_b respectively. Also, we have

$$r'^2 = r'^2 + 2 cr' \cos \theta + c^2, \quad (2.1)$$

$$r'^2 = r^2 - 2 cr \cos \theta + c^2, \quad (2.2)$$

$$R^2 = r^2 - 2 \frac{a^2}{c} r \cos \theta + \frac{a^4}{c^2} \quad (2.3)$$

$$= r'^2 + 2 \frac{b^2}{c} r' \cos \theta + \frac{b^4}{c^2}. \quad (2.4)$$

Using (2.1)-(2.4) we have

$$r' = \frac{c}{a} R, \quad \text{on } r = a, \quad (2.5)$$

$$r = \frac{c}{b} R, \quad \text{on } r' = b. \quad (2.6)$$

3. FORMULATION OF THE PROBLEM.

We consider steady flow of an incompressible viscous fluid past a shear-free double-body \mathfrak{B} formed by two unequal spheres of radii 'a' and 'b' intersecting orthogonally. Let (r, θ, ϕ) , (R, Θ, Φ) and (r', θ', ϕ) be the spherical polar coordinates of a point P with respect to O, D, O' respectively (Fig. 1). It is well-known that in a steady, axisymmetric Stokes flow the stream function $\psi(r, \theta)$ satisfies

$$D^4 \psi = 0 \quad (3.1)$$

where

$$D^2 = \frac{\partial^2}{\partial r^2} + \frac{1 - \eta^2}{r^2} \frac{\partial^2}{\partial \eta^2}, \quad \eta = \cos \theta \quad (3.2a)$$

$$= \frac{\partial^2}{\partial \omega^2} + \frac{1}{\omega} \frac{\partial}{\partial \omega} \frac{\partial^2}{\partial z^2}, \quad \omega = r \sin \theta, \quad z = r \cos \theta \quad (3.2b)$$

(ω, z, ϕ) being the cylindrical coordinates of P with respect to O . Since z does not occur explicitly in the operator D^2 given by equation (3.2b), it is form invariant under a translation of origin along the z -axis. We observe that:

(A) **Inversion:** If $\psi(r, \theta)$ is a solution of (3.1), then $(r/a)^3 \psi(a^2/r, \theta)$ is also a solution.

(B) **Reflection:** If $\psi(\omega, z)$ is a solution of (3.1), then $\psi(\omega, -z)$ is also a solution.

(C) **Translation of origin:** If $\psi(\omega, z)$ is a solution of (3.1), then $\psi(\omega, z + h)$, where h is a constant, is also a solution.

We take z -axis as the axis of symmetry, and (ω, z) , (ω', z') , (Π, Z) as the cylindrical

coordinates of P with respect to O, O', D , respectively.

THEOREM. Let $\psi_0(\omega, z)$ be the Stokes stream function for an axisymmetric motion of a viscous fluid in the unbounded region all of whose singularities being outside the double-body \mathfrak{B} formed by two orthogonally intersecting unequal, impervious, shear-free spheres, and suppose $\psi_0(\omega, z) = o(r^2)$ at the origin. When the shear-free boundary \mathfrak{B} is introduced, the stream function for the fluid external to this boundary is

$$\begin{aligned} \psi(\omega, z) = & \psi_0(\omega, z) - (r/a)^3 \psi_0\left(\frac{a^2\omega}{r^2}, \frac{a^2z}{r^2}\right) \\ & - (r'/b)^3 \psi_0\left(\frac{b^2\omega'}{r'^2}, c + \frac{b^2z'}{r'^2}\right) \\ & + (cR/ab)^3 \psi_0\left(\frac{a^2b^2}{c^2R^2} \Pi, \frac{a^2(R^2 - (b^2Z/c))}{cR^2}\right). \end{aligned} \quad (3.3)$$

The second and third terms on the right hand side of (3.3) are the images of $\psi_0(\omega, z)$ with respect to the spheres S_a and S_b respectively and the last term is the image of

$$(-r'/b)^3 \psi_0\left(\frac{b^2\omega'}{r'^2}, c + \frac{b^2z'}{r'^2}\right)$$

in the sphere S_a .

PROOF. The conditions to be satisfied by the function ψ given in (3.3) are that

(i) the perturbation terms in (3.3) viz the 2^{nd} , 3^{rd} and the 4^{th} terms must be solutions of (3.1);

(ii) $\psi = 0 = \frac{\partial}{\partial r} \left(r^{-2} \frac{\partial \psi}{\partial r} \right)$, on S_a and $\psi = 0 = \frac{\partial}{\partial r'} \left(r'^{-2} \frac{\partial \psi}{\partial r'} \right)$ on S_b thus making \mathfrak{B} a stress-free stream surface;

(iii) the singularities of the perturbation terms must lie inside the double-body \mathfrak{B} ;

(iv) the perturbation velocity must vanish as $r \rightarrow \infty$.

By virtue of (A), (B), (C), the perturbation terms in (3.3) are the solutions of (3.1) and hence condition (i) is satisfied.

It can be shown that the expression given by (3.3) satisfy the boundary conditions on \mathfrak{B} and therefore (ii) is satisfied.

Further, if a singularity of $\psi_0(\omega, z)$ exists at E outside \mathfrak{B} , then all the singularities of the perturbation terms will lie inside \mathfrak{B} (see the Appendix) and condition (iii) is satisfied.

Finally, since $\psi_0(\omega, z) = o(r^2)$ at the origin, the perturbation terms in (3.3) are at most of order $o(r)$ for large r . Hence, the perturbation velocity tends to zero as $r \rightarrow \infty$, and the condition (iv) is also satisfied.

4. ILLUSTRATIVE EXAMPLES.

(I) Uniform flow past \mathfrak{B}

The stream function for the uniform flow along Oz is

$$\psi_0(r, \theta) = \frac{1}{2} U r^2 \sin^2 \theta.$$

When the shear-free double-body \mathfrak{B} is introduced in the flow field, then the modified stream function becomes (Using (3.3))

$$\psi(r, \theta) = \frac{1}{2} U r^2 \sin^2 \theta - \frac{1}{2} U a r \sin^2 \theta - \frac{1}{2} U b r' \sin^2 \theta' + \frac{1}{2} U \frac{ab}{c} R \sin^2 \Theta \quad (4.1)$$

Thus the image system of uniform flow at infinity consists of three Stokeslets of strengths

$4\pi\mu Ua$, $4\pi\mu Ub$, $-4\pi\mu U \frac{ab}{c}$ located at O , O' , and D respectively. The drag on the double-body in this case is found to be

$$\begin{aligned} \mathbf{F} &= 4\pi\mu U(a + b - \frac{ab}{c}) \hat{\mathbf{k}} \\ &= 4\pi\mu \left([aq_0]_O + [bq_0]_{O'} - [\frac{ab}{c} q_0]_D \right) \end{aligned} \quad (4.2)$$

where q_0 represents the velocity of the undisturbed flow and the subscripts outside the square brackets indicate the evaluation at those points respectively.

Putting $b = 0$ in (4.2), we get the drag on a single shear-free sphere.

(II). Quadratic flow

In this case

$$\psi_0(r, \theta) = r^3 \sin^2 \theta \cos \theta,$$

and by applying the theorem we obtain

$$\begin{aligned} \psi(r, \theta) &= r^3 \sin^2 \theta \cos \theta - a^3 \sin^2 \theta \cos \theta - b^3 \sin^2 \theta' \cos \theta' \\ &\quad - bcr' \sin^2 \theta' + \frac{a^3 b^3}{c^3} \sin^2 \Theta \cos \Theta \\ &\quad + \frac{a^3 b}{c^2} R \sin^2 \Theta \end{aligned} \quad (4.3)$$

The image system consists of a Stokes-doublet at O ; a Stokeslet and a Stokes-doublet at O' ; a Stokeslet and a Stokes-doublet at D . The drag is given by

$$\begin{aligned} \mathbf{F} &= 8\pi\mu \frac{b(a^3 - c^3)}{c^2} \hat{\mathbf{k}} \\ &= 4\pi\mu \left([aq_0]_O + [bq_0]_{O'} - [\frac{ab}{c} q_0]_D \right). \end{aligned} \quad (4.4)$$

Putting $b = 0$, the drag on a single shear-free sphere $r = a$ with centre at O is zero, while putting $a = 0$, $\mathbf{F} = -8\pi\mu bc$.

(III) Stokeslet outside \mathfrak{B}

Consider a Stokeslet of strength $F_3/8\pi\mu$, located at $E(0, 0, -d)$ outside \mathfrak{B} on the axis of symmetry. The stream function due to the Stokeslet in an unbounded fluid is

$$\psi_0(r, \theta) = \frac{F_3}{8\pi\mu} r_1 \sin^2 \theta_1.$$

where (r_1, θ_1, ϕ) are the polar coordinates of P with E as the origin (Fig. 1). Using the theorem, we obtain

$$\begin{aligned} \psi(r, \theta) &= \frac{F_3}{8\pi\mu} \left[r_1 \sin^2 \theta_1 - \frac{a}{d} r_2 \sin^2 \theta_2 - \frac{b}{(c+d)} r_3 \sin^2 \theta_3 \right. \\ &\quad \left. - \frac{ab}{(a^2 + cd)} r_4 \sin^2 \theta_4 \right] \end{aligned} \quad (4.5)$$

where (r_2, θ_2, ϕ) and (r_3, θ_3, ϕ) are the spherical polar coordinates of P with E_a and E_b as origin, which are the inverse points of E with respect to S_a and S_b respectively and (r_4, θ_4, ϕ) are the spherical polar coordinates of P with respect to E_{ba} ; the inverse point of E_b in the sphere S_a . The image system consists of three Stokeslets of strengths $-\frac{F_3}{8\pi\mu} \frac{a}{d}$, $-\frac{F_3}{8\pi\mu} \frac{b}{(c+d)}$, $\frac{F_3}{8\pi\mu} \frac{ab}{(a^2 + cd)}$ located at E_a , E_b and E_{ba} respectively inside \mathfrak{B} . The drag on \mathfrak{B} is found to be

$$\mathbf{F} = F_3 \left(\frac{a}{d} + \frac{b}{(c+d)} - \frac{ab}{(a^2 + cd)} \right) \hat{\mathbf{k}}$$

$$= 4\pi\mu \left([a\mathbf{q}_0]_O + [b\mathbf{q}_0]_{O'} - \left[\frac{ab}{c}\mathbf{q}_0\right]_D \right). \quad (4.6)$$

(IV) Potential-Doublet outside \mathfrak{B}

Consider a potential-doublet of strength α located at $E(0,0,-d)$ outside \mathfrak{B} on the axis of symmetry. The stream function due to a potential-doublet in an unbounded fluid is

$$\psi_0(r, \theta) = \alpha \frac{\sin^2 \theta_1}{r_1}.$$

Applying the theorem we get

$$\begin{aligned} \psi(r, \theta) = & \alpha \left[\frac{\sin^2 \theta_1}{r_1} - \frac{a}{d^3} \left(r_2 - 2 \frac{a^2}{d} \cos \theta_2 + \frac{a^4}{d^2 r_2} \right) \sin^2 \theta_2 \right. \\ & - \frac{b}{(c+d)^3} \left(r_3 - \frac{2b^2}{c+d} \cos \theta_3 + \frac{b^4}{(c+d)^2 r_3} \right) \sin^2 \theta_3 \\ & + \frac{ab}{(a^2+cd)^3} \left(c^2 r_4 + \frac{2a^2 b^2 c}{(a^2+cd)} \cos \theta_4 \right. \\ & \left. \left. + \frac{a^4 b^4}{(a^2+cd)^2 r_4} \right) \sin^2 \theta_4 \right]. \end{aligned} \quad (4.7)$$

The image system consists of:

- (i) three Stokeslets of strengths $-\alpha \frac{a}{d^3}$, $-\alpha \frac{b}{(c+d)^3}$, $\alpha \frac{abc^2}{(a^2+cd)^3}$ located at E_a, E_b, E_{ba} ;
- (ii) three Stokes-doublets of strengths $2\alpha \frac{a^3}{d^4}$, $2\alpha \frac{b^3}{(c+d)^4}$, $2\alpha \frac{a^3 b^3 c}{(a^2+cd)^3}$ located at E_a, E_b, E_{ba} ;
- (iii) three potential-doublets of strengths $-\alpha \frac{a^5}{d^5}$, $-\alpha \frac{b^5}{(c+d)^5}$, $\alpha \frac{a^5 b^5}{(a^2+cd)^5}$ located at E_a, E_b, E_{ba} respectively.

The drag in this case is

$$\begin{aligned} \mathbf{F} &= 8\pi\mu\alpha \left(\frac{a}{d^3} + \frac{b}{(c+d)^3} + \frac{abc^2}{(a^2+cd)^3} \right) \hat{\mathbf{k}} \\ &= 4\pi\mu \left([a\mathbf{q}_0]_O + [b\mathbf{q}_0]_{O'} - \left[\frac{ab}{c}\mathbf{q}_0\right]_D \right). \end{aligned} \quad (4.8)$$

In the examples considered, we find that the drag on the double-body is given by

$$\mathbf{F} = 4\pi\mu \left([a\mathbf{q}_0]_O + [b\mathbf{q}_0]_{O'} - \frac{ab}{c} [\mathbf{q}_0]_D \right). \quad (4.9)$$

where $[\mathbf{q}_0]_O$, $[\mathbf{q}_0]_{O'}$, $[\mathbf{q}_0]_D$ are the velocity of the undisturbed flow evaluated at O, O', D respectively. If we put $b = 0$ in (4.9), we get the drag formula for a single shear-free sphere of radius ' a '. This result is an analogue of Faxen's law [4] for a double-body.

5. APPLICATION TO RISING BUBBLES.

We consider two equal spherical bubbles intersecting orthogonally and rising steadily with a velocity U in a viscous fluid. The stream function for the motion of this double-body is obtained from (4.1) by taking $a = b$. This gives

$$\psi(r, \theta) - \frac{1}{2} U a \left[r \sin^2 \theta + r' \sin^2 \theta' - \frac{1}{\sqrt{2}} R \sin^2 \Theta \right] \quad (5.1)$$

The drag on the double-body is

$$\mathbf{F} = 5.172\pi\mu Ua \hat{\mathbf{k}} \quad (5.2)$$

The total drag for two equal bubbles touching each other and rising in a viscous fluid is given by, Harper (1983)

$$\mathbf{F} = 5.54\pi\mu Ua \hat{\mathbf{k}} \quad (5.3)$$

Hence, the drag on the double-body is less than that of the total drag on touching bubbles, when they are rising in a viscous fluid which is at rest, otherwise.

APPENDIX

As E (Fig. 1) moves from $z = -\infty$ to E' , the inverse point of E with respect to S_a , namely E_a moves from O to E' ; also the inverse point of E with respect to S_b , namely E_b moves from O' to F . Now the inverse point of E_b with respect to S_a , namely E_{ba} lies on the segment DF . Therefore, the singularities of the perturbation terms in (3.3) lie inside \mathcal{B} .

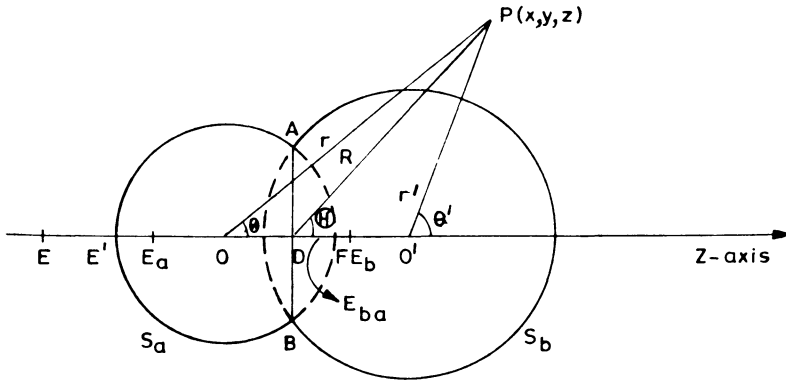


FIGURE 1. THE DOUBLE BODY \mathcal{B}

REFERENCES

1. AVUDAINAYAGAM, A. & JOTHIRAM, B., A circle theorem for plane Stokes flows, *QJMAM* **41**, pt. 3 (1988), 383-393.
2. COLLINS, W.D., A note on Stokes stream function for the slow steady motion of a viscous fluid before plane and spherical boundaries, *Mathematika* **1** (1954), 125-130.
3. COLLINS, W.D., Note on a sphere theorem for the axisymmetric Stokes flow of a viscous fluid, *Mathematika* **5** (1958), 118-121.
4. HAPPEL, J. & BRENNER, H., *Low Reynolds Number Hydrodynamics*, Prentice-Hall, Englewood Cliffs, 1965.
5. HARPER, J.F., Axisymmetric Stokes flow images in spherical free surfaces with applications to rising bubbles, *J. Aust. Math. Soc. Ser. B* **25** (1983), 217-231.
6. HASIMOTO, H., A sphere theorem on the Stokes equation for axisymmetric viscous flow, *J. Phys. Soc. Japan* **7** (1956), 793-797.
7. MARTINEK, J. & THIELMAN, H.P., Circle and sphere theorems for the biharmonic equation (interior and exterior problems), *ZAMP* **16** (1965), 494-501.
8. PALANIAPPAN, D.; NIGAM, S.D. & AMARANATH, T., A theorem for inviscid flow past two orthogonally intersecting unequal spheres, *J. Math. Phys. Sci.* **24**, no. 5 (1990), 289-295.
9. SEN, S.K., Circle theorems for steady Stokes flow, *ZAMP* **40** (1989), 139-145.

Special Issue on Space Dynamics

Call for Papers

Space dynamics is a very general title that can accommodate a long list of activities. This kind of research started with the study of the motion of the stars and the planets back to the origin of astronomy, and nowadays it has a large list of topics. It is possible to make a division in two main categories: astronomy and astrodynamics. By astronomy, we can relate topics that deal with the motion of the planets, natural satellites, comets, and so forth. Many important topics of research nowadays are related to those subjects. By astrodynamics, we mean topics related to spaceflight dynamics.

It means topics where a satellite, a rocket, or any kind of man-made object is travelling in space governed by the gravitational forces of celestial bodies and/or forces generated by propulsion systems that are available in those objects. Many topics are related to orbit determination, propagation, and orbital maneuvers related to those spacecrafts. Several other topics that are related to this subject are numerical methods, nonlinear dynamics, chaos, and control.

The main objective of this Special Issue is to publish topics that are under study in one of those lines. The idea is to get the most recent researches and published them in a very short time, so we can give a step in order to help scientists and engineers that work in this field to be aware of actual research. All the published papers have to be peer reviewed, but in a fast and accurate way so that the topics are not outdated by the large speed that the information flows nowadays.

Before submission authors should carefully read over the journal's Author Guidelines, which are located at <http://www.hindawi.com/journals/mpe/guidelines.html>. Prospective authors should submit an electronic copy of their complete manuscript through the journal Manuscript Tracking System at <http://mts.hindawi.com/> according to the following timetable:

Manuscript Due	July 1, 2009
First Round of Reviews	October 1, 2009
Publication Date	January 1, 2010

Lead Guest Editor

Antonio F. Bertachini A. Prado, Instituto Nacional de Pesquisas Espaciais (INPE), São José dos Campos, 12227-010 São Paulo, Brazil; prado@dem.inpe.br

Guest Editors

Maria Cecilia Zanardi, São Paulo State University (UNESP), Guaratinguetá, 12516-410 São Paulo, Brazil; cecilia@feg.unesp.br

Tadashi Yokoyama, Universidade Estadual Paulista (UNESP), Rio Claro, 13506-900 São Paulo, Brazil; tadashi@rc.unesp.br

Silvia Maria Giuliatti Winter, São Paulo State University (UNESP), Guaratinguetá, 12516-410 São Paulo, Brazil; silvia@feg.unesp.br