

# GENERALIZED QUASILINEARIZATION METHOD AND HIGHER ORDER OF CONVERGENCE FOR SECOND-ORDER BOUNDARY VALUE PROBLEMS

TANYA G. MELTON AND A. S. VATSALA

*Received 24 March 2005; Revised 13 September 2005; Accepted 19 September 2005*

The method of generalized quasilinearization for second-order boundary value problems has been extended when the forcing function is the sum of 2-hyperconvex and 2-hyperconcave functions. We develop two sequences under suitable conditions which converge to the unique solution of the boundary value problem. Furthermore, the convergence is of order 3. Finally, we provide numerical examples to show the application of the generalized quasilinearization method developed here for second-order boundary value problems.

Copyright © 2006 T. G. Melton and A. S. Vatsala. This is an open access article distributed under the Creative Commons Attribution License, which permits unrestricted use, distribution, and reproduction in any medium, provided the original work is properly cited.

## 1. Introduction

The method of quasilinearization [1, 2] combined with the technique of upper and lower solutions is an effective and fruitful technique for solving a wide variety of nonlinear problems. It has been referred to as a generalized quasilinearization method. See [9] for details. The method is extremely useful in scientific computations due to its accelerated rate of convergence as in [10, 11].

In [4, 13], the authors have obtained a higher order of convergence (an order more than 2) for initial value problems. They have considered situations when the forcing function is either hyperconvex or hyperconcave. In [12], we have obtained the results of higher order of convergence for first order initial value problems when the forcing function is the sum of hyperconvex and hyperconcave functions with natural and coupled lower and upper solutions. In this paper we extend the result to the second-order boundary value problems when the forcing function is a sum of 2-hyperconvex and 2-hyperconcave functions. We have proved the existence of the unique solution of the nonlinear problem using natural upper and lower solutions. We demonstrate the iterates converge cubically to the unique solution of the nonlinear problem. We merely state the result related to coupled

## 2 GQ method for second-order BV problem

lower and upper solutions without proof due to monotony. Finally, we present two numerical applications of our theoretical results developed in our main result. We note that the monotone iterates may not converge linearly or quadratically in general. See [4, 8] for examples. However in our result we have provided sufficient conditions for cubic convergence. For real world applications see [5].

For this purpose, consider the following second-order boundary value problem (BVP for short):

$$-u'' = f(t, u) + g(t, u), \quad Bu(\mu) = b_\mu, \quad \mu = 0, 1, \quad t \in J \equiv [0, 1], \quad (1.1)$$

where  $Bu(\mu) = \tau_\mu u(\mu) + (-1)^{\mu+1} \gamma_\mu u'(\mu) = b_\mu$ ,  $\tau_0, \tau_1 \geq 0$ ,  $\tau_0 + \tau_1 > 0$ ,  $\gamma_0, \gamma_1 > 0$ ,  $b_\mu \in R$  and  $f, g \in C[J \times R, R]$ .

Here we provide the definition of natural lower and upper solutions of (1.1). One can define coupled lower and upper solutions of the other types in the same manner. See for [14, 15] details.

*Definition 1.1.* The functions  $\alpha_0, \beta_0 \in C^2[J, R]$  are said to be natural lower and upper solutions if

$$\begin{aligned} -\alpha_0'' &\leq f(t, \alpha_0) + g(t, \alpha_0), & B\alpha_0(\mu) &\leq b_\mu \quad \text{on } J, \\ -\beta_0'' &\geq f(t, \beta_0) + g(t, \beta_0), & B\beta_0(\mu) &\geq b_\mu \quad \text{on } J. \end{aligned} \quad (1.2)$$

In order to facilitate later explanations, we will need the following definition.

*Definition 1.2.* A function  $h : A \rightarrow B$ ,  $A, B \subset R$  is called  $m$ -hyperconvex,  $m \geq 0$ , if  $h \in C^{m+1}[A, B]$  and  $d^{m+1}h/du^{m+1} \geq 0$  for  $u \in A$ ;  $h$  is called  $m$ -hyperconcave if the inequality is reversed.

In this paper, we use the maximum norm of  $u$  over  $J$ , that is,

$$\|u\| = \max_{t \in J} |u|. \quad (1.3)$$

Also throughout this paper we use the notation

$$\frac{\partial^k f(t, u)}{\partial u^k} = f^{(k)}(t, u) \quad (1.4)$$

for any function  $f(t, u)$  and for  $k = 0, 1, 2$ .

In view of natural upper and lower solutions of (1.1), we will develop results when  $f$  is 2-hyperconvex and  $g$  is 2-hyperconcave. Furthermore, we show that these iterates converge uniformly and monotonically to the unique solution of (1.1), and the convergence is of order 3.

## 2. Preliminaries

In this section, we recall some well known theorems and corollaries which we need in our main results relative to the BVP

$$-u'' = f(t, u, u'), \quad Bu(\mu) = b_\mu, \quad \mu = 0, 1, \quad t \in J \equiv [0, 1], \quad (2.1)$$

where  $Bu(\mu) = \tau_\mu u(\mu) + (-1)^{\mu+1} \nu_\mu u'(\mu) = b_\mu$ ,  $\tau_0, \tau_1 \geq 0$ ,  $\tau_0 + \tau_1 > 0$ ,  $\nu_0, \nu_1 > 0$ ,  $b_\mu \in R$  and  $f \in C[J \times R \times R, R]$ . For details see [3, 6, 7].

**THEOREM 2.1.** *Assume that*

- (i)  $\alpha_0, \beta_0 \in C^2[J, R]$  *are lower and upper solutions of (2.1).*
- (ii)  $f_u, f_{u'}$  *exist, continuous,  $f_u < 0$  and  $f_u \neq 0$  on  $\Omega = [(t, u, \bar{u}) : t \in [0, 1], \beta_0 \leq u \leq \alpha_0]$  and  $\bar{u} = \alpha'_0(t) = \beta'_0(t)$ .*

*Then we have  $\alpha_0(t) \leq \beta_0(t)$  on  $J$ .*

Next we present a special case of the above theorem which is known as the maximum principle, when  $u'$  term is missing.

**COROLLARY 2.2.** *Let  $q, r \in C[I, R]$  with  $r(t) \geq 0$  on  $J$ . Suppose further that  $p \in C^2[I, R]$  and*

$$-p'' \leq -rp, \quad Bp(\mu) \leq 0. \quad (2.2)$$

*Then  $p(t) \leq 0$  on  $J$ . If the inequalities are reversed, then  $p(t) \geq 0$  on  $J$ .*

The next corollary is a special case of [9, Theorem 3.1.3].

**COROLLARY 2.3.** *Assume that  $\alpha_0, \beta_0$  are lower and upper solutions of (1.1) respectively such that  $\alpha_0(t) \leq \beta_0(t)$  on  $J$ . Then there exists a solution  $u$  for the BVP (1.1) such that  $\alpha_0(t) \leq u(t) \leq \beta_0(t)$  on  $J$ .*

## 3. Main results

In this section, we consider the BVP

$$-u'' = f(t, u) + g(t, u), \quad Bu(\mu) = b_\mu, \quad \mu = 0, 1, \quad t \in J \equiv [0, 1], \quad (3.1)$$

where  $Bu(\mu) = \tau_\mu u(\mu) + (-1)^{\mu+1} \nu_\mu u'(\mu) = b_\mu$ ,  $\tau_0, \tau_1 \geq 0$ ,  $\tau_0 + \tau_1 > 0$ ,  $\nu_0, \nu_1 > 0$ ,  $b_\mu \in R$ ,  $f, g \in C[\Omega, R]$ ,  $\Omega = [(t, u) : \alpha_0(t) \leq u(t) \leq \beta_0(t), t \in J]$ , and  $\alpha_0, \beta_0 \in C^2[J, R]$  with  $\alpha_0(t) \leq \beta_0(t)$  on  $J$ .

Here, we state the inequalities satisfied by  $f(t, u)$  and  $g(t, u)$  when  $f(t, u)$  is 2-hyperconvex in  $u$  and  $g(t, u)$  is 2-hyperconcave in  $u$ . We need these inequalities for our first main result.

Suppose that  $f(t, u)$  is 2-hyperconvex in  $u$ , then we have the following inequalities,

$$f(t, \eta) \geq \sum_{i=0}^2 \frac{f^{(i)}(t, \xi)(\eta - \xi)^i}{i!}, \quad \eta \geq \xi, \quad (3.2)$$

$$f(t, \eta) \leq \sum_{i=0}^2 \frac{f^{(i)}(t, \xi)(\eta - \xi)^i}{i!}, \quad \eta \leq \xi. \quad (3.3)$$

#### 4 GQ method for second-order BV problem

Similarly, when  $g(t, u)$  is 2-hyperconcave in  $u$ , we have the following inequalities:

$$g(t, \eta) \geq \sum_{i=0}^1 \frac{g^{(i)}(t, \xi)(\eta - \xi)^i}{i!} + \frac{g^{(2)}(t, \eta)(\eta - \xi)^2}{(2)!}, \quad \eta \geq \xi, \quad (3.4)$$

$$g(t, \eta) \leq \sum_{i=0}^1 \frac{g^{(i)}(t, \xi)(\eta - \xi)^i}{i!} + \frac{g^{(2)}(t, \eta)(\eta - \xi)^2}{(2)!}, \quad \eta \leq \xi. \quad (3.5)$$

Based on these inequalities, relative to the natural upper and lower solutions, we develop two monotone sequences which converge uniformly and monotonically to the unique solution of (3.1) and the order of convergence is 3.

**THEOREM 3.1.** *Assume that*

- (i)  $\alpha_0, \beta_0 \in C^2[J, R]$  are lower and upper solutions with  $\alpha_0(t) \leq \beta_0(t)$  on  $J$ .
- (ii)  $f, g \in C^3[\Omega, R]$  such that  $f(t, u)$  is 2-hyperconvex in  $u$  on  $J$  [i.e.,  $f^{(3)}(t, u) \geq 0$  for  $(t, u) \in \Omega$ ],  $g(t, u)$  is 2-hyperconcave in  $u$  on  $J$  [i.e.,  $g^{(3)}(t, u) \leq 0$  for  $(t, u) \in \Omega$ ],  $f(t, u)$  is nondecreasing,  $g(t, u)$  is nonincreasing and  $f_u + g_u < 0$  on  $\Omega$ .

*Then there exist monotone sequences  $\{\alpha_n(t)\}$  and  $\{\beta_n(t)\}$ ,  $n \geq 0$  which converge uniformly and monotonically to the unique solution of (3.1) and the convergence is of order 3.*

*Proof.* The assumptions  $f^{(3)}(t, u) \geq 0$ ,  $g^{(3)}(t, u) \leq 0$  yield the inequalities (3.2), (3.3), (3.4), and (3.5) whenever  $\alpha_0 \leq \eta$ ,  $\xi \leq \beta_0$ . Let us first consider the following BVPs:

$$\begin{aligned} -w'' &= \tilde{F}(t, \alpha, \beta; w) \\ &= \sum_{i=0}^2 \frac{f^{(i)}(t, \alpha)(w - \alpha)^i}{i!} + \sum_{i=0}^1 \frac{g^{(i)}(t, \alpha)(w - \alpha)^i}{i!} + \frac{g^{(2)}(t, \beta)(w - \alpha)^2}{2!}, \\ Bw(\mu) &= b_\mu \quad \text{on } J; \end{aligned} \quad (3.6)$$

$$\begin{aligned} -v'' &= \tilde{G}(t, \alpha, \beta; v) \\ &= \sum_{i=0}^2 \frac{f^{(i)}(t, \beta)(v - \beta)^i}{i!} + \sum_{i=0}^1 \frac{g^{(i)}(t, \beta)(v - \beta)^i}{i!} + \frac{g^{(2)}(t, \alpha)(v - \beta)^2}{2!}, \\ Bv(\mu) &= b_\mu \quad \text{on } J. \end{aligned} \quad (3.7)$$

We develop the sequences  $\{\alpha_n(t)\}$  and  $\{\beta_n(t)\}$  using the above BVPs (3.6) and (3.7) respectively. Initially, we prove  $(\alpha_0, \beta_0)$  are lower and upper solutions of (3.6) and (3.7) respectively. To begin, we will consider natural lower and upper solutions of the equation (3.1):

$$\begin{aligned} -\alpha_0'' &\leq f(t, \alpha_0) + g(t, \alpha_0), & B\alpha_0(\mu) &\leq b_\mu, \\ -\beta_0'' &\geq f(t, \beta_0) + g(t, \beta_0), & B\beta_0(\mu) &\geq b_\mu, \end{aligned} \quad (3.8)$$

where  $\alpha_0(t) \leq \beta_0(t)$ . The inequalities (3.2) and (3.4), and (3.8) imply

$$\begin{aligned}
 -\alpha_0'' &\leq f(t, \alpha_0) + g(t, \alpha_0) \\
 &= \tilde{F}(t, \alpha_0, \beta_0; \alpha_0), \quad B\alpha_0(\mu) \leq b_\mu, \\
 -\beta_0'' &\geq f(t, \beta_0) + g(t, \beta_0) \\
 &\geq \sum_{i=0}^2 \frac{f^{(i)}(t, \alpha_0)(\beta_0 - \alpha_0)^i}{i!} + \sum_{i=0}^1 \frac{g^{(i)}(t, \alpha_0)(\beta_0 - \alpha_0)^i}{i!} + \frac{g^{(2)}(t, \beta_0)(\beta_0 - \alpha_0)^2}{2!} \\
 &= \tilde{F}(t, \alpha_0, \beta_0; \beta_0), \quad B\beta_0(\mu) \geq b_\mu.
 \end{aligned} \tag{3.9}$$

We can apply Corollary 2.3 together with (3.9) conclude that there exists a solution  $\alpha_1(t)$  of (3.6) with  $\alpha = \alpha_0$  and  $\beta = \beta_0$  such that  $\alpha_0 \leq \alpha_1 \leq \beta_0$  on  $J$ .

Using the inequalities (3.3), (3.5), and (3.8) on the same lines, we can get

$$-\beta_0'' \geq f(t, \beta_0) + g(t, \beta_0) = \tilde{G}(t, \alpha_0, \beta_0; \beta_0), \quad B\beta_0(\mu) \geq b_\mu, \tag{3.10}$$

$$\begin{aligned}
 -\alpha_0'' &\leq f(t, \alpha_0) + g(t, \alpha_0) \leq \sum_{i=0}^2 \frac{f^{(i)}(t, \beta_0)(\alpha_0 - \beta_0)^i}{i!} \\
 &\quad + \sum_{i=0}^1 \frac{g^{(i)}(t, \beta_0)(\alpha_0 - \beta_0)^i}{i!} + \frac{g^{(2)}(t, \alpha_0)(\alpha_0 - \beta_0)^2}{2!} \\
 &= \tilde{G}(t, \alpha_0, \beta_0; \alpha_0), \quad B\alpha_0(\mu) \leq b_\mu.
 \end{aligned} \tag{3.11}$$

Hence  $\alpha_0, \beta_0$  are lower and upper solutions of (3.7) with  $\alpha_0 \leq \beta_0$ . Applying Corollary 2.3, we obtain that there exists a solution  $\beta_1(t)$  of (3.7) with  $\alpha = \alpha_0$  and  $\beta = \beta_0$  such that  $\alpha_0 \leq \beta_1 \leq \beta_0$  on  $J$ .

Now we will prove that  $\alpha_1$  is a unique solution of (3.6). For this purpose we need to prove that  $\partial \tilde{F}(t, \alpha_0, \beta_0; \alpha_1) / \partial \alpha_1 < 0$ . Since  $f(t, u)$  is 2-hyperconvex in  $u$  and  $g(t, u)$  is 2-hyperconcave in  $u$  on  $J$  with  $f_u + g_u < 0$  on  $\Omega$ , we get

$$\begin{aligned}
 \frac{\partial \tilde{F}(t, \alpha_0, \beta_0; \alpha_1)}{\partial \alpha_1} &= f^{(1)}(t, \alpha_1) + g^{(1)}(t, \alpha_1) - \frac{f^{(3)}(t, \xi_1)(\alpha_1 - \alpha_0)^2}{(2)!} \\
 &\quad + g^{(3)}(t, \eta_1)(\alpha_1 - \alpha_0)(\beta_0 - \xi_2) \\
 &\leq f^{(1)}(t, \alpha_1) + g^{(1)}(t, \alpha_1) < 0,
 \end{aligned} \tag{3.12}$$

where  $\alpha_0 \leq \xi_1, \xi_2 \leq \alpha_1$  and  $\xi_2 \leq \eta_1 \leq \beta_0$ . Hence by the special case of Theorem 2.1 with  $u'$ -term missing, we can conclude that  $\alpha_1$  is the unique solution of (3.6). Similarly we can prove that  $\beta_1$  is the unique solution of (3.7).

## 6 GQ method for second-order BV problem

Using the nonincreasing property of  $g^{(2)}(t, u)$ , (3.2), (3.3), (3.4), (3.5) with  $\alpha_0 \leq \alpha_1 \leq \beta_0$ ,  $\alpha_0 \leq \beta_1 \leq \beta_0$  we have

$$\begin{aligned}
 -\alpha_1'' &= \tilde{F}(t, \alpha_0, \beta_0; \alpha_1) \\
 &= \sum_{i=0}^2 \frac{f^{(i)}(t, \alpha_0)(\alpha_1 - \alpha_0)^i}{i!} \\
 &\quad + \sum_{i=0}^1 \frac{g^{(i)}(t, \alpha_0)(\alpha_1 - \alpha_0)^i}{i!} + \frac{g^{(2)}(t, \beta_0)(\alpha_1 - \alpha_0)^2}{2!} \\
 &\leq f(t, \alpha_1) + g(t, \alpha_1), \quad B\alpha_1(\mu) \leq b_\mu;
 \end{aligned} \tag{3.13}$$

$$\begin{aligned}
 -\beta_1'' &= \tilde{G}(t, \alpha_0, \beta_0; \beta_1) \\
 &= \sum_{i=0}^2 \frac{f^{(i)}(t, \beta_0)(\beta_1 - \beta_0)^i}{i!} \\
 &\quad + \sum_{i=0}^1 \frac{g^{(i)}(t, \beta_0)(\beta_1 - \beta_0)^i}{i!} + \frac{g^{(2)}(t, \alpha_0)(\beta_1 - \beta_0)^2}{2!} \\
 &\geq f(t, \beta_1) + g(t, \beta_1), \quad B\beta_1(\mu) \geq b_\mu.
 \end{aligned} \tag{3.14}$$

Since  $\alpha_1, \beta_1$  are lower and upper solutions of (3.1), we can apply the special case of Theorem 2.1 to obtain  $\alpha_1 \leq \beta_1$  on  $J$ . Thus we have  $\alpha_0 \leq \alpha_1 \leq \beta_1 \leq \beta_0$  on  $J$ .

Assume now that  $\alpha_n$  and  $\beta_n$  are solutions of BVPs (3.6) and (3.7), respectively, with  $\alpha = \alpha_{n-1}$  and  $\beta = \beta_{n-1}$  such that  $\alpha_{n-1} \leq \alpha_n \leq \beta_n \leq \beta_{n-1}$  on  $J$  and

$$\begin{aligned}
 -\alpha_n'' &\leq f(t, \alpha_n) + g(t, \alpha_n), \quad B\alpha_n(\mu) \leq b_\mu, \\
 -\beta_n'' &\geq f(t, \beta_n) + g(t, \beta_n), \quad B\beta_n(\mu) \geq b_\mu,
 \end{aligned} \tag{3.15}$$

Certainly this is true for  $n = 1$ .

We need to show that  $\alpha_n \leq \alpha_{n+1} \leq \beta_{n+1} \leq \beta_n$  on  $J$ , where  $\alpha_{n+1}$  and  $\beta_{n+1}$  are solutions of BVPs (3.6) and (3.7), respectively, with  $\alpha = \alpha_n$  and  $\beta = \beta_n$ .

The inequalities (3.2) and (3.4), and (3.15) imply

$$\begin{aligned}
 -\alpha_n'' &\leq f(t, \alpha_n) + g(t, \alpha_n) \\
 &= \tilde{F}(t, \alpha_n, \beta_n; \alpha_n), \quad B\alpha_n(\mu) \leq b_\mu, \\
 -\beta_n'' &\geq f(t, \beta_n) + g(t, \beta_n) \\
 &\geq \sum_{i=0}^2 \frac{f^{(i)}(t, \alpha_n)(\beta_n - \alpha_n)^i}{i!} \\
 &\quad + \sum_{i=0}^1 \frac{g^{(i)}(t, \alpha_n)(\beta_n - \alpha_n)^i}{i!} + \frac{g^{(2)}(t, \beta_n)(\beta_n - \alpha_n)^2}{2!} \\
 &= \tilde{F}(t, \alpha_n, \beta_n; \beta_n), \quad B\beta_n(\mu) \geq b_\mu.
 \end{aligned} \tag{3.16}$$

This proves that  $\alpha_n, \beta_n$  are lower and upper solutions of (3.6) with  $\alpha = \alpha_n$  and  $\beta = \beta_n$ . Hence using (3.16) and Corollary 2.3 we can conclude that there exists a solution  $\alpha_{n+1}(t)$  of (3.6) with  $\alpha = \alpha_n$  and  $\beta = \beta_n$  such that  $\alpha_n \leq \alpha_{n+1} \leq \beta_n$  on  $J$ .

The inequalities (3.3) and (3.5), and (3.15) imply

$$-\beta_n'' \geq f(t, \beta_n) + g(t, \beta_n) = \tilde{G}(t, \alpha_n, \beta_n; \beta_n), \quad B\beta_n(\mu) \geq b_\mu, \quad (3.17)$$

$$\begin{aligned} -\alpha_n'' &\leq f(t, \alpha_n) + g(t, \alpha_n) \\ &\leq \sum_{i=0}^2 \frac{f^{(i)}(t, \beta_n)(\alpha_n - \beta_n)^i}{i!} \\ &\quad + \sum_{i=0}^1 \frac{g^{(i)}(t, \beta_n)(\alpha_n - \beta_n)^i}{i!} + \frac{g^{(2)}(t, \alpha_n)(\alpha_n - \beta_n)^2}{2!} \\ &= \tilde{G}(t, \alpha_n, \beta_n; \alpha_n), \quad B\alpha_n(\mu) \leq b_\mu. \end{aligned} \quad (3.18)$$

Hence  $\alpha_n, \beta_n$  are lower and upper solutions of (3.7) with  $\alpha = \alpha_n$  and  $\beta = \beta_n$ . Applying Corollary 2.3 we can show that there exists a solution  $\beta_{n+1}(t)$  of (3.7) with  $\alpha = \alpha_n$  and  $\beta = \beta_n$  such that  $\alpha_n \leq \beta_{n+1} \leq \beta_n$  on  $J$ . In view of assumptions on  $f$  and  $g$ ,  $\alpha_{n+1}, \beta_{n+1}$  are unique by the special case of Theorem 2.1.

Furthermore, by (3.2), (3.3), (3.4), (3.5) with  $\alpha_n \leq \alpha_{n+1} \leq \beta_n$ ,  $\alpha_n \leq \beta_{n+1} \leq \beta_n$ , and  $g^{(2)}(t, u)$  nonincreasing  $u$ , we get

$$\begin{aligned} -\alpha_{n+1}'' &= \tilde{F}(t, \alpha_n, \beta_n; \alpha_{n+1}) \\ &= \sum_{i=0}^2 \frac{f^{(i)}(t, \alpha_n)(\alpha_{n+1} - \alpha_n)^i}{i!} \\ &\quad + \sum_{i=0}^1 \frac{g^{(i)}(t, \alpha_n)(\alpha_{n+1} - \alpha_n)^i}{i!} + \frac{g^{(2)}(t, \beta_n)(\alpha_{n+1} - \alpha_n)^2}{2!} \\ &\leq f(t, \alpha_{n+1}) + g(t, \alpha_{n+1}), \quad B\alpha_{n+1}(\mu) \leq b_\mu; \\ -\beta_{n+1}'' &= \tilde{G}(t, \alpha_n, \beta_n; \beta_{n+1}) \\ &= \sum_{i=0}^2 \frac{f^{(i)}(t, \beta_n)(\beta_{n+1} - \beta_n)^i}{i!} \\ &\quad + \sum_{i=0}^1 \frac{g^{(i)}(t, \beta_n)(\beta_{n+1} - \beta_n)^i}{i!} + \frac{g^{(2)}(t, \alpha_n)(\beta_{n+1} - \beta_n)^2}{2!} \\ &\geq f(t, \beta_{n+1}) + g(t, \beta_{n+1}), \quad B\beta_{n+1}(\mu) \geq b_\mu. \end{aligned} \quad (3.19)$$

Since  $\alpha_{n+1}, \beta_{n+1}$  are lower and upper solutions of (3.1) we can apply the special case of Theorem 2.1 and get  $\alpha_{n+1} \leq \beta_{n+1}$  on  $J$ . This proves  $\alpha_n \leq \alpha_{n+1} \leq \beta_{n+1} \leq \beta_n$  on  $J$ . Hence by induction, we have

$$\alpha_0 \leq \alpha_1 \leq \cdots \leq \alpha_n \leq \beta_n \leq \cdots \leq \beta_1 \leq \beta_0. \quad (3.20)$$

## 8 GQ method for second-order BV problem

By the fact that  $\alpha_n, \beta_n$  are lower and upper solutions of (3.1) with  $\alpha_n \leq \beta_n$  and Corollary 2.3 we can conclude that there exists a solution  $u(t)$  of (3.1) such that  $\alpha_n \leq u \leq \beta_n$  on  $J$ . From this we can obtain that

$$\alpha_0 \leq \alpha_1 \leq \cdots \leq \alpha_n \leq u \leq \beta_n \leq \cdots \leq \beta_1 \leq \beta_0. \quad (3.21)$$

Using Green's function, we can write  $\alpha_n(t)$  and  $\beta_n(t)$  as follows:

$$\begin{aligned} \alpha_n(t) &= \int_0^1 K(t,s) \tilde{F}(s, \alpha_{n-1}(s), \beta_{n-1}(s); \alpha_n(s)) ds, \\ \beta_n(t) &= \int_0^1 K(t,s) \tilde{G}(s, \alpha_{n-1}(s), \beta_{n-1}(s); \beta_n(s)) ds. \end{aligned} \quad (3.22)$$

Here  $K(t,s)$  is the Green's function given by

$$K(t,s) = \begin{cases} \frac{1}{c} x(s)y(t), & 0 \leq s \leq t \leq 1, \\ \frac{1}{c} x(t)y(s), & 0 \leq t \leq s \leq 1, \end{cases} \quad (3.23)$$

where  $x(t) = (\tau_0/\nu_0)t + 1$ ,  $y(t) = (\tau_1/\nu_1)(1-t) + 1$  are two linearly independent solutions of  $-u'' = 0$  and  $c = x(t)y'(t) - x'(t)y(t)$ . We can prove that the sequences  $\{\alpha_n(t)\}$  and  $\{\beta_n(t)\}$  are equicontinuous and uniformly bounded. Now applying Ascoli-Arzelà's theorem, we can show that there exist subsequences  $\{\alpha_{n,j}(t)\}$ ,  $\{\beta_{n,j}(t)\}$  such that  $\alpha_{n,j}(t) \rightarrow \rho(t)$  and  $\beta_{n,j}(t) \rightarrow r(t)$  with  $\rho(t) \leq u \leq r(t)$  on  $J$ . Since the sequences  $\{\alpha_n(t)\}$ ,  $\{\beta_n(t)\}$  are monotone, we have  $\alpha_n(t) \rightarrow \rho(t)$  and  $\beta_n(t) \rightarrow r(t)$ . Taking the limit as  $n \rightarrow \infty$ , we get

$$\lim_{n \rightarrow \infty} \alpha_n(t) = \rho(t) \leq u \leq r(t) = \lim_{n \rightarrow \infty} \beta_n(t). \quad (3.24)$$

Next we show that  $\rho(t) \geq r(t)$ . From BVPs (3.6) and (3.7) we get

$$\begin{aligned} -\rho''(t) &= f(t, \rho) + g(t, \rho), & B\rho(\mu) &= b(\mu), \\ -r''(t) &= f(t, r) + g(t, r), & Br(\mu) &= b(\mu). \end{aligned} \quad (3.25)$$

Set  $p(t) = r - \rho$  and note that  $Bp(\mu) = 0$ . We have

$$\begin{aligned} -p'' &= -r''(t) - (-\rho''(t)) = f(t, r) + g(t, r) - f(t, \rho) - g(t, \rho) \\ &= f_u(t, \xi)(r - \rho) + g_u(t, \eta)(r - \rho) = (f_u(t, \xi) + g_u(t, \eta))p, \end{aligned} \quad (3.26)$$

where  $\xi, \eta$  are between  $\rho$  and  $r$ . This implies that  $-p'' \leq -kp$ , where  $f_u + g_u \leq -k < 0$ . Now applying Corollary 2.2 we get  $p \leq 0$  or  $r(t) \leq \rho(t)$  on  $J$ . This proves  $r(t) = \rho(t) = u(t)$ . Hence  $\{\alpha_n(t)\}$  and  $\{\beta_n(t)\}$  converge uniformly and monotonically to the unique solution of (3.1).



Let us consider the order of convergence of  $\{\alpha_n(t)\}$  and  $\{\beta_n(t)\}$  to the unique solution  $u(t)$  of (3.1). To do this, set

$$\begin{aligned} p_n(t) &= u(t) - \alpha_n(t) \geq 0, \\ q_n(t) &= \beta_n(t) - u(t) \geq 0, \end{aligned} \quad (3.27)$$

for  $t \in J$  with  $Bp_n(\mu) = Bq_n(\mu) = 0$ .

Therefore we can write

$$p_{n+1} = \int_0^1 K(t, s) [f(s, u) + g(s, u) - \tilde{F}(s, \alpha_n, \beta_n; \alpha_{n+1})] ds, \quad (3.28)$$

where  $K(t, s)$  is the Green's function given by (3.23).

Now using the Taylor series expansion with Lagrange remainder, and the mean value theorem together with (ii) of the hypothesis, we obtain

$$\begin{aligned} 0 &\leq p_{n+1} \\ &= \int_0^1 K(t, s) \left\{ f(s, u) + g(s, u) \right. \\ &\quad - \left[ \sum_{i=0}^2 \frac{f^{(i)}(s, \alpha_n) (\alpha_{n+1} - \alpha_n)^i}{i!} \right. \\ &\quad \left. \left. + \sum_{i=0}^1 \frac{g^{(i)}(s, \alpha_n) (\alpha_{n+1} - \alpha_n)^i}{i!} + \frac{g^{(2)}(s, \beta_n) (\alpha_{n+1} - \alpha_n)^2}{2!} \right] \right\} ds \\ &= \int_0^1 K(t, s) \left\{ f(s, u) + g(s, u) \right. \\ &\quad - \left[ f(s, \alpha_{n+1}) - \frac{f^{(3)}(s, \xi_1) (\alpha_{n+1} - \alpha_n)^3}{(3)!} + g(s, \alpha_{n+1}) \right. \\ &\quad \left. \left. - \frac{g^{(2)}(s, \xi_2) (\alpha_{n+1} - \alpha_n)^2}{2!} + \frac{g^{(2)}(s, \beta_n) (\alpha_{n+1} - \alpha_n)^2}{2!} \right] \right\} ds \\ &\leq \int_0^1 K(t, s) \left[ f_u(s, \eta_1) (u - \alpha_{n+1}) + g_u(s, \eta_2) (u - \alpha_{n+1}) \right. \\ &\quad \left. + \frac{f^{(3)}(s, \xi_1) (u - \alpha_n)^3}{(3)!} - \frac{g^{(3)}(s, \eta_3) (\beta_n - \xi_2) (u - \alpha_n)^2}{2} \right] ds \\ &= \int_0^1 K(t, s) \left\{ [f_u(s, \eta_1) + g_u(s, \eta_2)] p_{n+1} \right. \\ &\quad \left. + \frac{f^{(3)}(s, \xi_1) p_n^3}{(3)!} - \frac{g^{(3)}(s, \eta_2) p_n^2 (q_n + p_n)}{2} \right\} ds, \end{aligned} \quad (3.29)$$

## 10 GQ method for second-order BV problem

where  $\alpha_n \leq \xi_1$ ,  $\xi_2 \leq \alpha_{n+1} \leq \eta_1$ ,  $\eta_2 \leq u$ , and  $\xi_2 \leq \eta_3 \leq \beta_n$ . Let  $|K(t,s)| \leq A_1$ ,  $|f_u(t,u) + g_u(t,v)| \leq A_2$ ,  $|f^{(3)}(t,u)/3!| \leq A_3$ , and  $|g^{(3)}(t,u)/2| \leq A_4$ . Then we have

$$\|p_{n+1}\| \leq k_1 \|p_n\|^3 + k_2 \|p_n\|^2 (\|q_n\| + \|p_n\|), \quad (3.30)$$

where  $k_1 = A_1 A_3 / (1 - A_1 A_2)$  and  $k_2 = A_1 A_4 / (1 - A_1 A_2)$ .

Similarly, we can write

$$q_{n+1} = \int_0^1 K(t,s) [\tilde{G}(s, \alpha_n, \beta_n; \beta_{n+1}) - f(s, u) - g(s, u)] ds, \quad (3.31)$$

where  $K(t,s)$  is the Green's function given by (3.23).

Using the Taylor series expansion with Lagrange remainder, and the mean value theorem together with (ii), we can show

$$\|q_{n+1}\| \leq k_1 \|q_n\|^3 + k_2 \|q_n\|^2 (\|q_n\| + \|p_n\|), \quad (3.32)$$

where  $k_1 = A_1 A_3 / (1 - A_1 A_2)$  and  $k_2 = A_1 A_4 / (1 - A_1 A_2)$ .

Hence combining (3.30) and (3.32) we obtain

$$\begin{aligned} & \max_{t \in J} |u(t) - \alpha_{n+1}(t)| + \max_{t \in J} |\beta_{n+1}(t) - u(t)| \\ & \leq C \left[ \max_{t \in J} |u(t) - \alpha_n(t)| + \max_{t \in J} |\beta_n(t) - u(t)| \right]^3, \end{aligned} \quad (3.33)$$

where  $C$  is an appropriate positive constant.

This completes the proof.  $\square$

We note that the unique solution we have obtained is the unique solution of (3.1) in the sector determined by the lower and upper solutions.

Next we merely state a result without proof using coupled lower and upper solutions of (3.1). However, in order to show the existence of the unique solution of the iterates, we use the existence result [7, Theorem 2.4.1]. for systems and a special case of the comparison theorem of [7].

**THEOREM 3.2.** *Assume that*

- (i)  $\alpha_0, \beta_0 \in C^2[J, R]$  are coupled lower and upper solutions of (3.1) with  $\alpha_0(t) \leq \beta_0(t)$  on  $J$  such that

$$\begin{aligned} -\alpha_0'' &\leq f(t, \beta_0) + g(t, \alpha_0), & B\alpha_0(\mu) &\leq b_\mu & \text{on } J, \\ -\beta_0'' &\geq f(t, \alpha_0) + g(t, \beta_0), & B\beta_0(\mu) &\geq b_\mu & \text{on } J; \end{aligned} \quad (3.34)$$

- (ii)  $f, g \in C^3[\Omega, R]$  such that  $f(t, u)$  is 2-hyperconvex in  $u$  on  $J$  [i.e.,  $f^{(3)}(t, u) \geq 0$  for  $(t, u) \in \Omega$ ],  $g(t, u)$  is 2-hyperconcave in  $u$  on  $J$  [i.e.,  $g^{(3)}(t, u) \leq 0$  for  $(t, u) \in \Omega$ ],  $f(t, u), g(t, u)$  are nonincreasing with  $f_u - g_u > 0$  and

$$f_u(t, u) \leq -\max_{\Omega} [f^{(3)}(t, u)] (\beta_0 - \alpha_0)^2 \leq 0 \quad \text{on } \Omega. \quad (3.35)$$

Then there exist monotone sequences  $\{\alpha_n(t)\}$  and  $\{\beta_n(t)\}$ ,  $n \geq 0$  such that

$$\begin{aligned} -\alpha_n'' &= \sum_{i=0}^1 \frac{f^{(i)}(t, \beta_{n-1}) (\beta_n - \beta_{n-1})^i}{i!} + \frac{f^{(2)}(t, \alpha_{n-1}) (\beta_n - \beta_{n-1})^2}{(2)!} \\ &\quad + \sum_{i=0}^1 \frac{g^{(i)}(t, \alpha_{n-1}) (\alpha_n - \alpha_{n-1})^i}{i!} + \frac{g^{(2)}(t, \beta_{n-1}) (\alpha_n - \alpha_{n-1})^2}{(2)!}, \\ B\alpha_n(\mu) &= b_\mu \quad \text{on } J; \\ -\beta_n'' &= \sum_{i=0}^1 \frac{f^{(i)}(t, \alpha_{n-1}) (\alpha_n - \alpha_{n-1})^i}{i!} + \frac{f^{(2)}(t, \beta_{n-1}) (\alpha_n - \alpha_{n-1})^2}{(2)!} \\ &\quad + \sum_{i=0}^1 \frac{g^{(i)}(t, \beta_{n-1}) (\beta_n - \beta_{n-1})^i}{i!} + \frac{g^{(2)}(t, \alpha_{n-1}) (\beta_n - \beta_{n-1})^2}{(2)!}, \\ B\beta_n(\mu) &= b_\mu \quad \text{on } J, \end{aligned} \quad (3.36)$$

which converge uniformly and monotonically to the unique solution of (3.1) and the convergence is of order 3.

*Remark 3.3.* Similar results can be obtained for the other two coupled upper and lower solutions of (3.1) and the numerical applications of these results can be demonstrated.

#### 4. Numerical results

Next we will provide an example which satisfies all the hypotheses of Theorem 3.1 which demonstrates the application of Theorem 3.1.

*Example 4.1.* Let us consider the following BVP:

$$\begin{aligned} -u'' &= u^3 - 2u^4 - 0.1u + 0.4, \\ u(0) &= 0, \quad u(1) = 1. \end{aligned} \quad (4.1)$$

It is easy to check that  $\alpha_0(t) \equiv 0$  and  $\beta_0(t) \equiv 1$  are natural lower and upper solutions for (4.1), respectively. Let  $H(t, u)$  denote the right-hand side of (4.1) and split it into nonincreasing and nondecreasing functions as  $H(t, u) = f(t, u) + g(t, u)$  where

$$\begin{aligned} f(t, u) &= u^3, \\ g(t, u) &= -2u^4 - 0.1u + 0.4. \end{aligned} \quad (4.2)$$

Table 4.1. Table of three  $\alpha, \beta$ -iterates of (4.1).

$t$	$\alpha_1(t)$	$\alpha_2(t)$	$\alpha_3(t)$	$\beta_3(t)$	$\beta_2(t)$	$\beta_1(t)$
0.1	0.071613	0.105795	0.114155	0.115155	0.121882	0.211998
0.2	0.139816	0.207722	0.224408	0.226396	0.239650	0.372556
0.3	0.206071	0.305997	0.330820	0.333780	0.352693	0.497196
0.4	0.272568	0.401158	0.433435	0.437334	0.460118	0.596776
0.5	0.342305	0.494293	0.532364	0.537104	0.561279	0.679076
0.6	0.419460	0.587139	0.627930	0.633249	0.656144	0.749881
0.7	0.510237	0.681965	0.720845	0.726212	0.745445	0.813727
0.8	0.624444	0.781200	0.812382	0.816952	0.830723	0.874419
0.9	0.778369	0.886852	0.904514	0.907236	0.914404	0.935401

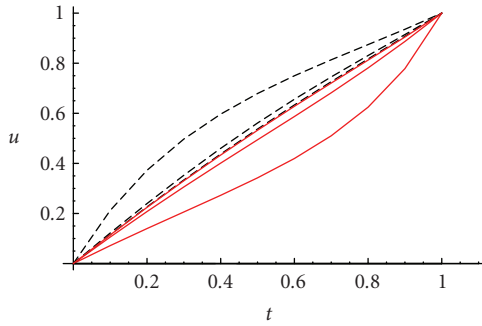


Figure 4.1

It is easy to show that

$$\begin{aligned} f_{uuu} &= 6 > 0, \\ g_{uuu} &= -48u \leq 0 \end{aligned} \quad (4.3)$$

for  $0 \leq u \leq 1$ . Hence  $f$  is a 2-hyperconvex function and  $g$  is a 2-hyperconcave function. Now we need to check the following conditions in order to use Theorem 3.1:

$$\begin{aligned} f_u(t, u) &= 3u^2 \geq 0, \\ g_u(t, u) &= -8u^3 - 0.1 \leq 0, \\ f_u(t, u) + g_u(t, u) &= 3u^2 - 8u^3 - 0.1 < 0, \end{aligned} \quad (4.4)$$

whenever  $0 \leq u \leq 1$ . Hence we can apply the iterates of Theorem 3.1. Using the nonlinear finite-difference methods for BVPs and Mathematica we can find the  $\alpha, \beta$ -iterates as given in Table 4.1.

The  $\alpha$ -iterates (with broken line) and the  $\beta$ -iterates (with unbroken line) can be seen on Figure 4.1.

Given the specific finite difference scheme, we can apply it to obtain lower and upper solutions. Then, we can make the difference between upper and lower solutions arbitrarily small. The obtained numerical solution however, will be close to the actual solution of the nonlinear problem (4.1) only within the truncation error of the finite difference scheme chosen.

Now we will provide a numerical example to show the usefulness of Theorem 3.2.

*Example 4.2.* Let us discuss the following second-order BVP:

$$-u'' = 3 \cos u - 27e^{u/3} + 25.5, \quad u(0.1) = 0.1, \quad u(0.5) = 0.5. \quad (4.5)$$

Denote the right-hand side of (4.5) by  $H(t, u)$ . We can split the forcing function into two functions as  $H(t, u) = f(t, u) + g(t, u)$  where

$$\begin{aligned} f(t, u) &= 3 \cos u, \\ g(t, u) &= -27e^{u/3} + 25.5. \end{aligned} \quad (4.6)$$

If we choose  $\alpha_0(t) \equiv 0.1$ ,  $\beta_0(t) \equiv 0.5$ , and  $0.1 \leq t \leq 0.5$  we get

$$\begin{aligned} 0 &\leq 3 \cos 0.5 - 27e^{0.1/3} + 25.5 = 0.21758, \\ 0 &\geq 3 \cos 0.1 - 27e^{0.5/3} + 25.5 = -3.41172, \\ 0.1 &\leq 0.1, \quad 0.5 \geq 0.5. \end{aligned} \quad (4.7)$$

Thus  $\alpha_0(t) \equiv 0.1$  and  $\beta_0(t) \equiv 0.5$  are coupled lower and upper solutions for (4.5) of the type defined in Theorem 3.2.

Next we can show that

$$\begin{aligned} f_{uuu} &= 3 \sin u > 0, \\ g_{uuu} &= -e^{u/3} < 0 \end{aligned} \quad (4.8)$$

for  $0.1 \leq u \leq 0.5$ . Hence  $f$  is 2-hyperconvex function and  $g$  is 2-hyperconcave function. Now we need to check the following conditions in order to apply Theorem 3.2:

$$\begin{aligned} f_u(t, u) &= -3 \sin u < 0, \\ g_u(t, u) &= -9e^{u/3} < 0, \\ f_u(t, u) - g_u(t, u) &= e^u + u^2 > 0, \\ -3 \sin 0.1 &\leq -3 \sin 0.5(0.5 - 0.1)^2 \leq 0, \end{aligned} \quad (4.9)$$

whenever  $0.1 \leq u \leq 0.5$ . Hence all the hypotheses of Theorem 3.2 are satisfied and we can apply the given iterates. Now using the nonlinear finite-difference methods for BVPs and Mathematica we can derive the  $\alpha, \beta$ -iterates in Table 4.2.

The graph on Figure 4.2 shows  $\alpha$ -iterates (with broken line) and the  $\beta$ -iterates (with unbroken line).

Table 4.2. Table of three  $\alpha, \beta$ -iterates of (4.5).

$t$	$\alpha_1(t)$	$\alpha_2(t)$	$\alpha_3(t)$	$\beta_3(t)$	$\beta_2(t)$	$\beta_1(t)$
0.10	0.100000	0.100000	0.100000	0.100000	0.100000	0.100000
0.15	0.141017	0.141551	0.141573	0.141646	0.142080	0.145352
0.20	0.182354	0.182909	0.182942	0.183077	0.183878	0.189605
0.25	0.225015	0.225334	0.225365	0.225541	0.226590	0.233909
0.30	0.270074	0.270116	0.270138	0.270329	0.271473	0.279436
0.35	0.318505	0.318582	0.318595	0.318773	0.319842	0.327418
0.40	0.372012	0.372103	0.372110	0.372247	0.373077	0.379177
0.45	0.432077	0.432091	0.432095	0.432169	0.432624	0.436164
0.50	0.500000	0.500000	0.500000	0.500000	0.500000	0.500000

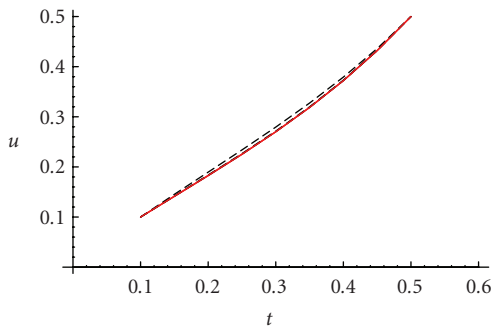


Figure 4.2

*Remark 4.3.* Note that the interval in the above example is due to the fact that  $f$  and  $g$  satisfies the hypothesis of Theorem 3.2 on the specific interval chosen.

## 5. Conclusion

We have used iterates of nonlinearity of order 2 when the forcing function is the sum of 2-hyperconvex and 2-hyperconcave. We develop two sequences depending on the type of the lower and upper solutions, which converge rapidly (order 3) to the unique solution of (3.1). We demonstrate the application of the results with numerical applications.

## References

- [1] R. E. Bellman, *Methods of Nonlinear Analysis. Vol. 1*, Mathematics in Science and Engineering, vol. 61-I, Academic Press, New York, 1970.
- [2] R. E. Bellman and R. E. Kalaba, *Quasilinearization and Nonlinear Boundary-Value Problems*, Modern Analytic and Computational Methods in Science and Mathematics, vol. 3, American Elsevier, New York, 1965.
- [3] S. R. Bernfeld and V. Lakshmikantham, *An Introduction to Nonlinear Boundary Value Problems*, Mathematics in Science and Engineering, vol. 109, Academic Press, New York, 1974.

- [4] A. Cabada and J. J. Nieto, *Rapid convergence of the iterative technique for first order initial value problems*, Applied Mathematics and Computation **87** (1997), no. 2-3, 217–226.
- [5] ———, *Quasilinearization and rate of convergence for higher-order nonlinear periodic boundary-value problems*, Journal of Optimization Theory and Applications **108** (2001), no. 1, 97–107.
- [6] S. Heikkilä and V. Lakshmikantham, *Monotone Iterative Techniques for Discontinuous Nonlinear Differential Equations*, Monographs and Textbooks in Pure and Applied Mathematics, vol. 181, Marcel Dekker, New York, 1994.
- [7] G. S. Ladde, V. Lakshmikantham, and A. S. Vatsala, *Monotone Iterative Techniques for Nonlinear Differential Equations*, Monographs, Advanced Texts and Surveys in Pure and Applied Mathematics, vol. 27, Pitman, Massachusetts, 1985.
- [8] V. Lakshmikantham and J. J. Nieto, *Generalized quasilinearization iterative method for initial value problems*, Nonlinear Studies **2** (1995), 1–9.
- [9] V. Lakshmikantham and A. S. Vatsala, *Generalized Quasilinearization for Nonlinear Problems*, Mathematics and Its Applications, vol. 440, Kluwer Academic, Dordrecht, 1998.
- [10] V. B. Mandelzweig, *Quasilinearization method and its verification on exactly solvable models in quantum mechanics*, Journal of Mathematical Physics **40** (1999), no. 12, 6266–6291.
- [11] V. B. Mandelzweig and F. Tabakin, *Quasilinearization approach to nonlinear problems in physics with application to nonlinear ODEs*, Computer Physics Communications **141** (2001), no. 2, 268–281.
- [12] T. Melton and A. S. Vatsala, *Generalized quasilinearization and higher order of convergence for first order initial value problems*, to appear in Dynamic Systems & Applications.
- [13] R. N. Mohapatra, K. Vajravelu, and Y. Yin, *Extension of the method of quasilinearization and rapid convergence*, Journal of Optimization Theory and Applications **96** (1998), no. 3, 667–682.
- [14] M. Sokol and A. S. Vatsala, *A unified exhaustive study of monotone iterative method for initial value problems*, Nonlinear Studies **8** (2001), no. 4, 429–438.
- [15] I. H. West and A. S. Vatsala, *Generalized monotone iterative method for initial value problems*, Applied Mathematics Letters **17** (2004), no. 11, 1231–1237.

Tanya G. Melton: Department of Mathematics, University of Louisiana at Lafayette, Lafayette,  
LA 70504-1010, USA

*E-mail address:* tmelton@lsua.edu

A. S. Vatsala: Department of Mathematics, University of Louisiana at Lafayette, Lafayette,  
LA 70504-1010, USA

*E-mail address:* vatsala@louisiana.edu

## Special Issue on Modeling Experimental Nonlinear Dynamics and Chaotic Scenarios

### Call for Papers

Thinking about nonlinearity in engineering areas, up to the 70s, was focused on intentionally built nonlinear parts in order to improve the operational characteristics of a device or system. Keying, saturation, hysteretic phenomena, and dead zones were added to existing devices increasing their behavior diversity and precision. In this context, an intrinsic nonlinearity was treated just as a linear approximation, around equilibrium points.

Inspired on the rediscovering of the richness of nonlinear and chaotic phenomena, engineers started using analytical tools from “Qualitative Theory of Differential Equations,” allowing more precise analysis and synthesis, in order to produce new vital products and services. Bifurcation theory, dynamical systems and chaos started to be part of the mandatory set of tools for design engineers.

This proposed special edition of the *Mathematical Problems in Engineering* aims to provide a picture of the importance of the bifurcation theory, relating it with nonlinear and chaotic dynamics for natural and engineered systems. Ideas of how this dynamics can be captured through precisely tailored real and numerical experiments and understanding by the combination of specific tools that associate dynamical system theory and geometric tools in a very clever, sophisticated, and at the same time simple and unique analytical environment are the subject of this issue, allowing new methods to design high-precision devices and equipment.

Authors should follow the Mathematical Problems in Engineering manuscript format described at <http://www.hindawi.com/journals/mpe/>. Prospective authors should submit an electronic copy of their complete manuscript through the journal Manuscript Tracking System at <http://mts.hindawi.com/> according to the following timetable:

Manuscript Due	December 1, 2008
First Round of Reviews	March 1, 2009
Publication Date	June 1, 2009

### Guest Editors

**José Roberto Castilho Piqueira**, Telecommunication and Control Engineering Department, Polytechnic School, The University of São Paulo, 05508-970 São Paulo, Brazil; [piqueira@lac.usp.br](mailto:piqueira@lac.usp.br)

**Elbert E. Neher Macau**, Laboratório Associado de Matemática Aplicada e Computação (LAC), Instituto Nacional de Pesquisas Espaciais (INPE), São José dos Campos, 12227-010 São Paulo, Brazil ; [elbert@lac.inpe.br](mailto:elbert@lac.inpe.br)

**Celso Grebogi**, Center for Applied Dynamics Research, King's College, University of Aberdeen, Aberdeen AB24 3UE, UK; [grebogi@abdn.ac.uk](mailto:grebogi@abdn.ac.uk)