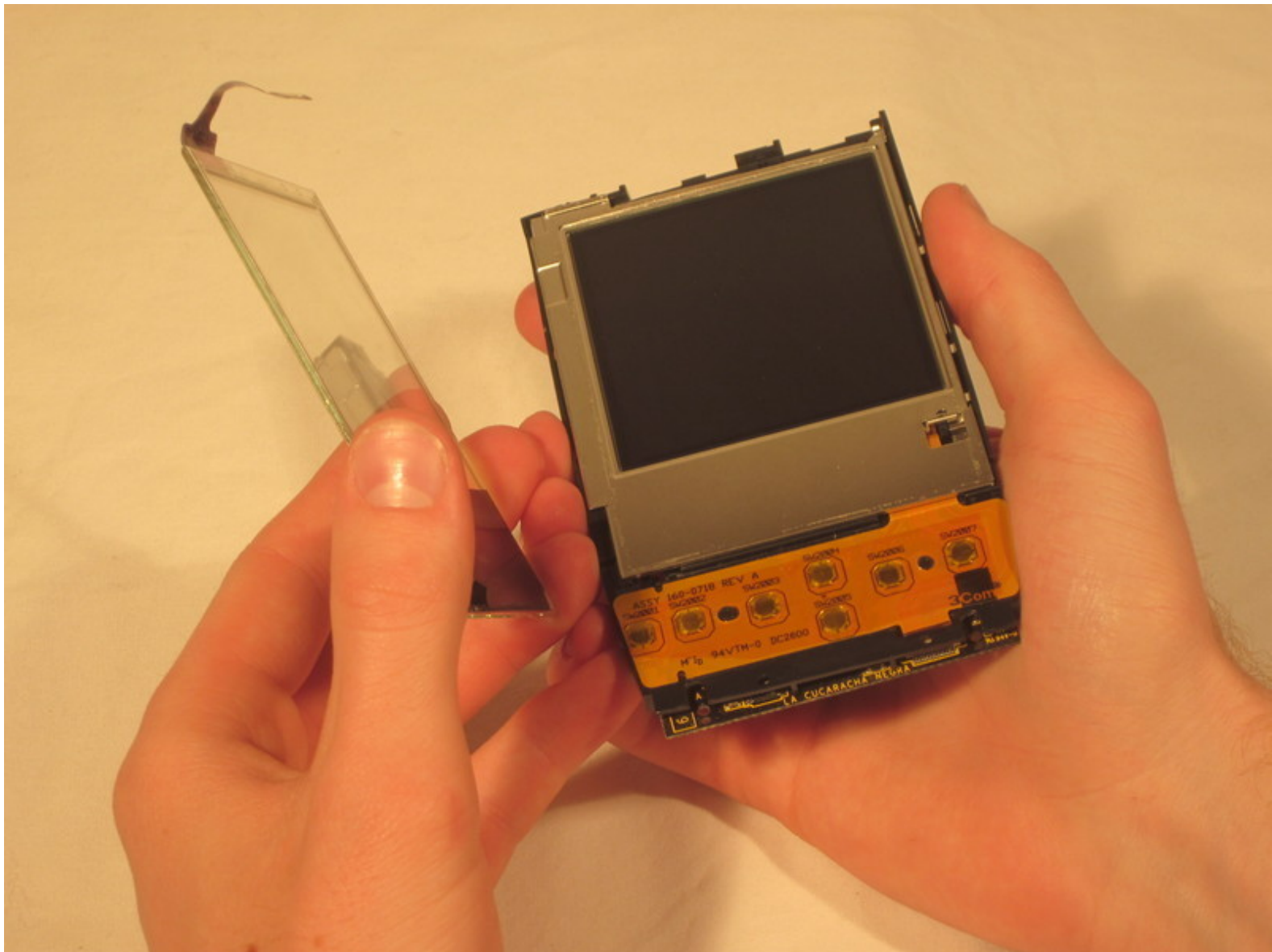




How to Reassemble the Palm IIIc

These instructions will help you reassemble the Palm IIIc after tear down.

Written By: Angela Arthur

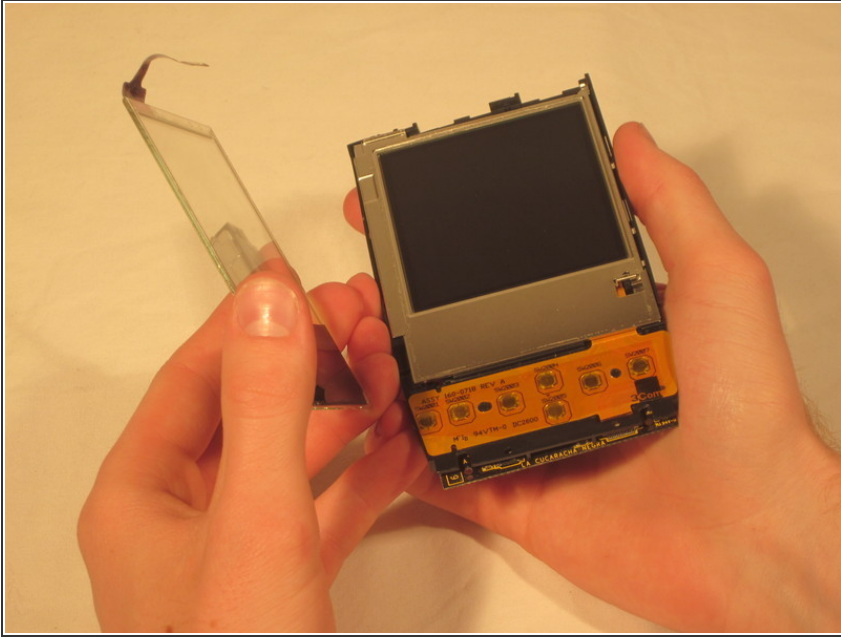




TOOLS:

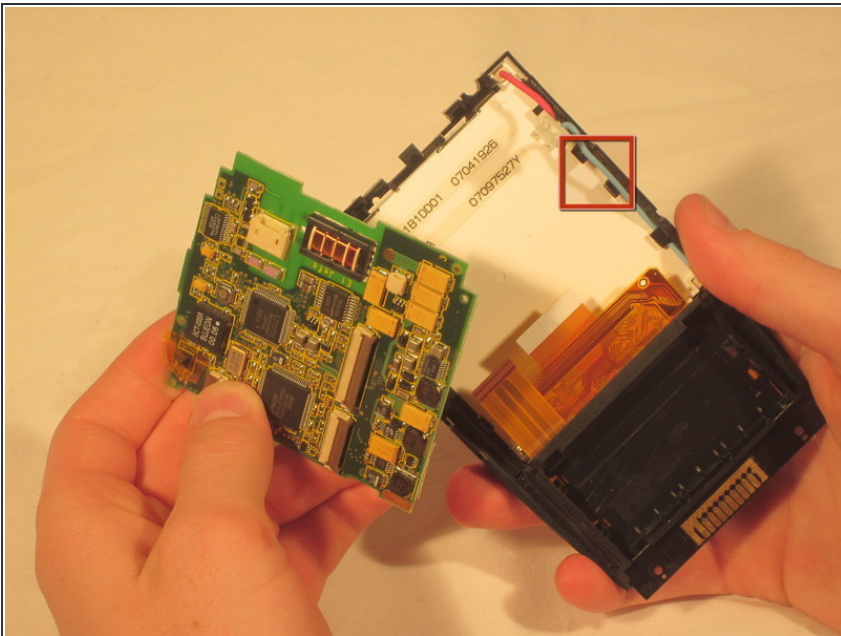
- [Phillips #00 Screwdriver](#) (1)
 - [Spudger](#) (1)
-

Step 1 — How to Reassemble the Palm IIIc



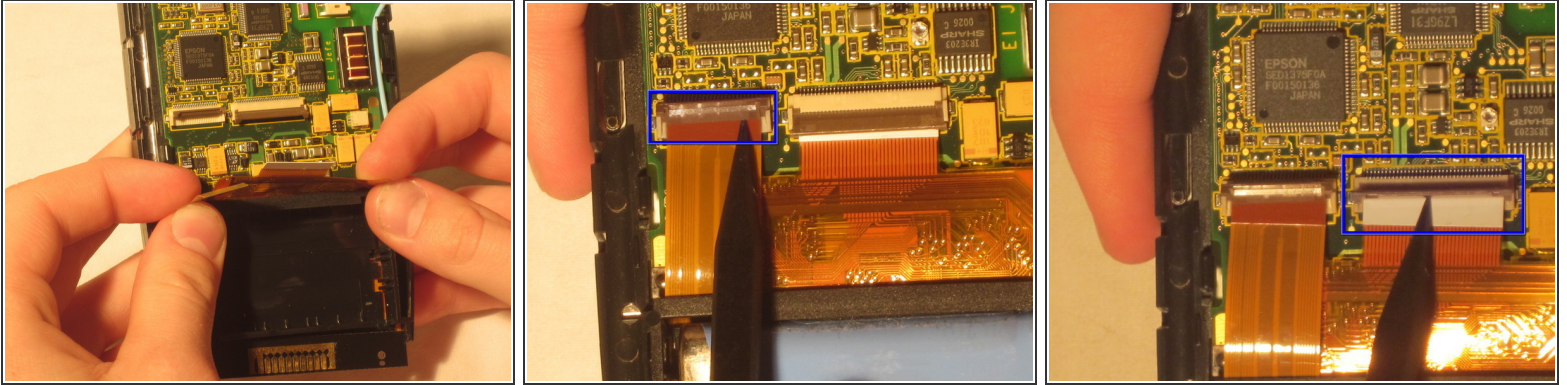
- Reinsert the screen into the case that contains the buttons.

Step 2



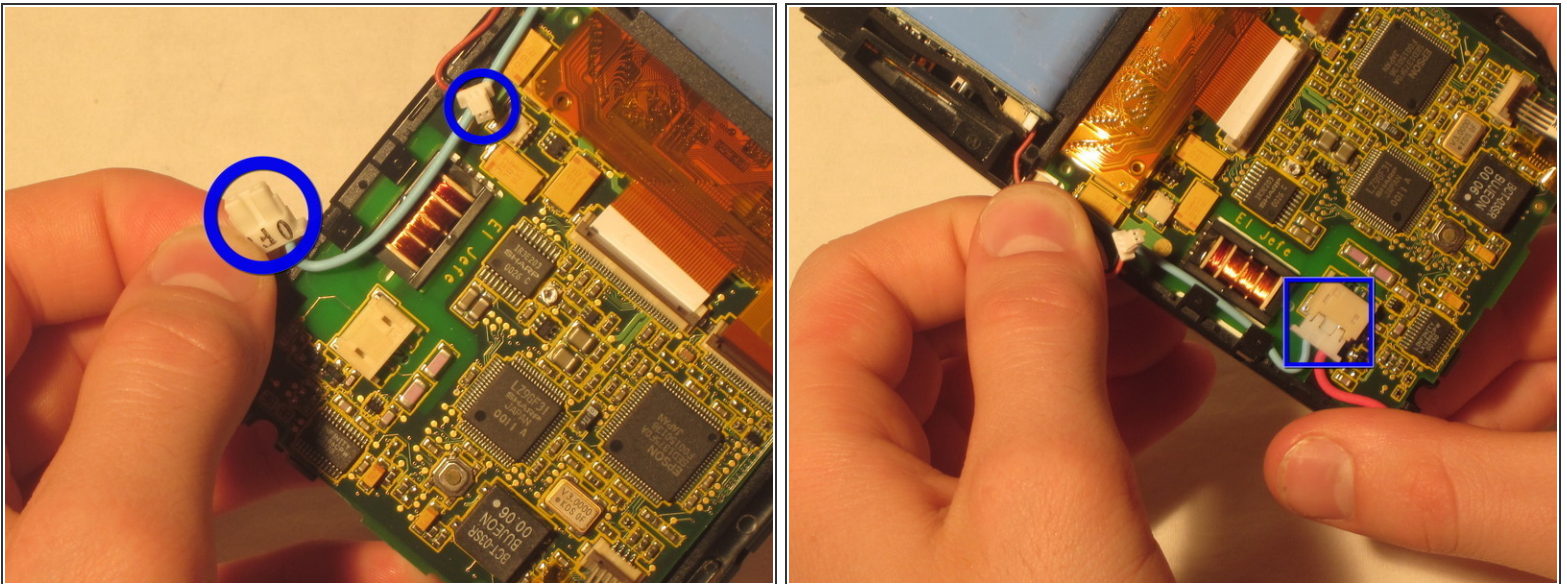
- Put the Motherboard back into casing from right to left.
- Make sure the black clips are securing the motherboard into the casing.

Step 3



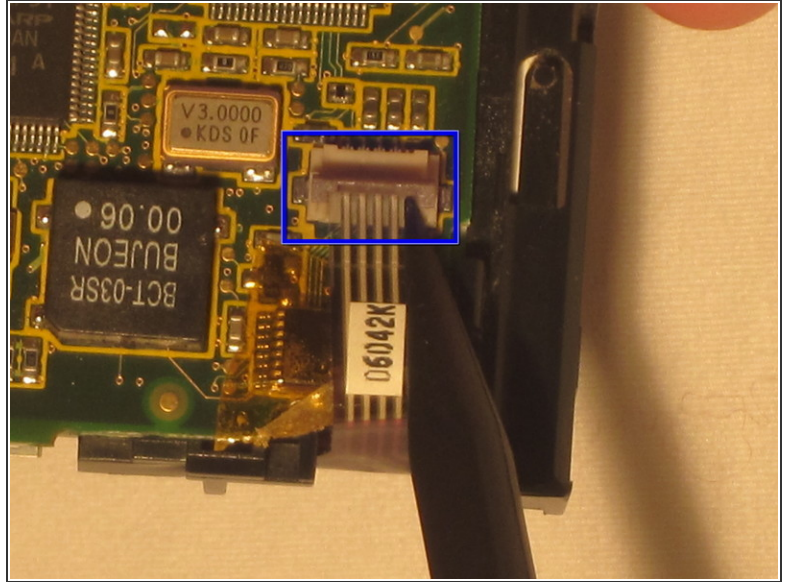
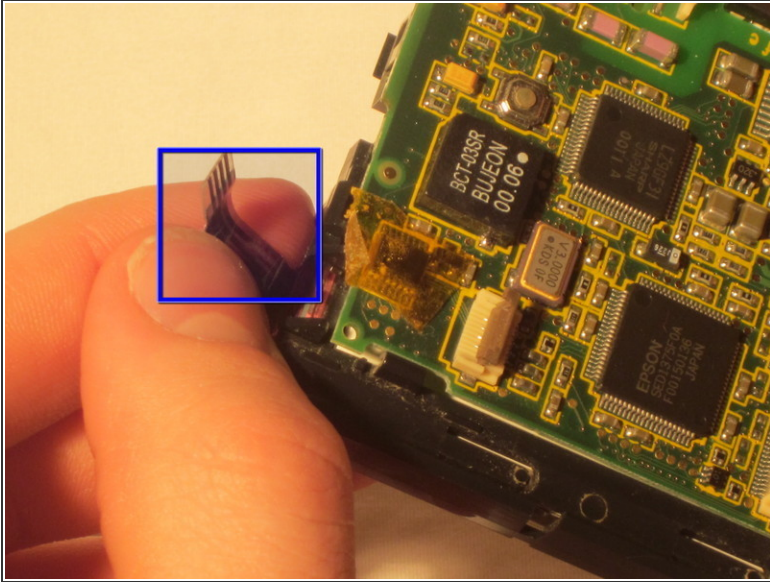
- Secure the bottom two ZIF connectors into their slots by opening the flap and inserting the ZIF connectors.
- Gently press down on the flap to secure the ZIF connector. This secures the screen and buttons to the motherboard.

Step 4



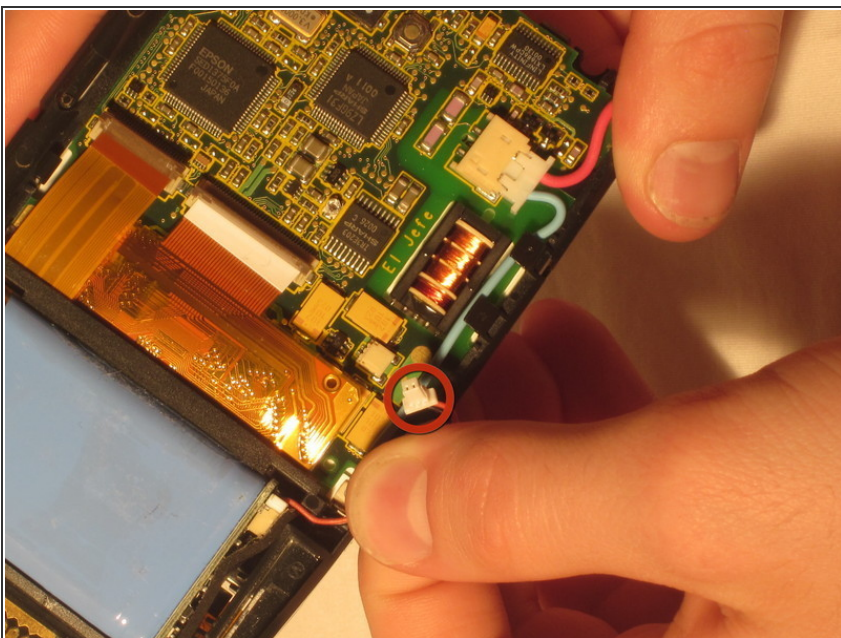
- Connect the blue and red screen cables to the beige box they were removed from.

Step 5



- Open the ZIF connector box at the top of the motherboard by gently pulling up on the flap.
- Insert the ZIF tab into the connector box.
- Gently press down on the flap to secure the ZIF tab in place.

Step 6



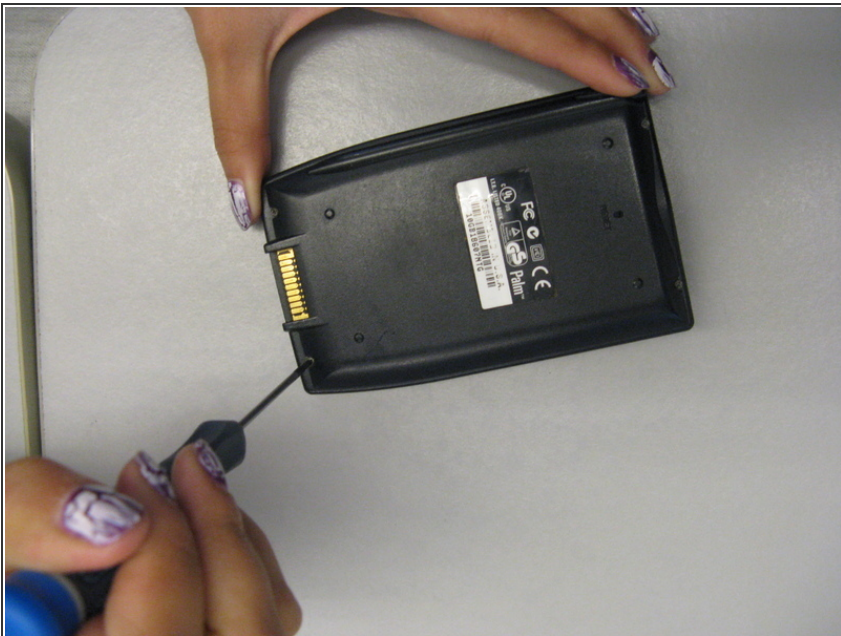
- Attach the white box on the end of the red cable connected to the battery into the connector box on the motherboard.

Step 7



- Place the front and back covers around the casing containing the motherboard and screen.
- Before securing the covers, place the sensor in between the front and back cover at the top of the device.
- After the sensor is in place between the two covers, firmly secure the front and back covers.

Step 8



- Replace the long screws at the top of the back case with the Philips head screwdriver.
- Replace the short screws to the bottom of the back case using the Philips head screwdriver.
- After the screws are in place, insert the stylus.

Step 9



- Gently snap the flip cover back into place where it connects at the top of the Palm IIIc

This document was last generated on 2017-07-18 06:34:38 PM.