



# Palm IIIc Button Pad Replacement

Before you can replace the parts you must open up the device and take out the old button pad and then you are free to install your new one by following the same procedure you followed to remove the old one

Written By: Paulina Trujillo



## INTRODUCTION

Follow this guide to learn how to replace your non-functioning button pad.

---



### TOOLS:

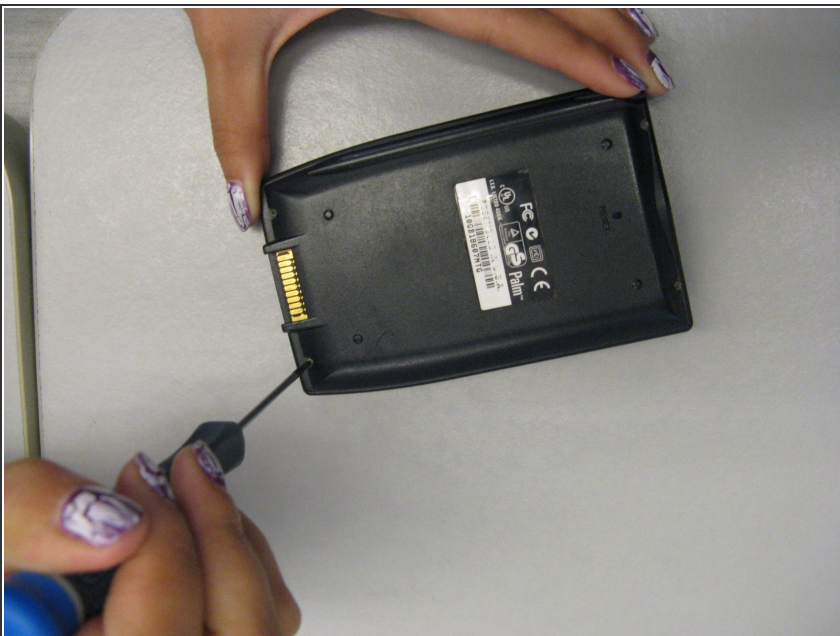
- [Phillips #00 Screwdriver](#) (1)
  - [Spudger](#) (1)  
*called "prying tool" in the guide*
-

## Step 1 — Removing broken LCD screen



- Keep track of all pieces removed from the device.
- Gently pull off the device cover. The cover snaps on and off easily where the cover attaches to the Palm IIIc device

## Step 2



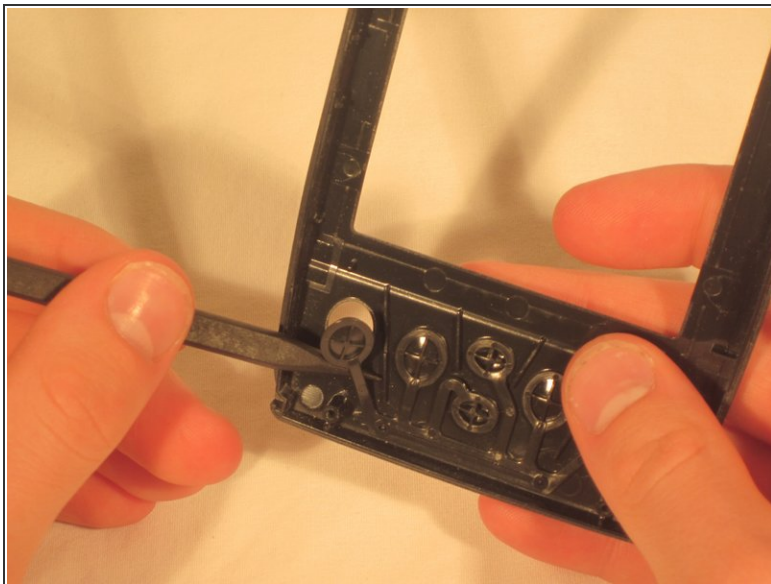
- Using a Phillips head screwdriver, take out the four screws on the back of the device. You may have to pull them out with your hands once they are unscrewed.
- ☑ There will be two long screws and two short screws. The long screws come from the top of the device, and the short screws come from the bottom of the device.

### Step 3 — Remove the Front Cover



- Lay Palm Ilc face-up and remove the front cover.
- ⓘ Do this firmly but not with too much force so as to not break or disturb anything you're not supposed to.

### Step 4 — Button Pad



- Using a prying tool, carefully pop button pad out of the cover.

## Step 5



- Insert the new button pad where the old one used to be.

---

To reassemble your device, follow these instructions in reverse order.

This document was last generated on 2019-01-15 06:00:55 AM.